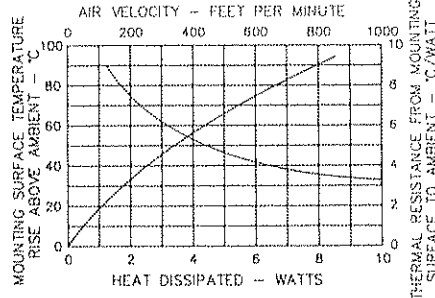
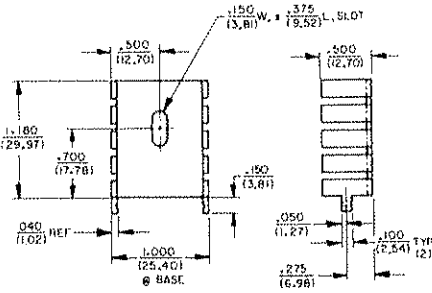


# Plastic Power Heat Sinks

**6230**

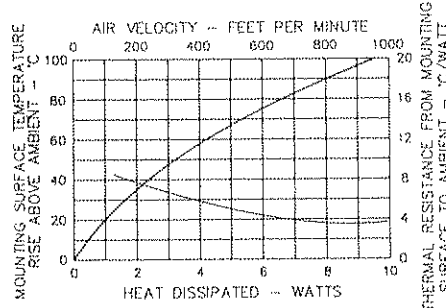
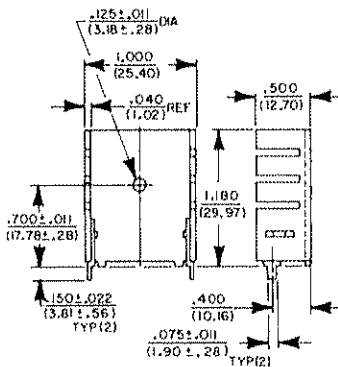


- Vertical mount heat sink for TO-220.
- Integral, scored mounting tabs are centered on bottom fins for added stability.

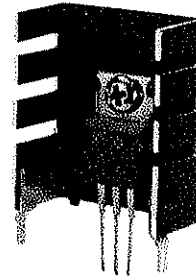


Model	Weight (lbs./grams)
6230B	.0069 (3.13)
6230B-TT	.0200 (9.07)
6230D	.0200 (9.07)

**6021**

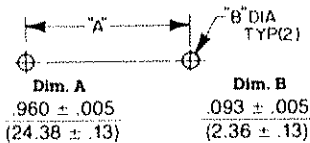


- Stake-on, solderable tab heat sink for TO-220.
- Low cost alternative to tinned-tab version.



Note: Tolerances ± .017 (.43) unless otherwise specified.

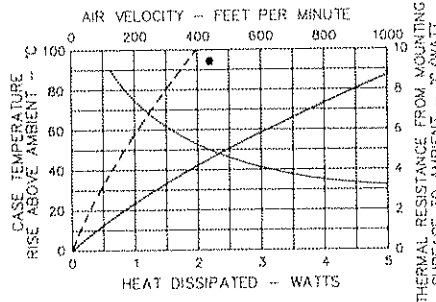
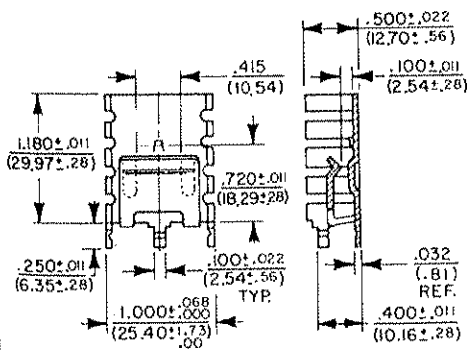
**Recommended Hole Pattern**



Model	Weight (lbs./grams)
6021PB	.0093 (4.22)

U.S. Patent No. D260,388

**6038**



- Vertical mount, clip-on heat sink for TO-220.
- Labor-saving — eliminates hardware.
- Tabs can be bent for mounting or the tinned-tab version soldered directly to the board.



Model	Weight (lbs./grams)
6038B	.0077 (3.49)
6038PB	.0077 (3.49)
6038B-TT	.0077 (3.49)

U.S. Patent No. 4,054,901