

NOTES:

1.0 ELECTRICAL SPECIFICATIONS:

1.1 FREQUENCY RANGE: DC to 8.0 GHz.

1.2 MAXIMUM INPUT POWER:

2 WATTS AT +25°C

1 WATT AT +125°C

1.3 MAXIMUM VSWR:

DC to 4 GHz: 1.05:1

4 to 8.0 GHz: 1.10:1

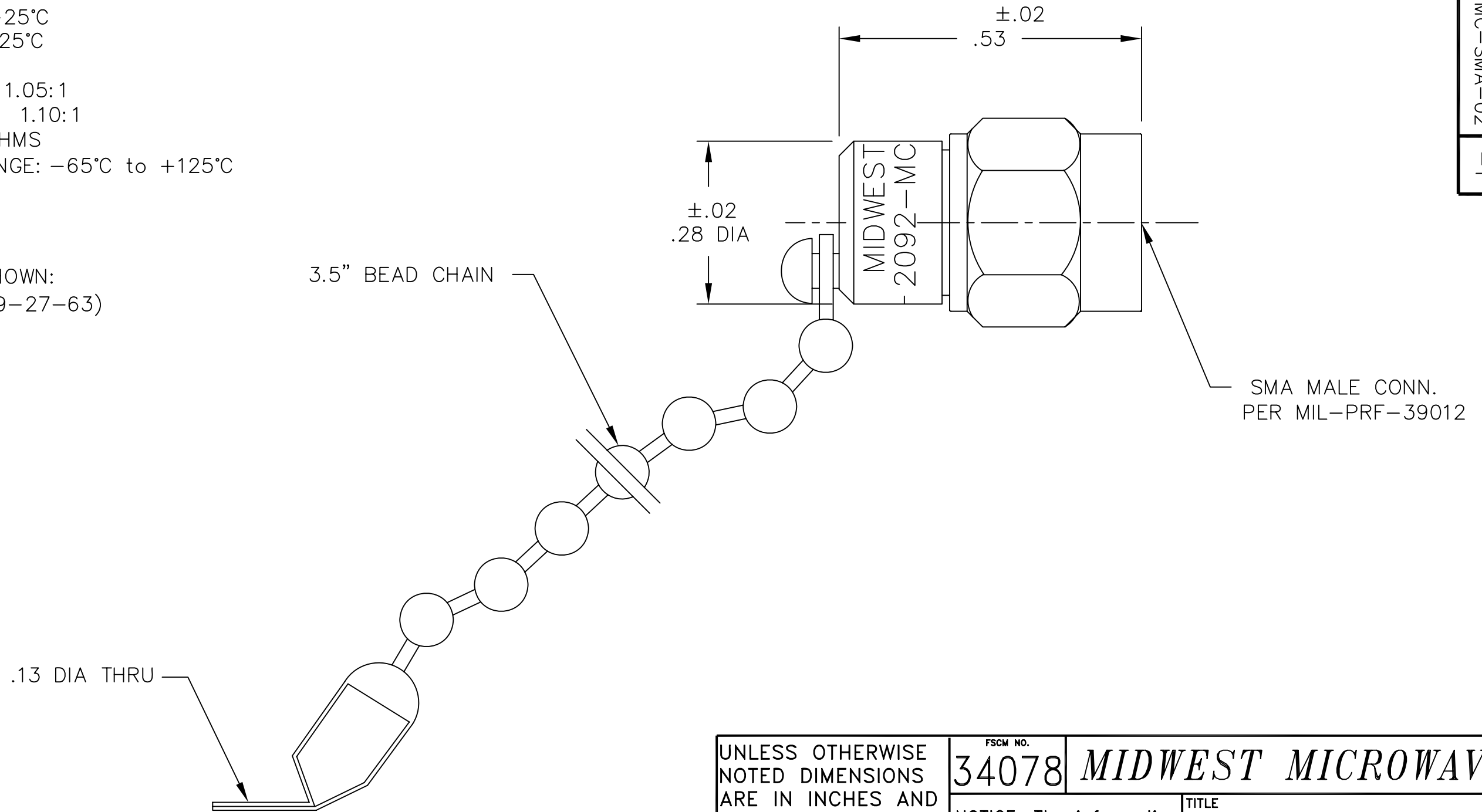
1.4 IMPEDANCE: 50 OHMS

1.5 TEMPERATURE RANGE: -65°C to +125°C

2.0 MARKING:

2.1 MARK UNIT AS SHOWN:

(REF: INK-2639-27-63)



MODEL NUMBER  
TRM-2092-MC-SMA-02  
REV.  
-1

REV.	DESCRIPTION	DATE
-	RELEASED	8/14/95
-1	ADDED TITLEBLOCK	10/31/05

UNLESS OTHERWISE NOTED DIMENSIONS ARE IN INCHES AND TOLERANCES ARE:  3 PLACE DECIMALS ±.005 2 PLACE DECIMALS ±.02 FRACTIONS ±1/64 PARALLELITY: T.I.R. _____ FLATNESS: T.I.R. _____ CONCENTRICITY: T.I.R. _____ ANGLES AND PERPENDICULARITY: ±1°	FSCM NO. <b>34078</b>	<b>MIDWEST MICROWAVE</b>	
	NOTICE: The information contained in this drawing is proprietary and must not be used without the permission of Midwest Microwave	TITLE <b>2 WATT TERMINATION</b>	
	DRAWN/DATE M.STAFFORD 8/11/95	ENG./DATE C.BONK 8/14/95	DRAWING NUMBER TRM-2092-MC-SMA-02
	CHECKED/DATE A.BEATTY 8/14/95	APPROVED/DATE	SCALE: 5=1 SHEET 1 of 1