

Amphenol

NEW

New from Amphenol PCD - Luminus Series

Small. Powerful. Connector.



- More Pin Counts

- Stamped & Formed Contacts

- More Accessories

See back page for details...

The Luminus Series are small, cost-effective connectors that are highly reliable and simple to use. With multiple product options to choose from, they meet MIL-T-81714, accept AS39029 & Stamped & Formed contacts, and are environmentally-sealed. Ideal for where space is limited, these innovative connectors feature a locking mechanism that ensures stability, and are suitable for blind-mating.

Other High Performance Products

Benefits at a Glance

MIL-T-81714

Developed to meet MIL-T-81714 requirements.

Multiple Keying Positions

Ensures proper connectivity.

Quick, Simple Connection

Makes wire installation and maintenance easy and efficient.

Multiple Configurations and Accessories

Flexible product options.

Interfacial and Triple-Barrier Seal

Enables environmental sealing.

Durability

Rugged polyamide housings; 100 mating cycles.

AS39029 Contacts

Accepts standard AS39029 contacts (MIL-C-39029).

Blind-Mate Connection

Polarization feature enables simple, blind mating.

Stamped & Formed Contacts

For applications where Mil-Spec contacts are not necessary.



Quick Mount Relay Sockets

- Quick and easy installation
- No hardware; Reduces FOD
- Lightweight



High Performance P-Clamps

- PEEK polymer
- Non-corrosive
- Non-conductive
- Overmolded silicone cushions
- Lightweight



(Actual Size of 8-Pin, Size 22)

Contact us for more information.



TECHNICAL SPECIFICATIONS

MATERIALS	
Insulator Body	Polyamide 6/6 (Nylon)
Grommet	Silicone Rubber
Contact Retainer	Stainless Steel
PERFORMANCE	
Temp Range	- 65°C to + 125°C
Insulation Resistance	5000 Megaohms Min. @ 500 VDC
Dielectric Withstanding	1000 VRMS, 60 Hz @ Sea Level
	300 VRMS, 60 Hz @ 50,000 ft.
Current Ratings	Size 16: 13 Amps Size 20: 7.5 Amps Size 22: 5 Amps
Durability	100 Mating Cycles
Temp Cycling	5 (1) Hour Cycles: - 65°C to + 125°C
Shock	100G Sawtooth, 6MS
Vibration	10-2000 Hz, 15G Peak
Salt Spray	5% Salt Spray @ 95°F for 48 Hours
Humidity	10 Days @ 25°C to 65°C, 80-90% RH

TERMINATION ACCESSORIES

Wire Size	Crimp Tool		Installation/ Removal Tool
	Basic Tool	Positioner	
12	M22520/1-01	M22520/1-04	M81969/14-04
16	M22520/1-01	M22520/1-04	M81969/14-03
20	M22520/1-01	M22520/1-04	M81969/14-02
22D	M22520/2-01	M22520/2-09 (P) M22520/2-07 (S)	M81969/14-01



Plug Specifications

Pin Count	Contact Size	Part No. W/ Contacts	Part No. W/O Contacts	L(in)	D(in)	Mated Length (in)	Weight (oz)	Key	Color	Cradle	Mating Half W/ Contacts	Mating Half W/O Contacts	Shell Size	Contact part number
2-Pin	22D	SJS830251	SJS830250	0.767	0.392	1.260	0.053	N/A	Black	N/A	SJS830271	SJS830270	5	M39029/57-354; socket
3-Pin	16	SJS840311	SJS840310	0.784	0.602	1.270	0.092	N/A	White	SJS445000	SJS840301 SJS840321	SJS840300 SJS840320	8	M39029/57-358; socket
		SJS840341	SJS840340	0.784	0.602	1.260	0.092	ALT	Black	SJS445000	SJS840331 SJS840351	SJS840330 SJS840350	8	
	22D	SJS830211	SJS830210	0.779	0.392	1.270	0.053	N/A	Black	N/A	SJS830231	SJS830230	5	M39029/57-354; socket
4-Pin	16	SJS840411	SJS840410	0.784	0.602	1.270	0.095	N/A	White	SJS445000	SJS840401	SJS840400	8	M39029/57-358; socket
5-Pin	22D	SJS860511	SJS860510	0.742	0.602	1.270	0.092	N/A	White	SJS445000	SJS860501 SJS860521	SJS860500 SJS860520	8	M39029/57-354; socket
		SJS870511	SJS870510	0.742	0.602	1.270	0.088	N/A	N/A	SJS870521	SJS870520	8	M39029/58-360; pin	
8-Pin	22D	SJS831100	SJS830100	0.757	0.524	1.260	0.061	A	Black	SJS883000	SJS831200 SJS831220	SJS830200	7	M39029/57-354; socket
		SJS831101	SJS830101	0.757	0.524	1.260	0.061	B	Green		SJS831201 SJS831221	SJS830201 SJS830221	7	
		SJS831102	SJS830102	0.757	0.524	1.260	0.061	C	Yellow		SJS831202 SJS831222	SJS830202 SJS830222	7	
9-Pin	(4) 16, (5) 22D	SJS860911	SJS860910	0.741	0.714	1.270	0.116	N/A	White	SJS991000	SJS860901	SJS860900	10	M39029/57-354; -358; socket
9-Pin	(8) 22D, (1) 16	SJS860101	SJS860100	0.819	0.544	1.270	0.091	N/A	White	SJS445000	SJS860201	SJS860200	8	M39029/57-354; -358; socket
10-Pin	(4) 16, (6) 22D	SJS861101	SJS861100	0.741	0.714	1.260	0.116	N/A	White	SJS991000	SJS861201	SJS861200	10	M39029/57-354; -358; socket
12-Pin	22D	SJS861301	SJS861300	0.742	0.602	1.270	0.084	N/A	White	SJS445000	SJS861401	SJS861400	8	M39029/57-354; socket

Receptacle Specifications

Pin Count	Contact Size	Part No. W/ Contacts	Part No. W/O Contacts	L(in)	D(in)	Mated Length (in)	Weight (oz)	Key	Color	Cradle	Mating Half W/ Contacts	Mating Half W/O Contacts	Shell Size	Contact part number
2-Pin	22D	SJS830271	SJS830270	0.740	0.318	1.260	0.039	N/A	Black	N/A	SJS830251	SJS830250	5	M39029/58-360; pin
3-Pin	16	SJS840301	SJS840300	0.755	0.550	1.270	0.067	N/A	White	SJS445000	SJS840311	SJS840310	8	M39029/58-364; pin
		SJS840351	SJS840350	0.755	0.550	1.270	0.067	ALT	Black		SJS840341	SJS840340	8	
		SJS840321	SJS840320	0.755	0.520	1.270	0.116	N/A	White	N/A	SJS840311	SJS840310	8	
		SJS840331	SJS840330	0.755	0.520	1.270	0.116	ALT	Black	N/A	SJS840341	SJS840340	8	
	22D	SJS830231	SJS830230	0.755	0.318	1.260	0.039	N/A	Black	N/A	SJS830211	SJS830210	5	M39029/58-360; pin
4-Pin	16	SJS840401	SJS840400	0.755	0.550	1.270	0.067	N/A	White	SJS445000	SJS840411	SJS840410	8	M39029/58-364; pin
5-Pin	22D	SJS860501	SJS860500	0.755	0.550	1.270	0.088	N/A	White	SJS445000	SJS860511	SJS860510	8	M39029/58-360; pin
		SJS860521	SJS860520	0.755	0.520	1.270	0.127	N/A			N/A	SJS860511	SJS860510	
		SJS870521	SJS870520	0.744	0.528	1.270	0.134	N/A			N/A	SJS870511	SJS870510	8
8-Pin	22D	SJS831200	SJS830200	0.768	0.448	1.260	0.048	A	Black	SJS883000	SJS831100	SJS830100	7	M39029/58-360; pin
		SJS831201	SJS830201	0.768	0.448	1.260	0.048	B	Green		SJS831101	SJS830101	7	
		SJS831202	SJS830202	0.768	0.448	1.260	0.048	C	Yellow		SJS831102	SJS830102	7	
		SJS831220	SJS830220	0.768	0.448	1.270	0.089	A	Black	N/A	SJS830110	SJS830100	7	
		SJS831221	SJS830221	0.768	0.448	1.270	0.089	B	Green		SJS830111	SJS830101	7	
		SJS831222	SJS830222	0.768	0.448	1.270	0.089	C	Yellow		SJS830112	SJS830102	7	
9-Pin	(4) 16, (5) 22D	SJS860901	SJS860900	0.755	0.651	1.270	0.113	N/A	White	SJS991000	SJS860911	SJS860910	10	M39029/58-360; -364; pin
9-Pin	(8) 22D, (1) 16	SJS860201	SJS860200	0.832	0.550	1.270	0.067	N/A	White	SJS445000	SJS860101	SJS860100	8	M39029/58-360; -364; pin
10-Pin	(4) 16, (6) 22D	SJS861201	SJS861200	0.755	0.651	1.260	0.112	N/A	White	SJS991000	SJS861101	SJS861100	10	M39029/58-360; -364; pin
12-Pin	22D	SJS861401	SJS861400	0.755	0.550	1.270	0.081	N/A	White	SJS445000	SJS861301	SJS861300	8	M39029/58-360; pin

Cradle Specifications

Part No.	Length (in)	Weight (oz)	Height (in)	Color	For Shell Size
SJS445000	1.031	0.095	0.701	White	8
SJS883000	1.031	0.099	0.701	Black	7
SJS991000	1.031	0.099	0.846	White	10

Push & Pull

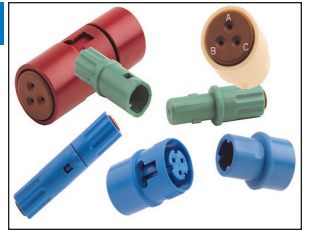
Product Description

1-Pin:

Developed to meet MIL-T-81714 criteria and available in two colors per size, these products feature an environmental sealing that meets EIA-364D-03B to 12,000 ft. Altitude Immersion Test standard. Mating and releasing the plug and receptacle is made simple to do. Simply push the part together to mate and lock, and "twist and pull" to release.

3-Pin:

Developed to meet MIL-T-81714 criteria and available in three colors, these products feature molded-in polarizing keys to enable blind-mate connections. Simply push the part together to mate and lock, and "squeeze and pull" to release.

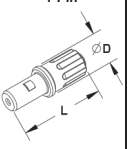
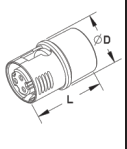


TECHNICAL SPECIFICATIONS

MATERIALS

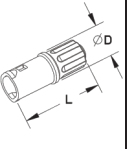
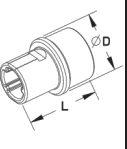
Insulator Body	Polyamide 6/6 (Nylon)
Grommet	Silicone Rubber
Contact Retainer	Stainless Steel
PERFORMANCE	
Temperature Range	- 65°C to + 125°C
Insulation Resistance	> 5000 Megaohms Min.
Dielectric Withstanding	1500Vrms @ Sea Level
Current Ratings	Size 12: 23 Amps Size 16: 13 Amps Size 20: 7.5 Amps
Sealing	Size 16 & 20: EIA-364-03B (12,000 Ft.) Size 12: EIA-364-D, Method 3
Vibration	Size 16 & 20: EIA-364-28D (Test Condition V, E) Size 12: EIA-364-D (Method 28, Test Condition V)
Flammability	UL94, V0.
CTI Rating	UL746B, 600V
Contact Retention	Size 16 & 20: EIA-364-29B (20 lb) Size 12: 30 lbs

Plug Specifications

Pin Count	Contact Size	Part No. W/ Contacts	Part No. W/O Contacts	Length (in)	Diameter (in)	Mated Length (in)	Weight (oz)	Key	Color	Mating Half W/ Contacts	Mating Half W/O Contacts	Shell Size	Contact Part No.
1-Pin 	12	SJS512101	SJS512100	1.209	0.449	1.780	0.077	N/A	Blue	SJS512201	SJS512200	7	M39029/56-353; socket
		Red	SJS512211						SJS512210	7			
	16	SJS716101	SJS716100	1.110	0.390	1.701	0.049	N/A	Blue	SJS716201	SJS716200	6	M39029/56-352; socket
		Red	SJS716211						SJS716210	6			
	20	SJS720101	SJS720100	1.079	0.701	1.681	0.152	N/A	Green	SJS720201	SJS720200	6	M39029/56-351; socket
		Yellow	SJS720211						SJS720210	6			
3-Pin 	16	SJS816101	SJS816100	1.118	0.701	1.614	0.187	N/A	A Red	SJS816201	SJS816200	11	M39029/56-352; socket
		B White	SJS816211						SJS816210	11			
		C Blue	SJS816221						SJS816220	11			
	20	SJS820101	SJS820100	1.079	0.701	1.681	0.152	N/A	A Red	SJS820201	SJS820200	8	M39029/56-351; socket
		B White	SJS820211						SJS820210	8			
		C Blue	SJS820221						SJS820220	8			

* Shell size: see back page

Receptacle Specifications

Pin Count	Contact Size	Part No. W/ Contacts	Part No. W/O Contacts	Length (in)	Diameter (in)	Mated Length (in)	Weight (oz)	Key	Color	Mating Half W/ Contacts	Mating Half W/O Contacts	Shell Size	Contact Part No.
1-Pin 	12	SJS512201	SJS512200	1.118	0.488	1.780	0.063	N/A	Blue	SJS512101	SJS512100	7	M39029/58-365; pin
		Red	SJS512111						SJS512110	7			
	16	SJS716201	SJS716200	1.059	0.429	1.654	0.053	N/A	Blue	SJS716101	SJS716100	6	M39029/58-364; pin
		Red	SJS716111						SJS716110	6			
	20	SJS720201	SJS720200	1.028	0.390	1.701	0.042	N/A	Green	SJS720101	SJS720100	6	M39029/58-363; pin
		Yellow	SJS720111						SJS720110	6			
3-Pin 	16	SJS816201	SJS816200	1.028	0.701	1.614	0.162	N/A	A Red	SJS816101	SJS816100	11	M39029/58-364; pin
		B White	SJS816111						SJS816110	11			
		C Blue	SJS816121						SJS816120	11			
	20	SJS820101	SJS820100	0.988	0.701	1.681	0.131	N/A	A Red	SJS820101	SJS820100	8	M39029/58-363; pin
		B White	SJS820111						SJS820110	8			
		C Blue	SJS820121						SJS820120	8			

* Shell size: see back page

TERMINATION ACCESSORIES

Wire Size	Crimp Tool		Installation/ Removal Tool
	Basic Tool	Positioner	
12	M22520/1-01	M22520/1-04	M81969/14-04
16	M22520/1-01	M22520/1-04	M81969/14-03
20	M22520/1-01	M22520/1-04	M81969/14-02



Stamped and Formed Contacts

Other Products from Amphenol PCD



For applications where Mil-Spec contacts are not necessary, Amphenol Pcd now offers less expensive Stamped and Formed contacts in size 16 and 20.

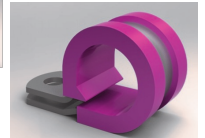
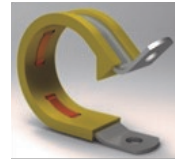
- Size 16 contacts are comparable with M39029/56-352 (socket); M39029/58-364 (pin)
- Size 22 contacts are comparable with M39029/57-354 (socket); M39029/58-360 (pin)

Others sizes coming soon.



APeX Circular Galley Connector

- Intermateable/Interchangeable
- Blind-mate connection
- Crimp termination; 3 power, 3 control



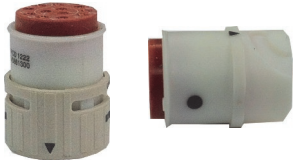
New P-Clamps

- PCL01 Metal P-Clamps
- PCL03 Grounding P-Clamps
- Contact for more information

3 New Pin Counts

9-Pin

- 1 Size 16, 8 Size 22 contacts
- Shell Size: 8



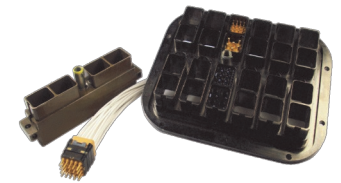
10-Pin

- 4 Size 16, 6 Size 22 contacts
- Shell Size: 10



12-Pin

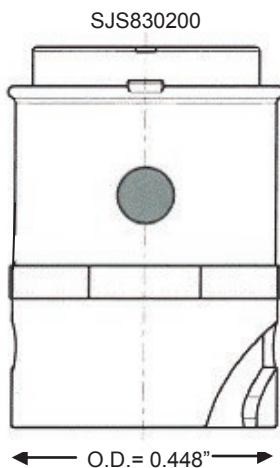
- Size 22 Contacts
- Shell Size: 8



SIMPLUS

- Standard and custom configurations
- Easy to install
- Interchangeable modules
- Polarized (A, B, C, D, N)

Shell Size Designation



Shell Sizes: determined by the overall diameter (O.D.) of the receptacle in 16ths of an inch.

Example: SJS830100/SJS830200

O.D. of receptacle SJS830200 at mating interface is 0.448."

$$\begin{aligned} \text{Shell Size} &= (\text{O.D.}) / (1/16") \\ &= (0.448") / (1/16") \\ &= 7.168 \\ &= 7 \end{aligned}$$

Round the closest whole number to designate the mated pair as Shell Size 7.

Amphenol PCD Headquarters

72 Cherry Hill Drive
Beverly, MA 01915 USA
info@luminuspcd.com
978-624-3400

Amphenol

CONNECTING PEOPLE + TECHNOLOGY

August, 2012