

THIS DRAWING IS UNPUBLISHED. RELEASED FOR PUBLICATION. BY TYCO ELECTRONICS CORPORATION. ALL RIGHTS RESERVED.

ATLANTIC VERSION TERMINATOR INTERFACE ADAPTER	PART NUMBER	REVISION	DESCRIPTION	FEED TYPE	CONVERT TO	PART NUMBERS REQUIRED					
	2266202-1	A	FINE CRIMP HEIGHT ADJUST	MECHANICAL	PNEUMATIC FEED	2119950-1	1338685-1	5-18022-5	2119641-1	2119799-1	2063440-1
	2266202-2	A	FINE CRIMP HEIGHT ADJUST	PNEUMATIC	SERVO LATCH PLATE	2119951-1	-	8-2266202-5	1901094-3	-	2168400-6 (QUANTITY 2)
					SMART APPLICATOR	2161326-1	-	8-2266202-4	-	-	
					MECHANICAL FEED	2119949-1	1338685-1	5-18022-5	2119653-1	-	-
	2266202-5	A	FINE CRIMP HEIGHT ADJUST	SERVO LATCH PLATE	SERVO LATCH PLATE	2119951-1	-	8-2266202-5	1901094-3	-	2168400-6 (QUANTITY 2)
					SMART APPLICATOR	2161326-1	-	8-2266202-4	-	-	
					MECHANICAL FEED	2119949-1	1338685-1	5-18022-5	2119653-1	-	-
2266202-6	A	NON-CRIMP HEIGHT ADJUST	SERVO LATCH PLATE	PNEUMATIC FEED	2119950-1	1338685-1	5-18022-5	2119641-1	2119799-1	2063440-1	
				-	-	-	-	-	-	-	
2266202-7	A	FINE CRIMP HEIGHT ADJUST	NONE	-	-	-	-	-	-	-	
7-2266202-7	A	CRIMP TOOLING KIT	-	-	-	-	-	-	-	-	

APPLICATOR DATA		
CRIMP	SIZE	TYPE
WIRE	1.40 mm [.055]	F
INSUL	3.05 mm [.120]	O

APPLICATOR INSTRUCTIONS 408-10389

TERMINAL DATA: FORD & SUMITOMO TERMINAL TE CRIMP SPECIFICATION	
TERMINAL NAME: TRMNL WIR SNP ON FEM	
WIRE STRIP LENGTH 4.95-5.71 mm [.195-.225 IN]	INSULATION DIAMETER RANGE 2.60mm MAX [.102 IN MAX]
TERMINAL APPLICATION SPECIFICATION	NONE

TE TERMINAL	FORD TERMINAL	TE SEAL	FORD SEAL	CABLE DIAMETER
2113423-1	FORD EU5T-14474-FAA	2113424-1	FORD AU5T-14603-EA	1.40-1.90mm
2113423-2	FORD EU5T-14474-DAA	2113424-2	FCI 5420039I	
2113423-3	SUMITOMO 9988-4690	2113424-3	OSR A-0131	
2113423-4	SUMITOMO 9988-4688			
2113423-5	SUMITOMO 8240-0511			

WIRE SIZE	CRIMP HEIGHT mm [INCH]	CRIMP HEIGHT REFERENCE SETTING
20 AWG	1.19+/-0.05 [.047+/-0.002]	6.2
22 AWG	1.09+/-0.05 [.043+/-0.002]	7.3

- RECOMMENDED SPARE PARTS
- GREASE BEARING SURFACES LIGHTLY
- 3. LUBRICATE DAILY PER THE APPLICATOR INSTRUCTION SHEET SUPPLIED WITH THE APPLICATOR.
- APPLICATOR SPECIFIC DATA TO BE ENTERED INTO BLANK MEMORY CHIP AT ASSEMBLY. SEE BELOW FOR PART NUMBER:
 MECHANICAL FEED WITH "SMART APPLICATOR" CONVERSION: 8-2266202-4
 PNEUMATIC FEED WITH "SMART APPLICATOR" CONVERSION: 8-2266202-4
 SERVO FEED WITH "FINE CRIMP HEIGHT ADJUST": 8-2266202-5
 SERVO FEED WITH "NON-CRIMP HEIGHT ADJUST": 8-2266202-6
- 5. ADJUSTMENT OF THE STRIPPER MAY BE REQUIRED WHEN MOVING THE APPLICATOR BETWEEN BENCH AND LEADMAKER APPLICATIONS.
- APPLY PART NUMBER 1-23419-5 LOCTITE TO THREADS OF ITEMS 62. APPLY PART NUMBER 2-23419-6 LOCTITE TO THREADS OF ITEMS 242. FOR -6 ONLY APPLY PART NUMBER 1-23419-5 LOCTITE TO THREADS OF ITEM 37.
- GREASE THREADS, GROOVE AND O-RING ON ITEMS 35 & 252.
- MAGNET, ITEM 166 MUST BE ORIENTED CORRECTLY IN ORDER TO PROPERLY ACTUATE THE COUNTER.
- CRIMP HEIGHT REFERENCE SETTING WAS THE SETTING USED WHEN THE APPLICATOR WAS QUALIFIED AT THE FACTORY. ADJUSTMENT MAY BE NECESSARY WHEN RUNNING APPLICATOR IN THE FIELD.
- SPARE FEED CAM STORAGE LOCATION REFER TO INSTRUCTION SHEET FOR ADDITIONAL INFORMATION.
- TO CONVERT THE APPLICATOR TO A NON-CARRIER CUTTING STYLE, REMOVE ITEM 13 AND ATTACH TO THE LOCATION ON THE BACK SIDE OF THE HOUSING. REFER TO INSTRUCTION SHEET FOR ADDITIONAL INFORMATION.
- WHEN ASSEMBLING A NON CRIMP HEIGHT ADJUST APPLICATOR (-6) USE SHIMS FROM ITEM 260 TO ACHIEVE A NOMINAL SHIM HEIGHT OF 4.61. THIS APPLICATOR APPLIES TERMINAL WITH A SEAL.
- APPLY TORO-SEAL IN ALLEN SOCKET TO FILL HOLE AFTER FLAT HD HAS BEEN ADJUSTED TO CORRECT HEIGHT AT QUALIFICATION. APPLY #1-23419-5 LOC-TITE TO THREADS.

***WARNING**
 ON INSTALLATION, SET WIRE DISC, ITEM 40 TO LARGEST WIRE SIZE SETTING. USE OF SETTINGS BELOW MINIMUM REQUIRED CRIMP HEIGHT SETTING WILL CAUSE DAMAGE TO CRIMP TOOLING.

-77	-7	-6	-5	-2	-1	PART NO	DESCRIPTION	ITEM NO
-	-	1	-	-	-	2119957-2	APPLICATOR SHIM PACK	260
-	1	-	1	1	1	8-21084-0	O-RING, .676 ID, .070 DIA. MAT.	252
-	-	-	-	1	-	2119640-1	PUSH ROD, AIR FEED	250
-	-	-	-	1	-	2079988-1	BUSHING, LCH5-12, MISUMI	249
-	-	-	-	1	-	2119641-1	FEED CAM, AIR FEED	248
-	1	-	1	1	1	2119798-1	DETENT PIN	247
-	1	-	1	1	1	1-22279-3	SPRING, COMPRESSION	246
-	-	1	-	-	-	2119758-1	RAM, AMP STYLE, SIDE FEED, NON-ADJ.	245
-	1	1	1	1	1	2119082-9	CAM, SNAIL, INSULATION ADJUSTMENT	244
-	1	1	1	1	1	2079764-1	WASHER, WAVE SPRING, CREST-TO-CREST	243

ATLANTIC VERSION
 Shown on sheets 1 of 4 & 2 of 4
 (Pacific version shown on sheets 3 of 4 & 4 of 4)

LOC	DIST	REV	DATE	BY	CHK	APPD
A	66		24FEB2014	LG	TE	
A1			11APR2016	XZ	KZ	

REV	DATE	BY	CHK	APPD	DESCRIPTION	ITEM NO
6					RETAINER, INSULATION DIAL	242
					SCR, SKT HD CAP M3 X 4.0	241
					SHCS, LOW HEAD, RoHS, M5 X 16	240
					MECHANICAL FEED ASSEMBLY	239
					AIR FEED MODULE	238
					TAG, IDENTIFICATION	213
					SPACER, FEEDER	198
					RING, RETAIN, EXTERN, 3/16 CRESCENT	172
					MAGNET, RARE EARTH HIGH ENERGY	166
					COUNTER, MAGNETIC	164
					SPRING, FEED FINGER	163
					PIN, RETAIN, GRVD, 3/16 X .854	137
					HOLDER, FEED FINGER, AF	136
					MEMORY CHIP, PROGRAMMED	135
					SERVO FEED LATCH ASM	133
					FEED FINGER ASSEMBLY, SF	117
					SCR, SKT HD CAP, RoHS, M3 X 8.0	96
					FRONT STRIP GUIDE	95
					GUARD, FRONT CHIP	89
					SPACER, CRIMPER	82
					DOCUMENTATION PACKAGE	71
					TAG, IDENTIFICATION	67
					SCREW, DRIVE, RH, RoHS, 2 x .188	66
					LIMITER, ADJUSTMENT BOLT	63
					SCR, SET, SOC, CONE POINT, M3 X 4.0	62
					SCR, BHSC, RoHS (M4 X 8)	60
					SCR, HEX HD CAP, M4 X 6.0	59
					SCR, FLT SKT HD CAP M3 X 10.0	57
					FEED PAWL	56
					SHCS, LOW HEAD, RoHS, M4 X 12	54
					SCR, SKT HD CAP, RoHS, M4 X 10	53
					NUT, HEX, REG, RoHS, M3	52
					BUMPER, HOLD DOWN	51
					SPACER, TONKER	50
					SCR, SKT HD CAP M4 X 6.0	49
					FEED CAM, PRE FEED	48
					FEED CAM, POST FEED	47
					APPLICATOR BASIC ASSEMBLY, SF	46
					RAM, AMP STYLE, SIDE FEED	44
					SCR, BHSC, RoHS (M8 X 25)	41
					DISC, NUMBERED FA WIRE ADJUSTMENT	40
					APPLICATOR SHIM PACK	39
					RAM WASHER, PRECISION	38
					FA HEAD, ATLANTIC STYLE	37
					BOLT, ADJUSTMENT	35
					SUPPORT, TERMINAL	34
					SCR, BHSC, RoHS (M4 X 20)	33
					HEX HEAD, FLANGED, M5 X 8mm LONG	32
					SCR, SET, FLT POINT M5 X 20.0	31
					SPACER, STRIP GUIDE	30
					ASSEMBLY, STRIP GUIDE	29
					SPACER, CRIMPER	28
					SPRING, COMPRESSION	27
					LEVER, DRAG RELEASE	26
					DRAG, TERMINAL	25
					STRIP GUIDE	24
					SCR, SKT HD SHLDR 5.0 DIA X 6.0	23
					SCR, SKT HD CAP, RoHS, M4 X 8.0	21
					WASHER, FLAT, REG M4	20
					STRIPPER, SIDE FEED	19
					INSERT, SHEAR	13
					SPRING, COMPRESSION	12
					STOP, SHEAR	11
					SHEAR HOLDER, FRONT	10
					FLOATING SHEAR, FRONT	9
					ANVIL, COMBINATION	8
						7
						6
						5
						4
						3
						2
						1

DIMENSIONS:		TOLERANCES UNLESS OTHERWISE SPECIFIED:	
mm	0 PLC ±	1 PLC ±	2 PLC ±
	3 PLC ±	4 PLC ±	ANGLES ±
	FINISH		
MATERIAL	WEIGHT	APVD	RESTRICTED TO
		Customer Accessible Production Drawing	

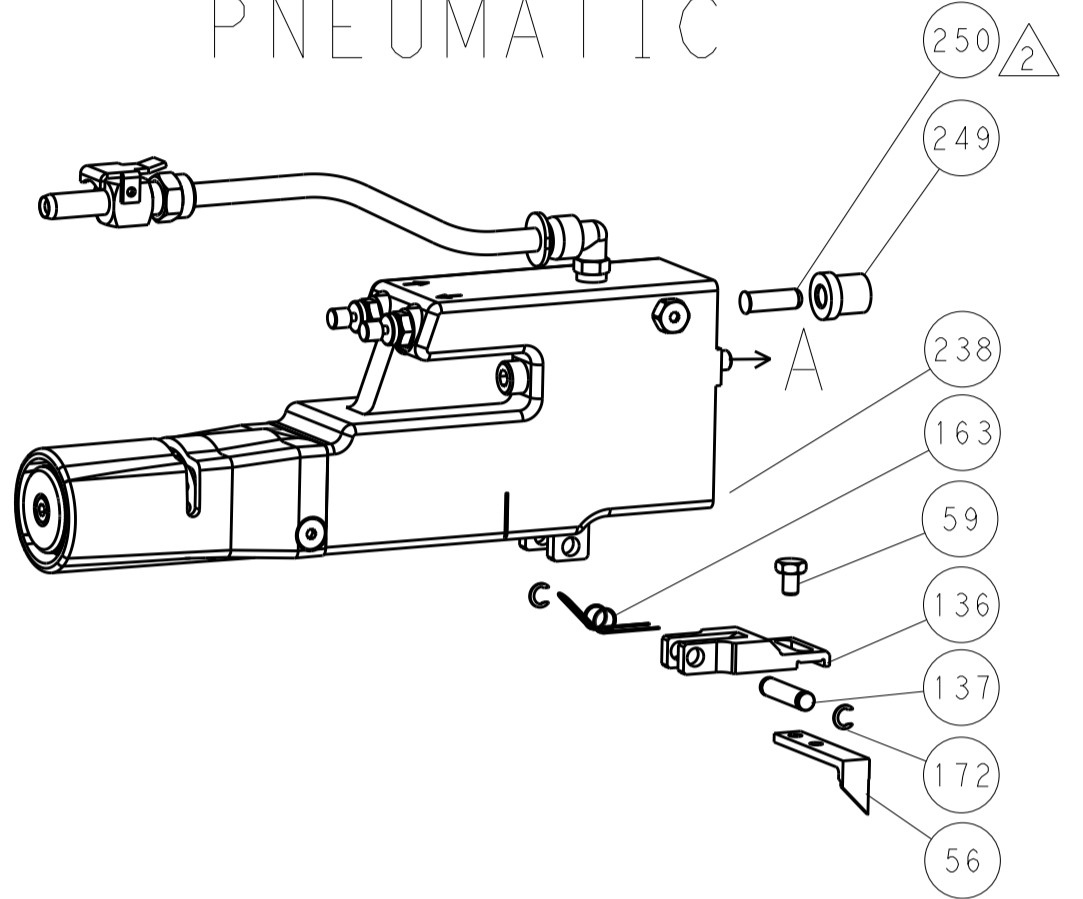
CHN: ZHAO 27JAN2014
 L: ZHANG 27JAN2014
 I: ELBIN 27JAN2014
 NAME: Ocean Side Feed Applicator
 SIZE: A1
 CASE CODE: 00779
 DRAWING NO: C=2266202
 SCALE: 1:2 SHEET 1 of 4 REV: A1

LOC		DIST		REVISIONS			
A		66		REV	DATE	BY	APPV
-				1	SEE SHEET 1	-	-

FEED TYPE MECHANICAL



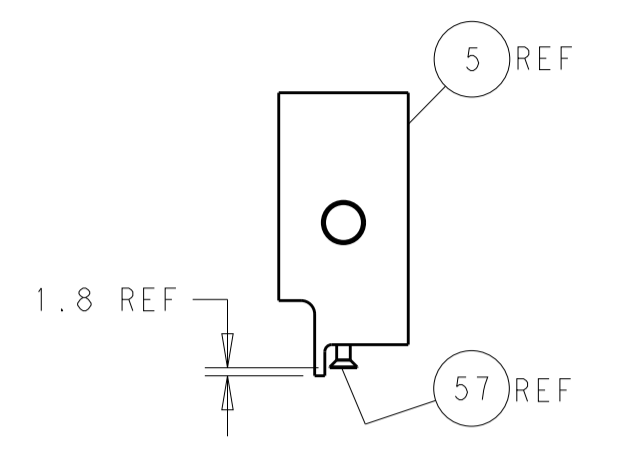
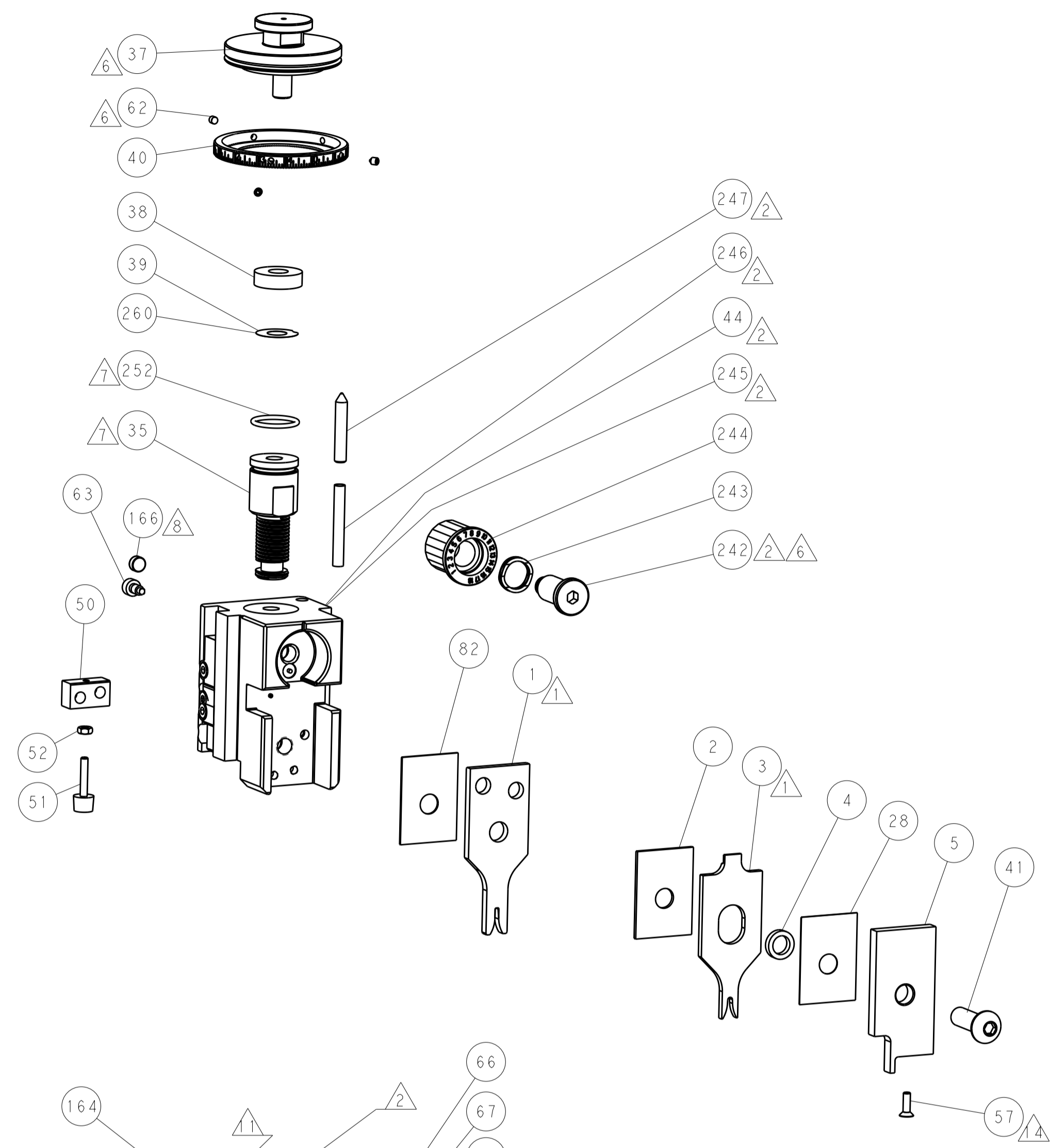
PNEUMATIC



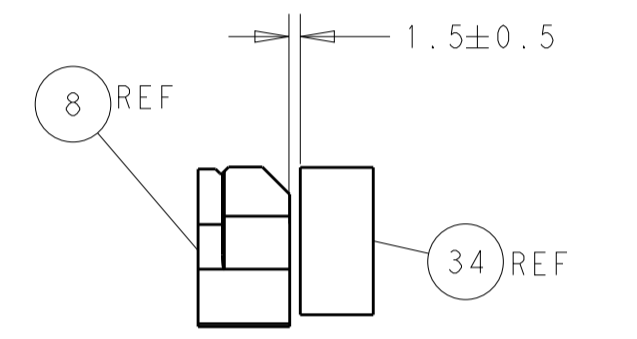
SERVO LATCH PLATE



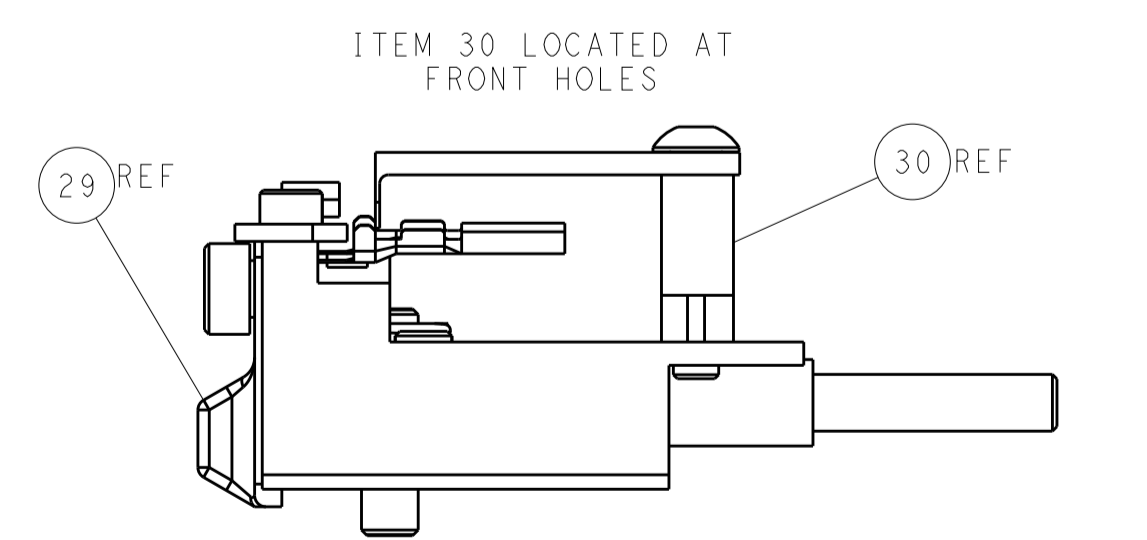
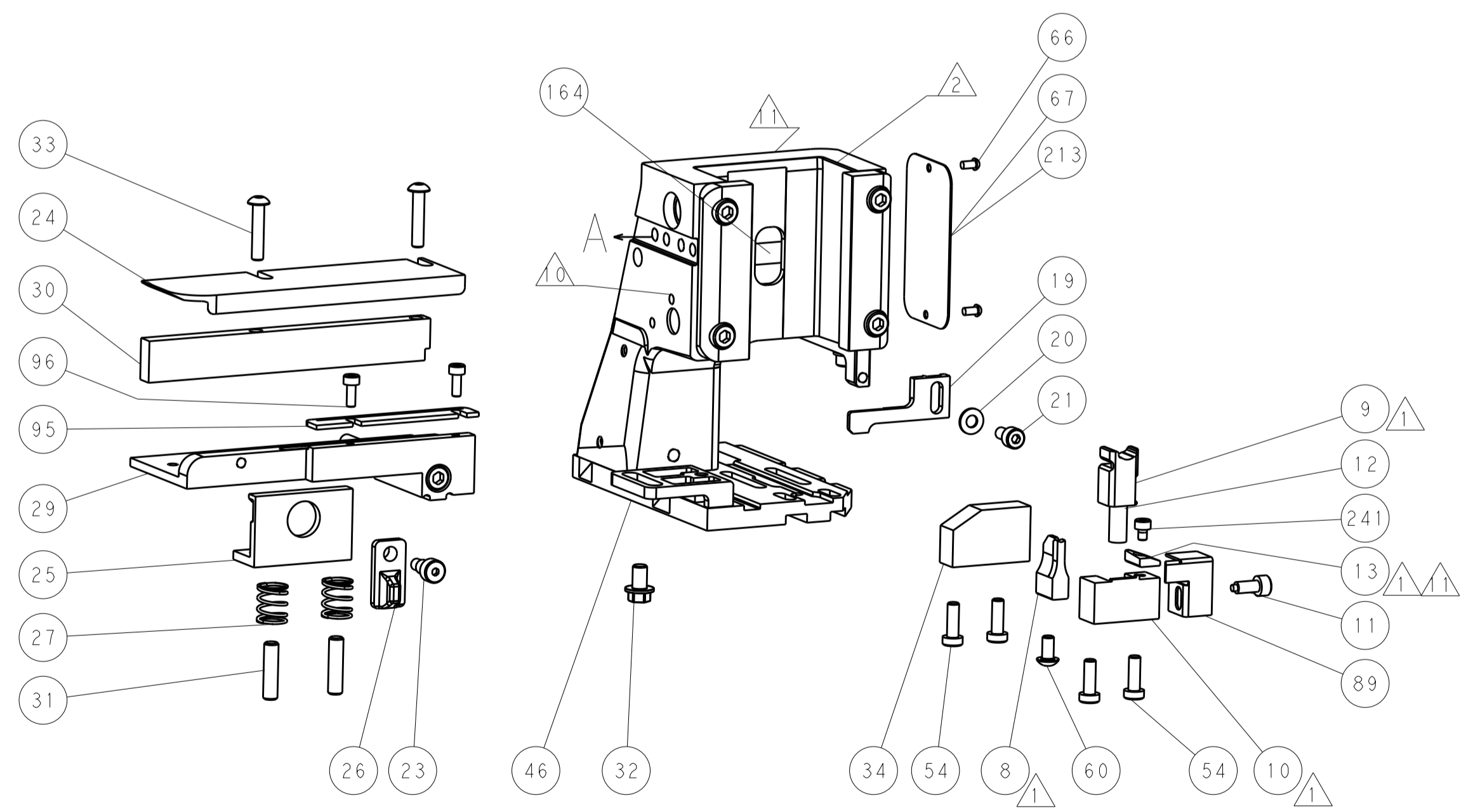
CAM POSITIONS



SHEAR DEPRESSOR DETAIL



TERMINAL SUPPORT LOCATION



FEED TRACK POSITION GUIDE BY INSULATION BARREL

ATLANTIC VERSION
 Shown on sheets 1 of 4 & 2 of 4
 (Pacific version shown on sheets 3 of 4 & 4 of 4)

DIMENSIONS:		TOLERANCES UNLESS OTHERWISE SPECIFIED:		DWG: X. ZHAO 27JAN2014		TE Connectivity	
mm	0 PLC ±	1 PLC ±	2 PLC ±	3 PLC ±	4 PLC ±	5 PLC ±	Harrisburg, PA 17105-3608
MATERIAL:		FINISH:		CHK: L. ZHANG 27JAN2014		NAME: Ocean Side Feed Applicator	
				APVD: T. ELBIN 27JAN2014		PRODUCT SPEC:	
				APPLICATION SPEC:		SIZE: CAGE CODE: DRAWING NO:	
				WEIGHT:		RESTRICTED TO:	
				Customer Accessible Production Drawing		SCALE: 1:2 SHEET 2 OF 4 REV: A1	

PACIFIC VERSION TERMINATOR INTERFACE ADAPTER	PART NUMBER	REVISION	DESCRIPTION	FEED TYPE	APPLICATOR STYLE CONVERSION CHART						
					CONVERT TO	PART NUMBERS REQUIRED					
	2-2266202-1	A	FINE CRIMP HEIGHT ADJUST	MECHANICAL	PNEUMATIC FEED	2119950-1	1338685-1	5-18022-5	2119641-2	2119799-1	2063440-1
					SERVO LATCH PLATE	2119951-1	-	8-2266202-5	1901094-3	-	2168400-6 (QUANTITY 2)
					SMART APPLICATOR	2161326-1	-	8-2266202-4	-	-	
	2-2266202-2	A	FINE CRIMP HEIGHT ADJUST	PNEUMATIC	MECHANICAL FEED	2119949-1	1338685-1	5-18022-5	2119653-2	-	-
					SERVO LATCH PLATE	2119951-1	-	8-2266202-5	1901094-3	-	2168400-6 (QUANTITY 2)
					SMART APPLICATOR	2161326-1	-	8-2266202-4	-	-	
	2-2266202-5	A	FINE CRIMP HEIGHT ADJUST	SERVO LATCH PLATE ⁴	MECHANICAL FEED	2119949-1	1338685-1	5-18022-5	2119653-2	-	-
					PNEUMATIC FEED	2119950-1	1338685-1	5-18022-5	2119641-2	2119799-1	2063440-1
	2-2266202-7	A	FINE CRIMP HEIGHT ADJUST	NONE	-	-	-	-	-	-	-
	7-2266202-7	A	CRIMP TOOLING KIT	-	-	-	-	-	-	-	-

CRIMP	SIZE	TYPE
WIRE	1.40 mm [.055]	F
INSUL	3.05 mm [.120]	O

APPLICATOR INSTRUCTIONS 408-10389

TERMINAL DATA: FORD & SUMITOMO TERMINAL TE CRIMP SPECIFICATION

TERMINAL NAME: TRMNL WIR SNP ON FEM

WIRE STRIP LENGTH	INSULATION DIAMETER RANGE
4.95-5.71 mm [1.95-.225 IN]	2.60mm MAX [1.02 IN MAX]

TERMINAL APPLICATION SPECIFICATION: NONE

TERMINALS APPLIED ⁴

TE TERMINAL	FORD TERMINAL	TE SEAL	FORD SEAL	CABLE DIAMETER
2113423-1	FORD EU5T-14474-FAA	2113424-1	FORD AU5T-14603-EA	1.40-1.90mm
2113423-2	FORD EU5T-14474-DA	2113424-2	FCI 54200391	
2113423-3	SUMITOMO 9988-4690	2113424-3	QSR A-0131	
2113423-4	SUMITOMO 9988-4688			
2113423-5	SUMITOMO 8240-0511			

WIRE SIZE	CRIMP HEIGHT mm [INCH]	CRIMP HEIGHT REFERENCE SETTING
20 AWG	1.19+/-0.05 [.047+/- .002]	6.2
22 AWG	1.09+/-0.05 [.043+/- .002]	7.3

***WARNING**
 ON INSTALLATION, SET WIRE DISC, ITEM 40 TO LARGEST WIRE SIZE SETTING. USE OF SETTINGS BELOW MINIMUM REQUIRED CRIMP HEIGHT SETTING WILL CAUSE DAMAGE TO CRIMP TOOLING.

- ¹ RECOMMENDED SPARE PARTS
- ² GREASE BEARING SURFACES LIGHTLY
- 3. LUBRICATE DAILY PER THE APPLICATOR INSTRUCTION SHEET SUPPLIED WITH THE APPLICATOR.
- ⁴ APPLICATOR SPECIFIC DATA TO BE ENTERED INTO BLANK MEMORY CHIP AT ASSEMBLY. SEE BELOW FOR PART NUMBER:
 MECHANICAL FEED WITH "SMART APPLICATOR" CONVERSION: 8-2266202-4
 PNEUMATIC FEED WITH "SMART APPLICATOR" CONVERSION: 8-2266202-4
 SERVO FEED WITH "FINE CRIMP HEIGHT ADJUST": 8-2266202-5
- 5. ADJUSTMENT OF THE STRIPPER MAY BE REQUIRED WHEN MOVING THE APPLICATOR BETWEEN BENCH AND LEADMAKER APPLICATIONS.
- ⁶ APPLY PART NUMBER 1-23419-5 LOCTITE TO THREADS OF ITEMS 62. APPLY PART NUMBER 2-23419-6 LOCTITE TO THREADS OF ITEMS 242.
- ⁸ GREASE THREADS, GROOVE AND O-RING ON ITEMS 139 & 152.
- ⁸ MAGNET MUST BE ORIENTED CORRECTLY IN ORDER TO PROPERLY ACTUATE THE COUNTER.
- ⁹ CRIMP HEIGHT REFERENCE SETTING WAS THE SETTING USED WHEN THE APPLICATOR WAS QUALIFIED AT THE FACTORY. ADJUSTMENT MAY BE NECESSARY WHEN RUNNING APPLICATOR IN THE FIELD.
- ¹⁰ SPARE FEED CAM STORAGE LOCATION REFER TO INSTRUCTION SHEET FOR ADDITIONAL INFORMATION.
- ¹¹ TO CONVERT THE APPLICATOR TO A NON-CARRIER CUTTING STYLE, REMOVE ITEM 13 AND ATTACH TO THE LOCATION ON BACK SIDE OF THE HOUSING. REFER TO INSTRUCTION SHEET FOR ADDITIONAL INFORMATION.
- ¹² THIS APPLICATOR APPLIES TERMINAL WITH A SEAL.
- ¹³ APPLY TORQ-SEAL IN ALLEN SOCKET TO FILL HOLE AFTER FLAT HD HAS BEEN ADJUSTED TO CORRECT HEIGHT AT QUALIFICATION. APPLY #1-23419-5 LOC-TITE TO THREADS.

ITEM NO	DESCRIPTION	ITEM NO
- 1	1 1 1 1	2119782-1 FINE ADJUST HEAD ASM, PACIFIC STYLE 251
- -	- 1 -	2119640-1 PUSH ROD, AIR FEED 250
- -	- 1 -	2079988-1 BUSHING, LCH5-12, MIZUMI 249
- 1	1 1 1	1-22279-3 SPRING, COMPRESSION 246
- 1	1 1 1	2119082-9 CAM, SNAIL, INSULATION ADJUSTMENT 244
- 1	1 1 1	2079764-1 WASHER, WAVE SPRING, CREST-TO-CREST 243
- 1	1 1 1	2119083-1 RETAINER, INSULATION DIAL 242
- 1	1 1 1	7-18023-7 SCR, SKT HD CAP M3 X 4.0 241
-77	-27 -25 -22 -21	PART NO DESCRIPTION ITEM NO

PACIFIC VERSION
 Shown on sheets 3 of 4 & 4 of 4
 (Atlantic version shown on sheets 1 of 4 & 2 of 4)

SET UP GAUGE	LOC	DIST	REVISIONS			
2119599-1	A	66	REV	DATE	BY	APPD
			-			-

REV	DATE	BY	APPD	DESCRIPTION	ITEM NO
- -	2 -	-	-	2168400-6 SHCS, LOW HEAD, RoHS, M5 X 16	240
- -	- -	-	-	2119580-1 MECHANICAL FEED ASSEMBLY	239
- -	- -	-	-	2063440-1 AIR FEED MODULE	238
- -	- 1 -	-	-	2119740-2 TAG, IDENTIFICATION	213
- -	- 1 -	-	-	1901094-3 SPACER, FEEDER	198
- -	- 1 -	-	-	21045-3 RING, RETAIN, EXTERN, 3/16 CRESCENT	172
- 1	1 1 1	1	1	994969-1 MAGNET, RARE EARTH HIGH ENERGY	166
- REF	REF	REF	REF	994970-2 COUNTER, MAGNETIC	164
- -	- 1 -	-	-	240638-1 SPRING, FEED FINGER	163
- 1	1 1 1	1	1	8-21084-1 O-RING, .801 ID, .070 DIA. MAT.	152
- -	- 1 -	-	-	2119641-2 FEED CAM, AIR FEED	151
- 1	1 1 1	1	1	2119798-2 DETENT PIN	145
- 1	1 1 1	1	1	2079383-8 SCR, BHSC, RoHS (M4 X 16)	144
- 4	4 4 4	4	4	2168400-5 SHCS, LOW HEAD, RoHS, M4 X 20	143
- -	- -	-	-	2119653-2 FEED CAM, POST FEED	142
- 1	1 1 1	1	1	1-2119656-0 APPLICATOR BASIC ASSEMBLY, SF	141
- 1	1 1 1	1	1	2119650-1 RAM, ASIAN STYLE, SIDE FEED	140
- 1	1 1 1	1	1	2119092-2 BOLT, ADJUSTMENT	139
- -	- 1 -	-	-	3-23627-7 PIN, RETAIN, GRVD, 3/16 X .854	137
- -	- 1 -	-	-	2119799-1 HOLDER, FEED FINGER, AF	136
- -	- REF -	-	-	SEE NOTE 4 MEMORY CHIP, PROGRAMMED	135
- -	- 1 -	-	-	1633743-1 SERVO FEED LATCH ASM	133
- -	- REF -	-	-	2119944-1 FEED FINGER ASSEMBLY, SF	117
- 2	2 2 2	2	2	2168083-1 SCR, SKT HD CAP, RoHS, M3 X 8.0	96
- 1	1 1 1	1	1	1-690438-0 FRONT STRIP GUIDE	95
- 1	1 1 1	1	1	318563-1 GUARD, FRONT CHIP	89
- 1	1 1 1	1	1	455888-6 SPACER, CRIMPER	82
- 1	1 1 1	1	1	2119956-1 DOCUMENTATION PACKAGE	71
- 1	- 1 1	1	1	2119740-1 TAG, IDENTIFICATION	67
- 2	2 2 2	2	2	2168078-1 SCREW, DRIVE, RH, RoHS, 2 x .188	66
- 1	1 1 1	1	1	2119793-1 LIMITER, ADJUSTMENT BOLT	63
- 3	3 3 3	3	3	992763-5 SCR, SET, SOC, CONE POINT, M3 x 4.0	62
- -	- 1 -	-	-	5-18022-5 SCR, HEX HD CAP, M4 X 6.0	59
- 1	1 1 1	1	1	985575-3 SCR, FLT SKT HD CAP M3 X 10.0	57
- -	- 1 -	-	-	1338683-5 FEED PAWL	56
- 2	2 2 2	2	2	1-2168083-0 SCR, SKT HD CAP, RoHS, M4 X 10	53
- 1	1 1 1	1	1	5018030-1 NUT, HEX, REG, RoHS, M3	52
- 1	1 1 1	1	1	811242-5 BUMPER, HOLD DOWN	51
- 1	1 1 1	1	1	690753-2 SPACER, TONKER	50
- -	- 1 2	-	-	18023-9 SCR, SKT HD CAP M4 X 6.0	49
- -	- -	-	-	2119652-1 FEED CAM, PRE FEED	48
- 1	1 1 1	1	1	2079383-7 SCR, BHSC, RoHS (M8 X 25)	41
- 1	1 1 1	1	1	2119645-1 DISC, NUMBERED FA WIRE ADJUSTMENT	40
- 1	1 1 1	1	1	2119957-1 APPLICATOR SHIM PACK	39
- 1	1 1 1	1	1	2119644-1 RAM WASHER, PRECISION	38
- 1	1 1 1	1	1	1752356-1 SUPPORT, TERMINAL	34
- 2	2 2 2	2	2	2079383-5 SCR, BHSC, RoHS (M4 X 20)	33
- 1	1 1 1	1	1	2161328-1 HEX HEAD, FLANGED, M5 x 8mm LONG	32
- 2	2 2 2	2	2	2-18032-5 SCR, SET, FLT POINT M5 X 20.0	31
- 1	1 1 1	1	1	1-1320908-0 SPACER, STRIP GUIDE	30
- 1	1 1 1	1	1	2119959-3 ASSEMBLY, STRIP GUIDE	29
- 1	1 1 1	1	1	455888-3 SPACER, CRIMPER	28
- 2	2 2 2	2	2	22283-1 SPRING, COMPRESSION	27
- 1	1 1 1	1	1	356835-1 LEVER, DRAG RELEASE	26
- 1	1 1 1	1	1	240792-5 DRAG, TERMINAL	25
- 1	1 1 1	1	1	1320928-2 STRIP GUIDE	24
- 1	1 1 1	1	1	980371-4 SCR, SKT HD SHLDR 5.0 DIA X 6.0	23
- 1	1 1 1	1	1	2168083-2 SCR, SKT HD CAP, RoHS, M4 X 8.0	21
- 1	1 1 1	1	1	1-18028-2 WASHER, FLAT, REG M4	20
- 1	1 1 1	1	1	2119533-1 STRIPPER, SIDE FEED	19
- 1	1 1 1	1	1	2119806-1 INSERT, SHEAR	13
- 1	1 1 1	1	1	3-22280-3 SPRING, COMPRESSION	12
- 1	1 1 1	1	1	1-356885-4 STOP, SHEAR	11
- 1	1 1 1	1	1	2119805-1 SHEAR HOLDER, FRONT	10
- 1	1 1 1	1	1	318707-1 FLOATING SHEAR, FRONT	9
- 1	1 1 1	1	1	2-1633917-3 ANVIL, COMBINATION	8
- -	- -	-	-	-	7
- -	- -	-	-	-	6
- 1	1 1 1	1	1	2119781-1 DEPRESSOR, SHEAR	5
- 1	1 1 1	1	1	238011-9 BLOCK, CRIMPER SPACER	4
- 1	1 1 1	1	1	1-2119784-8 CRIMPER, INSULATION O PREMIUM	3
- 1	1 1 1	1	1	1-455888-2 SPACER, CRIMPER	2
- 1	1 1 1	1	1	4-456402-7 CRIMPER, WIRE PREMIUM	1

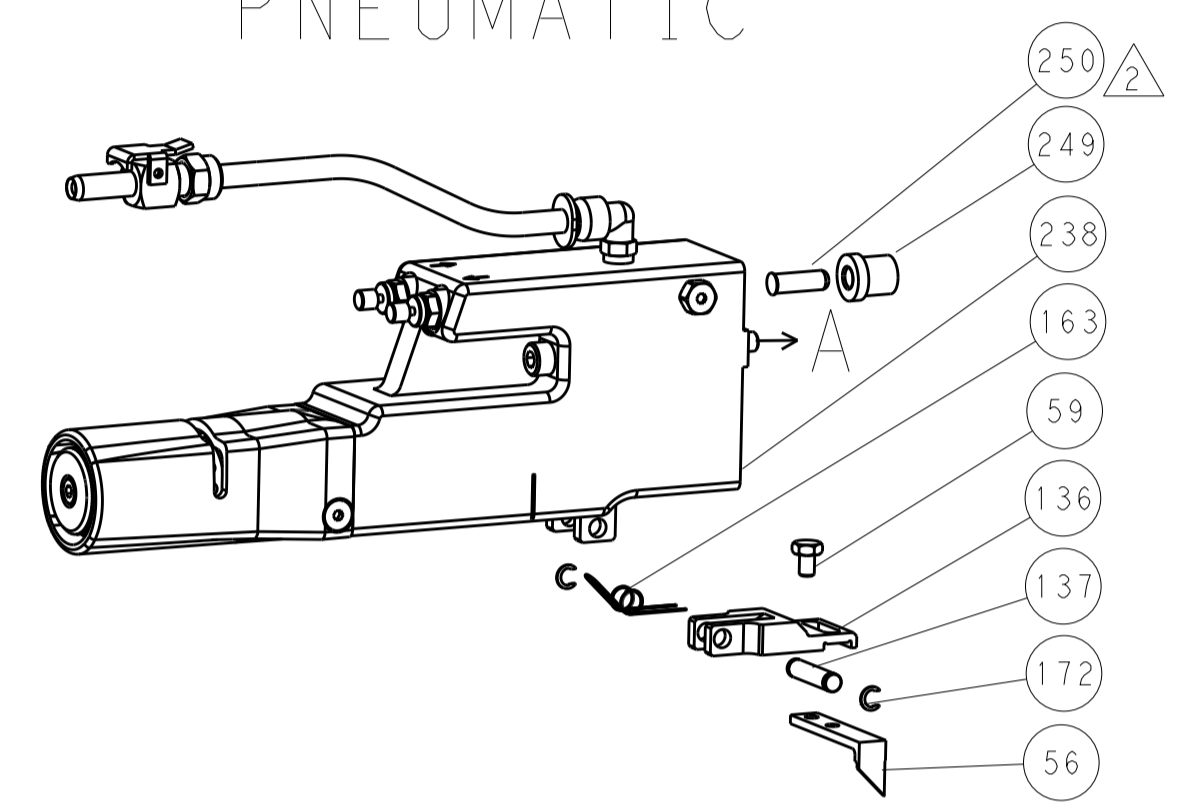
DIMENSIONS:		TOLERANCES UNLESS OTHERWISE SPECIFIED:		DRAWING NO		CAGE CODE		SCALE		SHEET		REV	
mm	0 PLC ±	1 PLC ±	2 PLC ±	3 PLC ±	27JAN2014		A1		3		4		
				APVD: J. ZHANG 27JAN2014		NAME: Ocean Side Feed Applicator		SCALE: 1:2		SHEET 3 OF 4		REV A1	
MATERIAL: FINISH:				WEIGHT:		Customer Accessible Production Drawing		SCALE: 1:2		SHEET 3 OF 4		REV A1	

REVISONS		DATE	OWN	APVD
LOC	DIST			
A	66			
P	LTM	DESCRIPTION		
-	-	SEE SHEET 1	-	-

FEED TYPE MECHANICAL



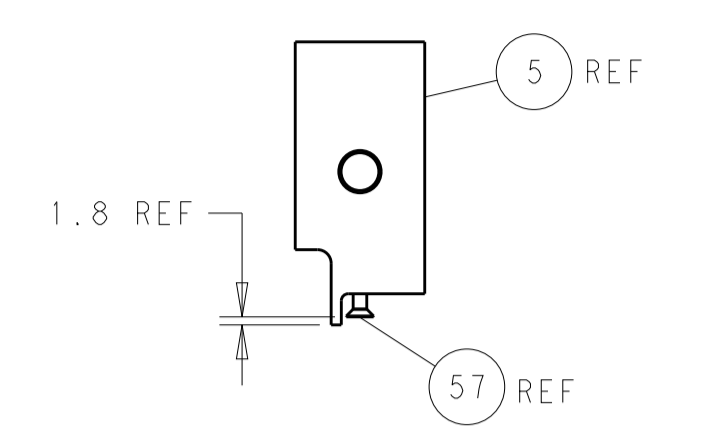
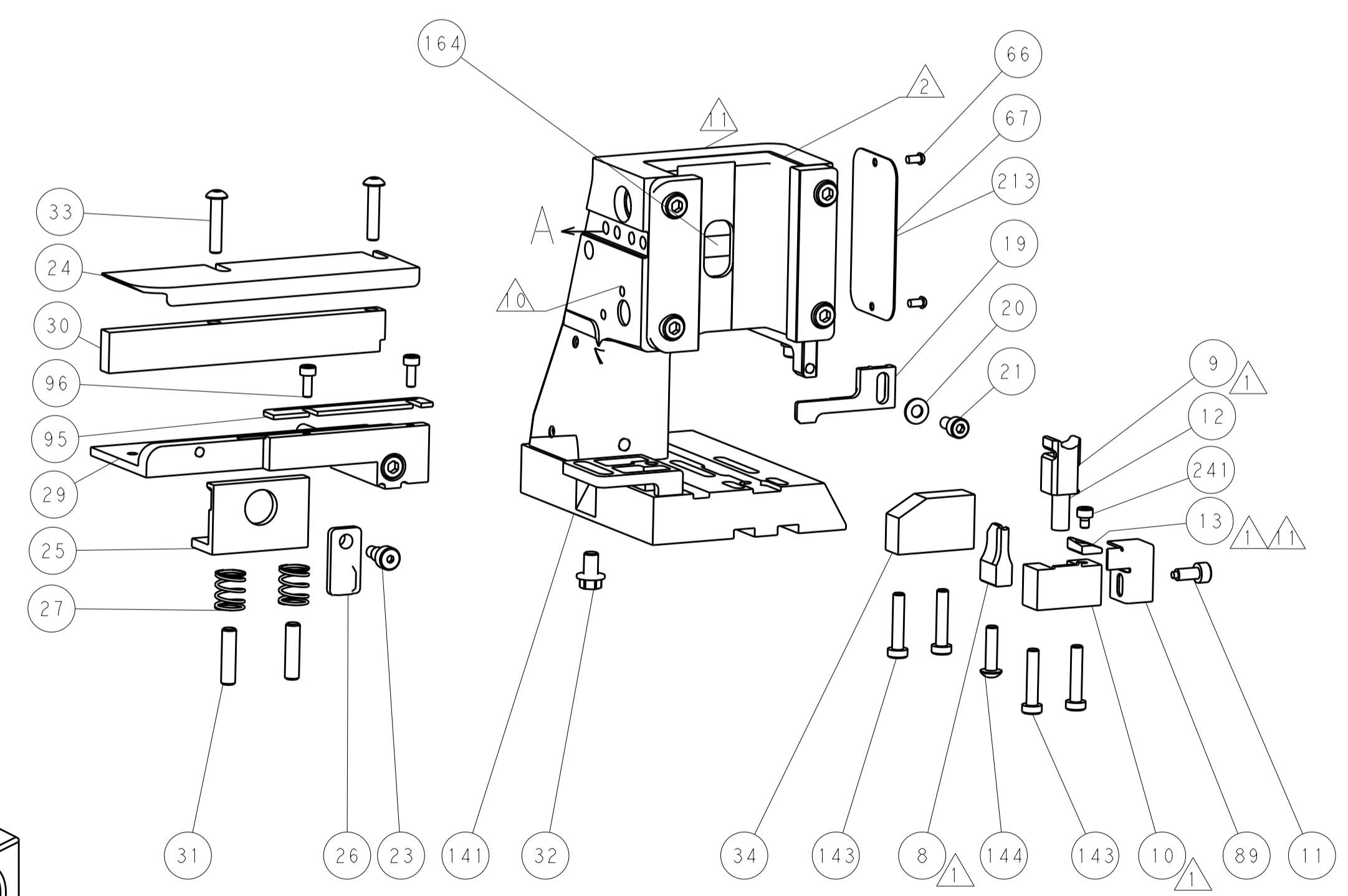
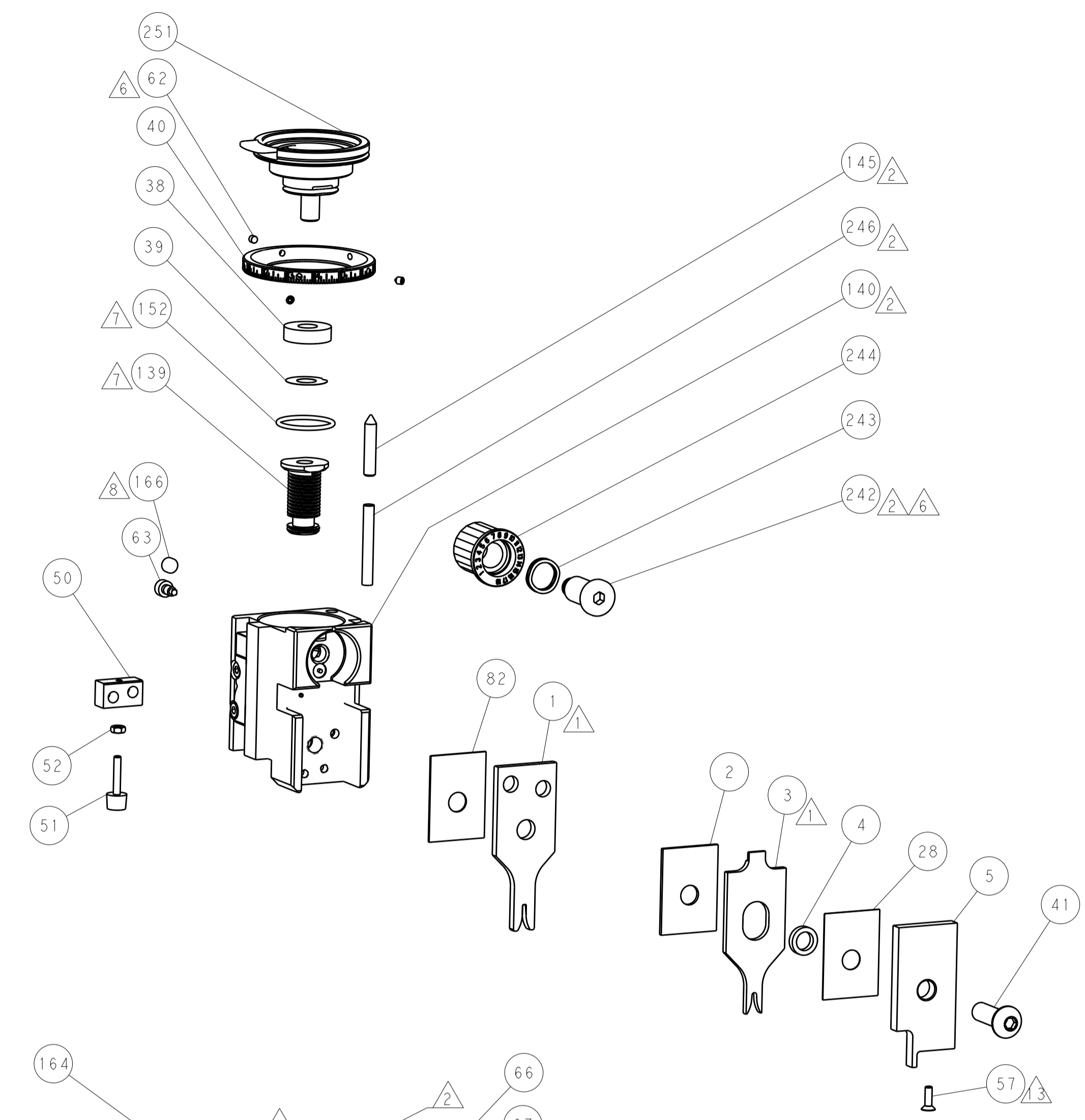
PNEUMATIC



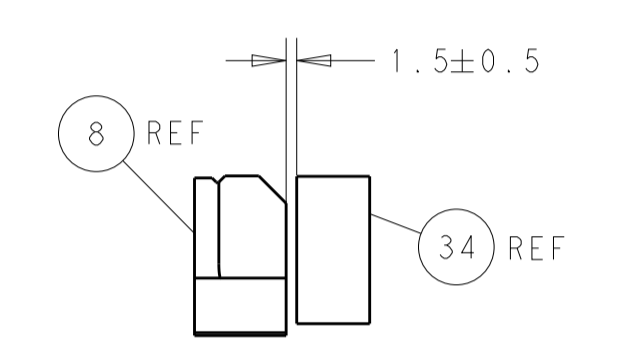
SERVO LATCH PLATE



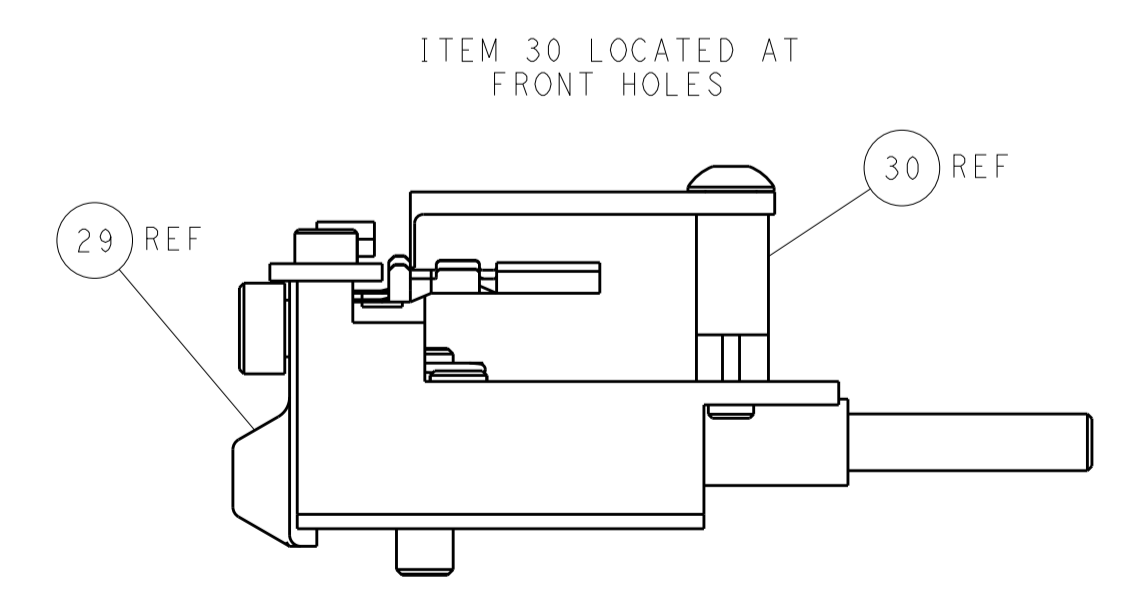
CAM POSITIONS



SHEAR DEPRESSOR DETAIL



TERMINAL SUPPORT LOCATION



FEED TRACK POSITION
GUIDE BY INSULATION BARREL

PACIFIC VERSION
 Shown on sheets 3 of 4 & 4 of 4
 (Atlantic version shown on sheets 1 of 4 & 2 of 4)

DIMENSIONS:		TOLERANCES UNLESS OTHERWISE SPECIFIED:		DWG: X. ZHAO 27JAN2014		CHK: L. ZHANG 27JAN2014		APVD: T. ELBIN 27JAN2014		NAME: Ocean Side Feed Applicator	
mm	0 PLC	±		SIZE	CAGE CODE	DRAWING NO	RESTRICTED TO	STE TE Connectivity Harrisburg, PA 17105-3608			
	1 PLC	±		SCALE	00779	©=2266202		Customer Accessible Production Drawing			
	2 PLC	±		SCALE	1:2	SHEET 4 OF 4	REV	A1			
	3 PLC	±		SHEETS 1 & 2 ARE NOT REQUIRED FOR PACIFIC VERSION							
	4 PLC	±									
	ANGLES	±									
MATERIAL	FINISH										