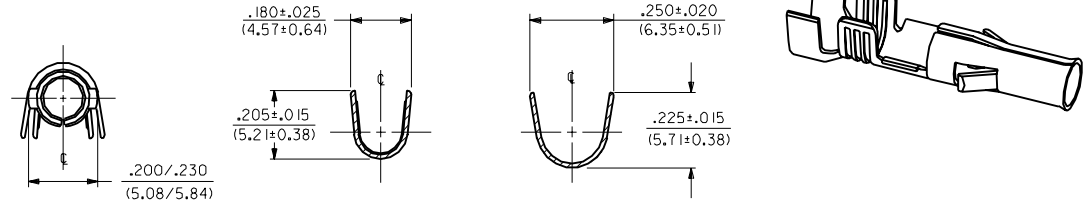
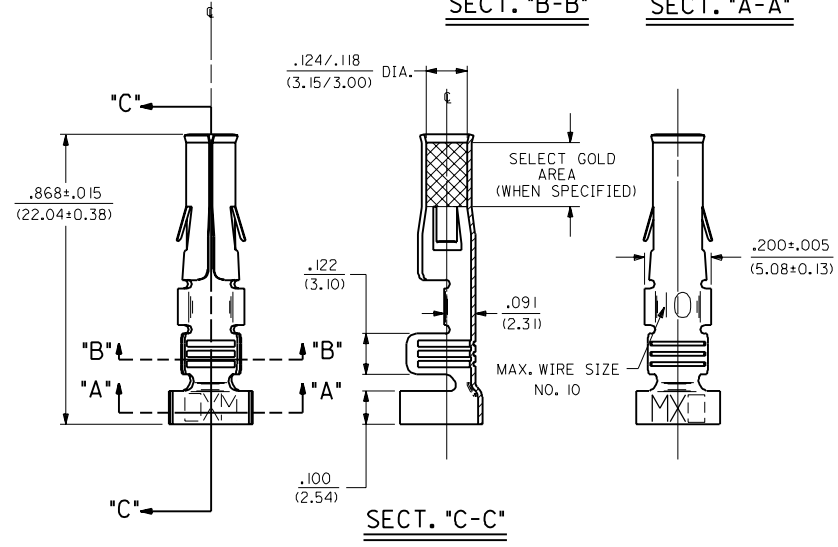


PART NO.	ENG. NO.	FLAT STOCK PART NO.
18-12-1602	1901-I(P90)DL	80-02-1302
18-12-1601	1901-I(P90)I	80-02-1302



SECT. "B-B"      SECT. "A-A"



SECT. "C-C"

- NOTES:
1. TERMINAL FOR USE WITH .125/(3.17) SERIES HOUSINGS AND WILL ACCEPT 10 THRU 14 AWG WIRE HAVING A .180/(4.57) MAX. DIAMETER INSULATION.
  2. INSERTION FORCE: 6.0 LBS. MAX. WHEN TERMINAL IS INSERTED INTO .125/(3.17) DIA. CORE HOLE.
  3. PULL OUT FORCE: 30 LBS. MIN. RETENTION IN HOUSING .

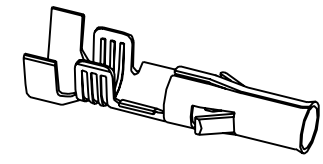
FINISH CODES:  
901 HOT TIN DIP .000020/(0.0005) MIN.

**LEGEND**

1901-I(\*\*\*\*)\*

- VERSION
- .180/(4.57) MAX. DIA. INSULATION
- P=PREPLATE
- BLANK=POSTPLATE
- FINISH CODE
- FORM
- BLANK=CHAIN
- L=LOOSE

MATERIAL NOTES:  
1. CARTRIDGE BRASS, ALLOY #C26000;  
.013/(0.33) THICK, SPRING TEMPER



REV.	DATE	DESCRIPTION
E3	9/1/95	ADDED ISO VIEW UCR 98-0248 WANG 98-05-20
E2	9/1/95	OBS. -(P555) & -(P555) ECR U6 0312 9/1/95 RW
E1	8/11/92	X-REMOVE -(P555) ECR U2 0731 8/11/92 RW
E	3-5-90	ADD SELECT AREA ECR LUO 0230 3-5-90 RW
D	11-28-89	REVISE PER ECR U9 1189 11-28-89 TRM
C	6-13-88	REV. & REDRAWN ECR U9 1602 6-13-88 RW

DIMENSIONS SHOWN METRIC (INCH) UNLESS OTHERWISE SPECIFIED TOLERANCES: ANGULAR ± .001°		▽ = 0      ▼ = 0		REVISE ONLY ON CAD SYSTEM	
TITLE CRIMP TERMINAL, FEMALE, .125/(3.17) DIA 10-14 AWG .180/(4.57) DIA. INSUL.				SHEET NO. DATE 1 OF 1 6/30/88	
PART NO. MOLEX INCORPORATED LITTLE ROCK, AR 72616 U.S.A.				DRAWING NO. SD-1901-I	
DRAWN BY: CEP		CHKD BY: RW		FILE NAME: S19011X1.DWG	
APP'D BY: RAS		SCALE: 4:1		DIV. SIZE: CP C	