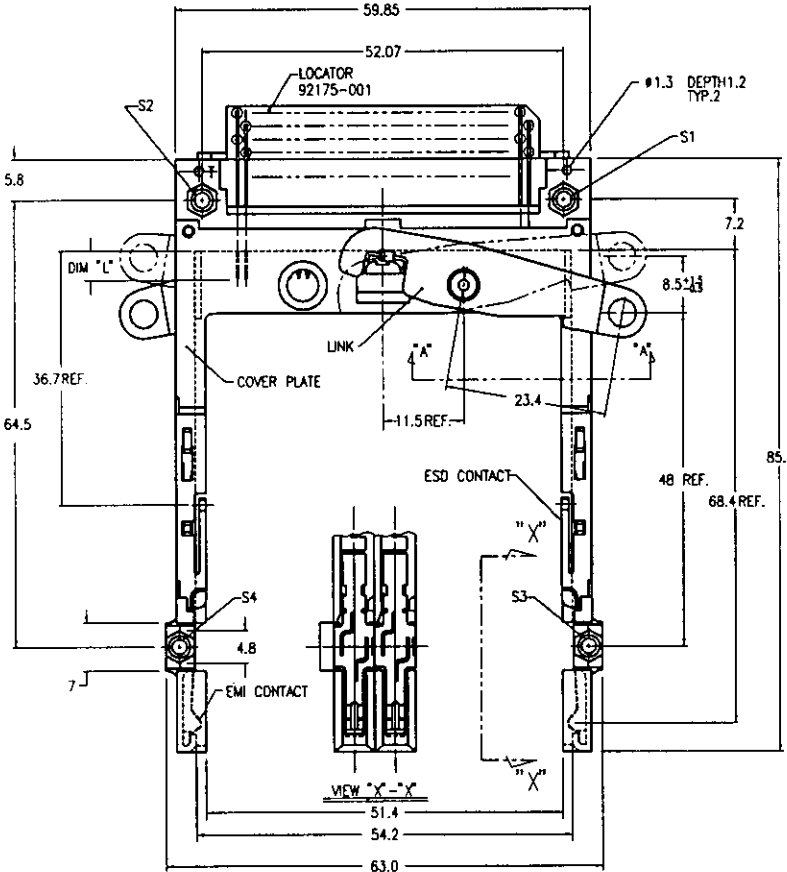
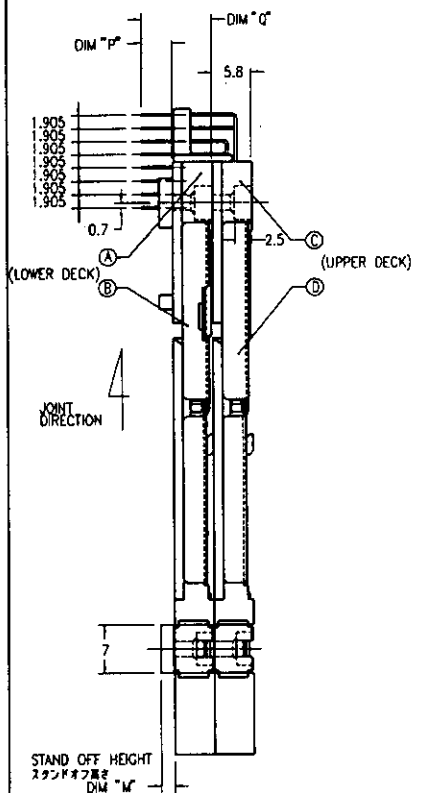


PRODUCT NO.
92788-000
92788-020

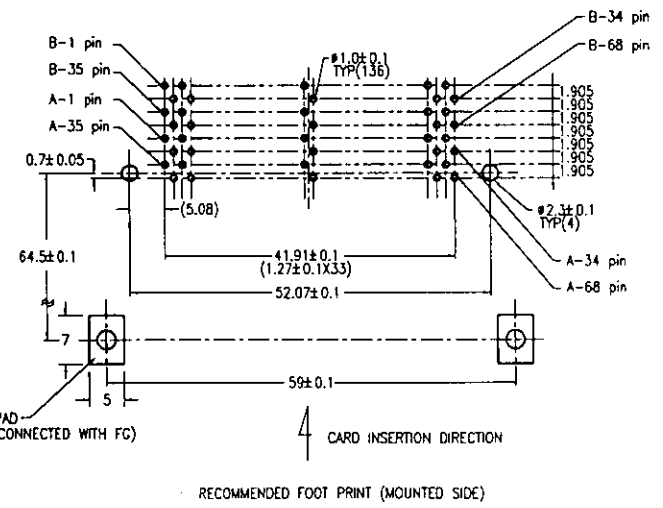
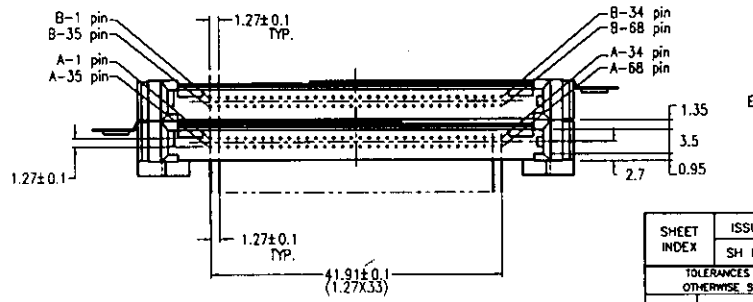
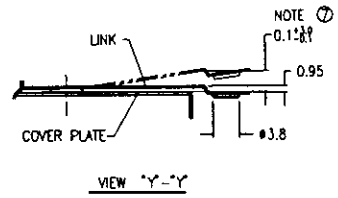
REVISIONS				
REV	DESCRIPTION	ECN	BY	DATE
A	RELEASED	J30044	N.T.	12/14/93
B	REVISED	J30087	N.T.	3/19/95
C	REVISED	J50086	M.K.	6/2/96



NOTE

- EJECT FORCE 3.5kg MAX.
- ASSY PROCESS
 - TO MOUNT PART ②, ③ ON PWB WITH SCREW (S1,S2) AND SOLDER.
 - TO JOINT PART ④, ⑤ INTO PART ⑥, ⑦ THEN FIX PART ⑧, ⑨ WITH 2 SCREWS (S3,S4).
- EJECT TRAVEL 8.0mm
- MATERIAL
 - PART ②, ③ (HEADER ASSY)
 - HOUSING : LCP UL94V-0 BLACK
 - LOCATOR : G.F. 6.6 NYLON UL94V-0 BLACK
 - PIN : PHOSPHOR BRONZE
 - PART ④, ⑤ (EJECT MECHANISM ASSY)
 - GUIDE : POLYPHTHAMID UL94V-0 BLACK
 - PLATE : STAINLESS
 - EMI CONTACT : PHOSPHOR BRONZE
- FINISH (PIN)
 - UNDER PLATING : 0.5μm MIN. Ni
 - CONTACT AREA : 0.1μm MIN. Au OVER 0.5μm MIN. Pd-Ni
 - SOLDER TAIL : 2.5μm MIN. Sn-Pb
- DIM "L"

4.25±0.1	3.5±0.1	5.0±0.1
OTHERS	36.67	117.34
		35.168
- DIM 0.15±0.1 SHOULD BE 0.1±0.1 (LOWER DECK) AND 0.1±0.1 (UPPER DECK) AFTER ASSEMBLING WITH YOUR PUSH OR SLIDE BUTTON.
- GENERAL TOLERANCE : ±0.3
- SEE SHEET 1 REGARDING COMPONENTS



SHEET INDEX		ISSUE		DATE		CUSTOMER	
SH NO.		SH NO.		DATE		COPY	
				6/2/95			
				6/2/95			
				9/17/95			
				9/13/95			

LINEAR	SEE NOTE ④	DR	J. Omoto	DATE	6/2/95	CUSTOMER	BERG ELECTRONICS
		ENGR	M. Kojima	DATE	6/2/95	COPY	1/1/1
		CHK		DATE	9/17/95	SCALE	2/1
		APPR		DATE	9/13/95	SIZE	C
						DWG. NO.	92788
						REV	C
						SHEET	2 of 2

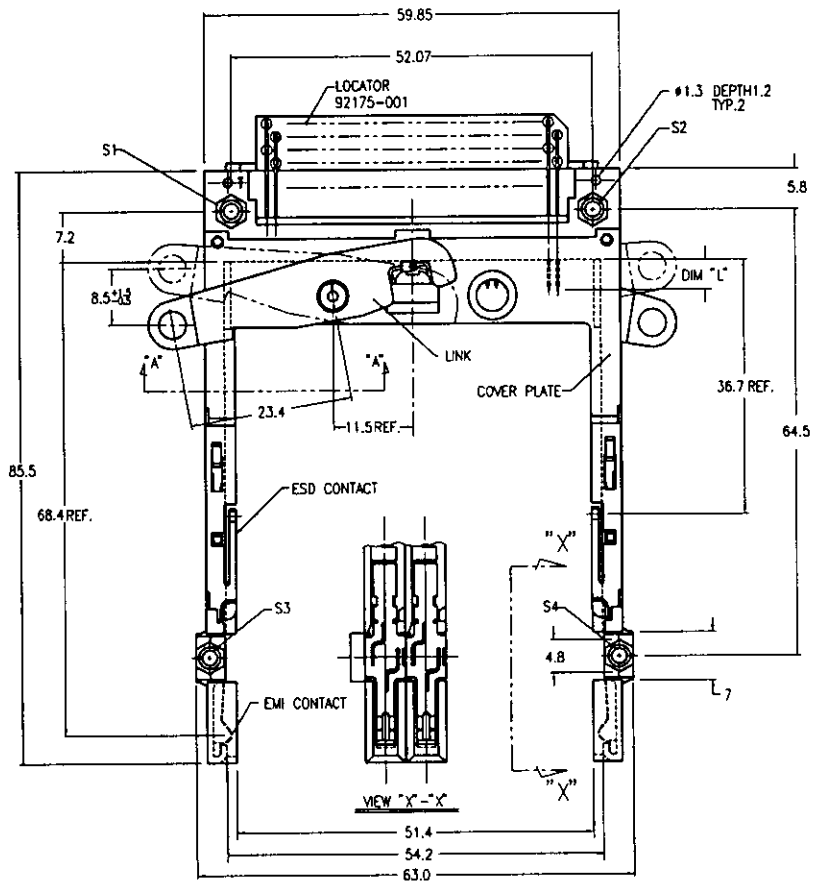
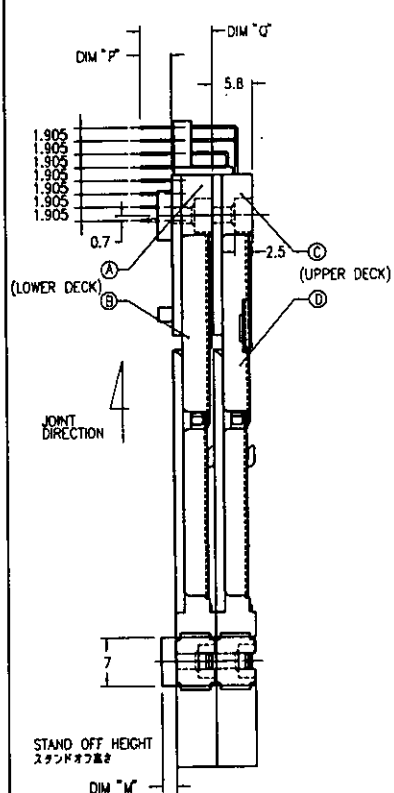
BERG ELECTRONICS

68P DOUBLE EJECTOR TYPE I / I / I
NON-PUSH ROD

DO NOT SCALE PRINT THIS INFORMATION IS CONFIDENTIAL AND IS DISCLOSED TO YOU ON CONDITION THAT NO FURTHER DISCLOSURE IS MADE BY YOU TO OTHER THAN BERG PERSONNEL WITHOUT WRITTEN AUTHORIZATION FROM BERG ELECTRONICS JAPAN INC.

PRODUCT NO.
92788-100
92788-120

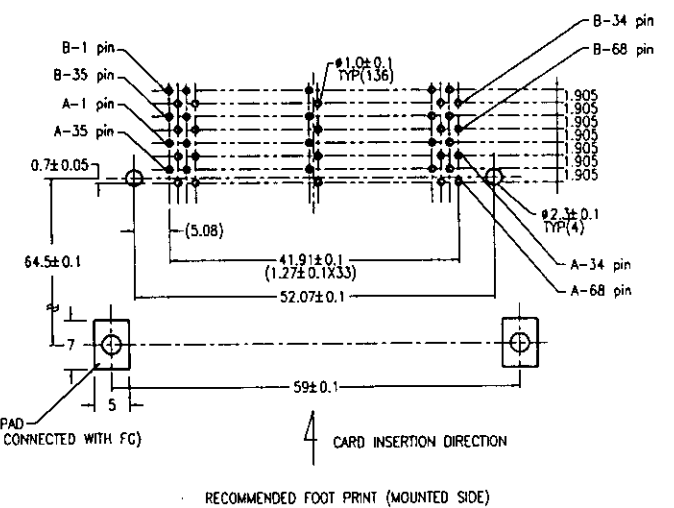
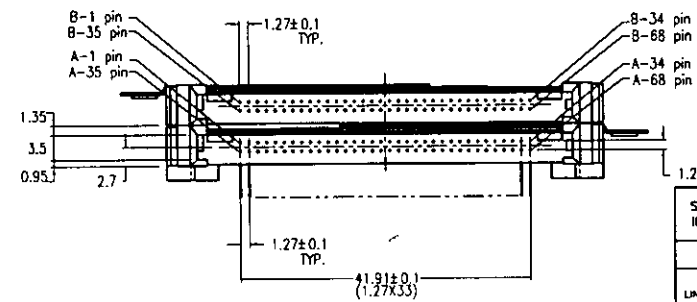
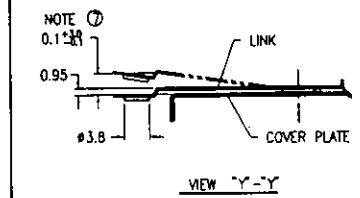
REVISIONS				
REV	DESCRIPTION	ECN	BY	DATE
A	RELEASED	J50023	N.T	1/14/93
B	REVISED	J50086	M.K	6/2/95



NOTE
 1. EJECT FORCE 3.5kg MAX.
 2. ASSY PROCESS
 2.1 TO MOUNT PART ②, ③ ON PWB WITH SCREW (S1,S2) AND SOLDER.
 2.2 TO JOINT PART ②, ③ INTO PART ①, ④ THEN FIX PART ②, ③ WITH 2 SCREWS (S3,S4).
 3. EJECT TRAVEL 8.0mm
 ④ MATERIAL
 4.1 PART ②, ③ (HEADER ASSY)
 HOUSING : LCP UL94V-0 BLACK
 LOCATOR : G.F. 6.6 NYLON UL94V-0 BLACK
 PIN : PHOSPHOR BRONZE
 4.2 PART ④, ⑤ (EJECT MECHANISM ASSY)
 GUIDE : POLYPHTHARAMID UL94V-0 BLACK
 PLATE : STAINLESS
 EMI CONTACT : PHOSPHOR BRONZE
 ⑥ FINISH (PIN)
 UNDER PLATING : 0.5 μm MIN. Ni
 CONTACT AREA : 0.1 μm MIN. Au OVER 0.5 μm MIN. Pd-Ni
 SOLDER TAIL : 2.5 μm MIN. Sn-Pb
 6. DIM "L"

4.25±0.1	3.5±0.1	5.0±0.1
OTHERS	36.67	33.5±0.1

 ⑦ DIM 0.1±0.05 SHOULD BE 0.1±0.1 (LOWER DECK) AND 0.1±0.1 (UPPER DECK) AFTER ASSEMBLING WITH YOUR PUSH OR SLIDE BUTTON.
 8. GENERAL TOLERANCE : ±0.3
 9. SEE SHEET 1 REGARDING COMPONENTS



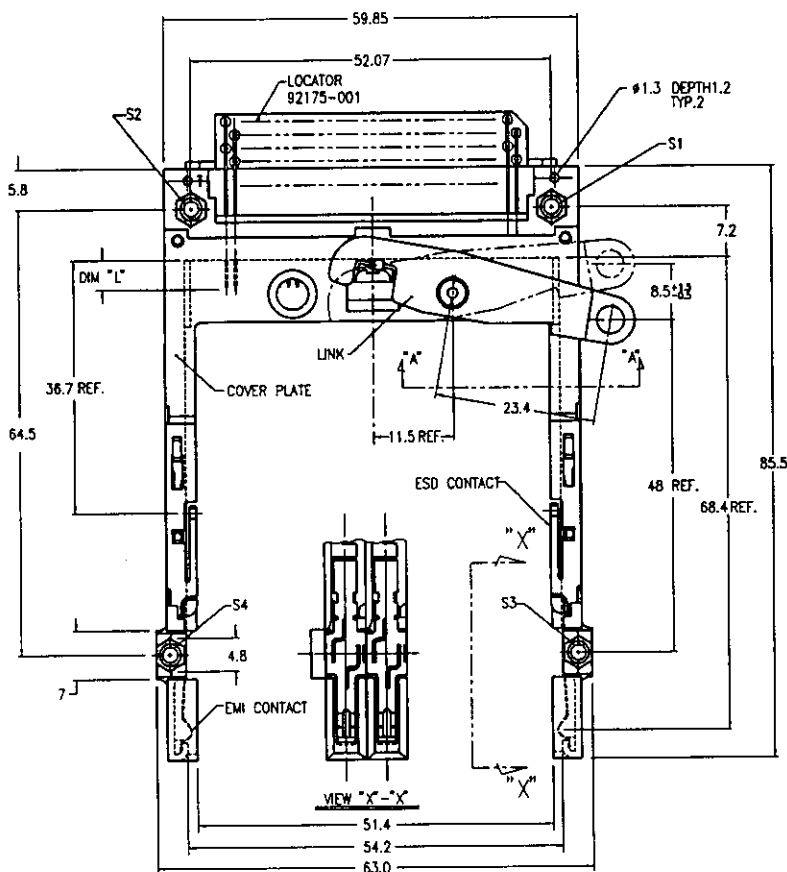
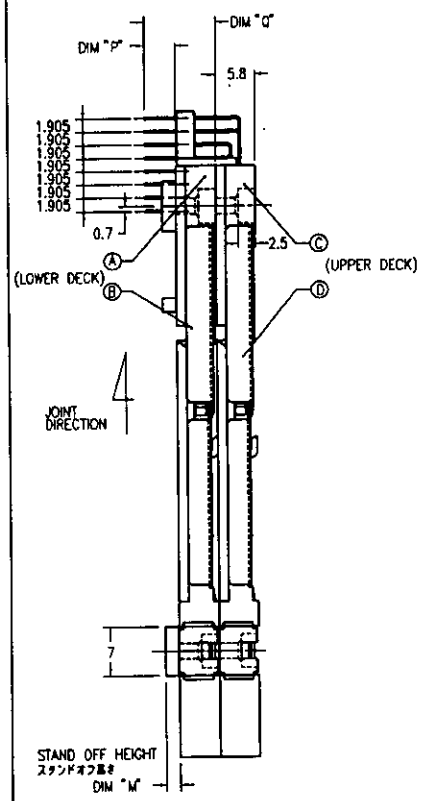
DO NOT SCALE PRINTED INFORMATION IS CONSIDERED VALID AND IS OBSOLETE IN YOU ON COMPANY THAT NO FURTHER DEVELOPMENT IS MADE BY YOU TO OTHER THAN BEING PERMITTED, WITHOUT WRITTEN AUTHORIZATION FROM BERG ELECTRONICS JAPAN INC.

SHEET INDEX	ISSUE SH. NO.	MAT	DR	DATE	CUSTOMER COPY
			S. Omoto	8/2/95	
		SEE NOTE ④	ENGR	M. Kojima	8/2/95
		SEE NOTE ⑤	CHK		
			APPV		

BERG ELECTRONICS
 68P DOUBLE EJECTOR TYPE I / I / I
 NON-PUSH ROD
 SCALE: SIZE DWG. NO. REV SHEET
 2/1 C 92788 B 3or

PRODUCT NO.
92788-200
92788-220

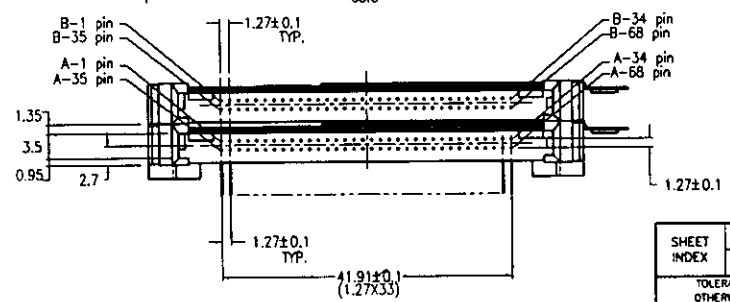
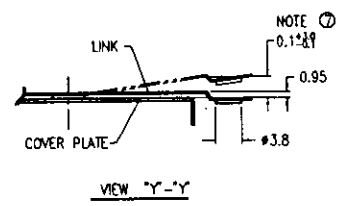
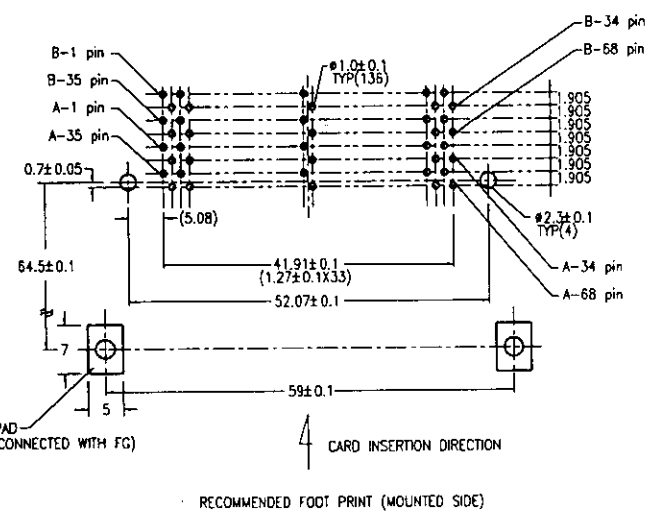
REVISIONS				
REV	DESCRIPTION	ECN	BY	DATE
A	RELEASED	430044	N.T	1/14/93
B	REVISED	450086	M.K	6/2/98



NOTE
 1. EJECT FORCE 3.5kg MAX.
 2. ASSY PROCESS
 2.1 TO MOUNT PART ②, ③ ON PWB WITH SCREW (S1,S2) AND SOLDER.
 2.2 TO JOINT PART ④, ⑤ INTO PART ②, ③ THEN FIX PART ②, ③ WITH 2 SCREWS (S3,S4).
 3. EJECT TRAVEL 8.0mm
 ④ MATERIAL
 4.1 PART ②, ③ (HEADER ASSY)
 HOUSING : LCP UL94V-0 BLACK
 LOCATOR : G.F. 6.6 NYLON UL94V-0 BLACK
 PIN : PHOSPHOR BRONZE
 4.2 PART ④, ⑤ (EJECT MECHANISM ASSY)
 GUIDE : POLYPHTHAMID UL94V-0 BLACK
 PLATE : STAINLESS
 EMI CONTACT : PHOSPHOR BRONZE
 ⑤ FINISH (PIN)
 UNDER PLATING : 0.5μm MIN. Ni
 CONTACT AREA : 0.1μm MIN. Au OVER 0.5μm MIN. Pd-Ni
 SOLDER TAIL : 2.5μm MIN. Sn-Pb
 6. DIM "L"

4.25±0.1	3.5±0.1	5.0±0.1
OTHERS	36.67	34.68

 ⑦ DIM 0.1±0.1 SHOULD BE 0.1±0.1 (LOWER DECK) AND 0.1±0.1 (UPPER DECK) AFTER ASSEMBLING WITH YOUR PUSH OR SLIDE BUTTON.
 8. GENERAL TOLERANCE : ±0.3
 9. SEE SHEET 1 REGARDING COMPONENTS



SHEET INDEX	ISSUE SH NO.	MAT	DR	DATE	CUSTOMER COPY
			S. Omata	6/2/99	
		SEE NOTE ④	ENGR	6/2/99	
			CHK	9/1/99	
		SEE NOTE ⑤	APPR	9/1/99	

LINEAR	FINISH	SCALE	SIZE	DWG. NO.	REV	SHEET
		2/1	C	92788	B	4 of

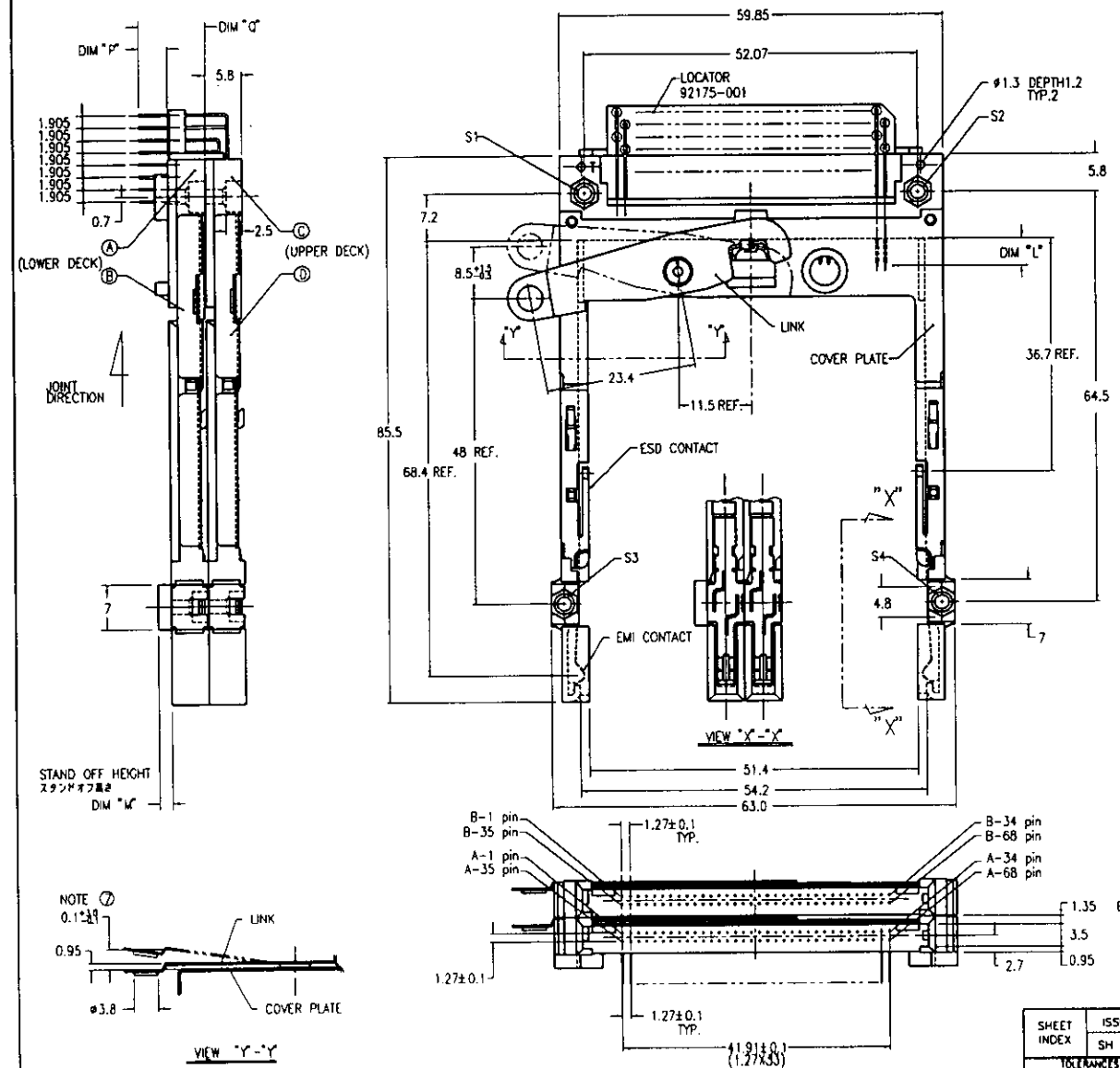
BERG
ELECTRONICS

68P DOUBLE EJECTOR TYPE I / II / III
NON-PUSH ROD

DO NOT SCALE PRINT THIS INFORMATION IS CONFIDENTIAL AND IS DISCLOSED TO YOU ON CONDITION THAT NO FURTHER DISCLOSURE IS MADE BY YOU TO OTHER THAN BERG PERSONNEL WITHOUT WRITTEN AUTHORIZATION FROM BERG ELECTRONICS JAPAN K.K.

PRODUCT NO.
92788-300
92788-320

REVISIONS				
REV	DESCRIPTION	ECN	BY	DATE
A	RELEASED	U30044.N.T		1/14/79
B	REVISED	U50086.M.K		4/2/79



NOTE

- EJECT FORCE 3.5Kg MAX.
- ASSY PROCESS
 2.1 TO MOUNT PART ②, ③ ON PWB WITH SCREW (S1,S2) AND SOLDER.
 2.2 TO JOINT PART ④, ⑤ INTO PART ②, ③ THEN FIX PART ②, ③ WITH 2 SCREWS (S3,S4).
- EJECT TRAVEL 8.0mm

④ MATERIAL

- PART ②, ③ (HEADER ASSY)
 HOUSING : LCP UL94V-0 BLACK
 LOCATOR : G.F. 6.8 NYLON UL94V-0 BLACK
 PIN : PHOSPHOR BRONZE
- PART ④, ⑤ (EJECT MECHANISM ASSY)
 GUIDE : POLYPHTHARAMID UL94V-0 BLACK
 PLATE : STAINLESS
 EMI CONTACT : PHOSPHOR BRONZE

⑤ FINISH (PIN)

UNDER PLATING : 0.5 μm MIN. Ni
 CONTACT AREA : 0.1 μm MIN. Au OVER 0.5 μm MIN. Pd-Ni
 SOLDER TAIL : 2.5 μm MIN. Sn-Pb

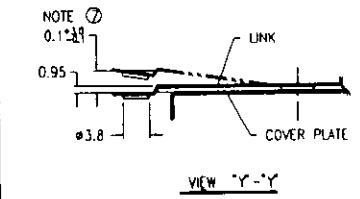
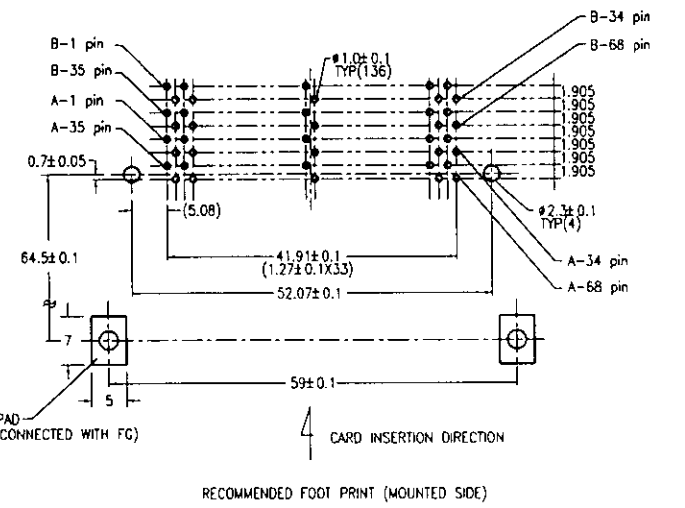
6. DIM "L"

4.25±0.1	3.5±0.1	5.0±0.1
OTHERS	36.67	34.18

⑦ DIM 0.1±0.1 SHOULD BE 0.1±0.1 (LOWER DECK) AND 0.1±0.1 (UPPER DECK) AFTER ASSEMBLING WITH YOUR PUSH OR SLIDE BUTTON.

8. GENERAL TOLERANCE : ±0.3

9. SEE SHEET 1 REGARDING COMPONENTS



SHEET INDEX	ISSUE	DATE	BY	CUSTOMER COPY
	SH. NO.	1/27/79	S. Omoto	
TOLERANCES UNLESS OTHERWISE SPECIFIED		UNIT	DR	
		MM	A. Kajima	
		MM	S. Saito	
		MM	R. Saito	

BERG
ELECTRONICS

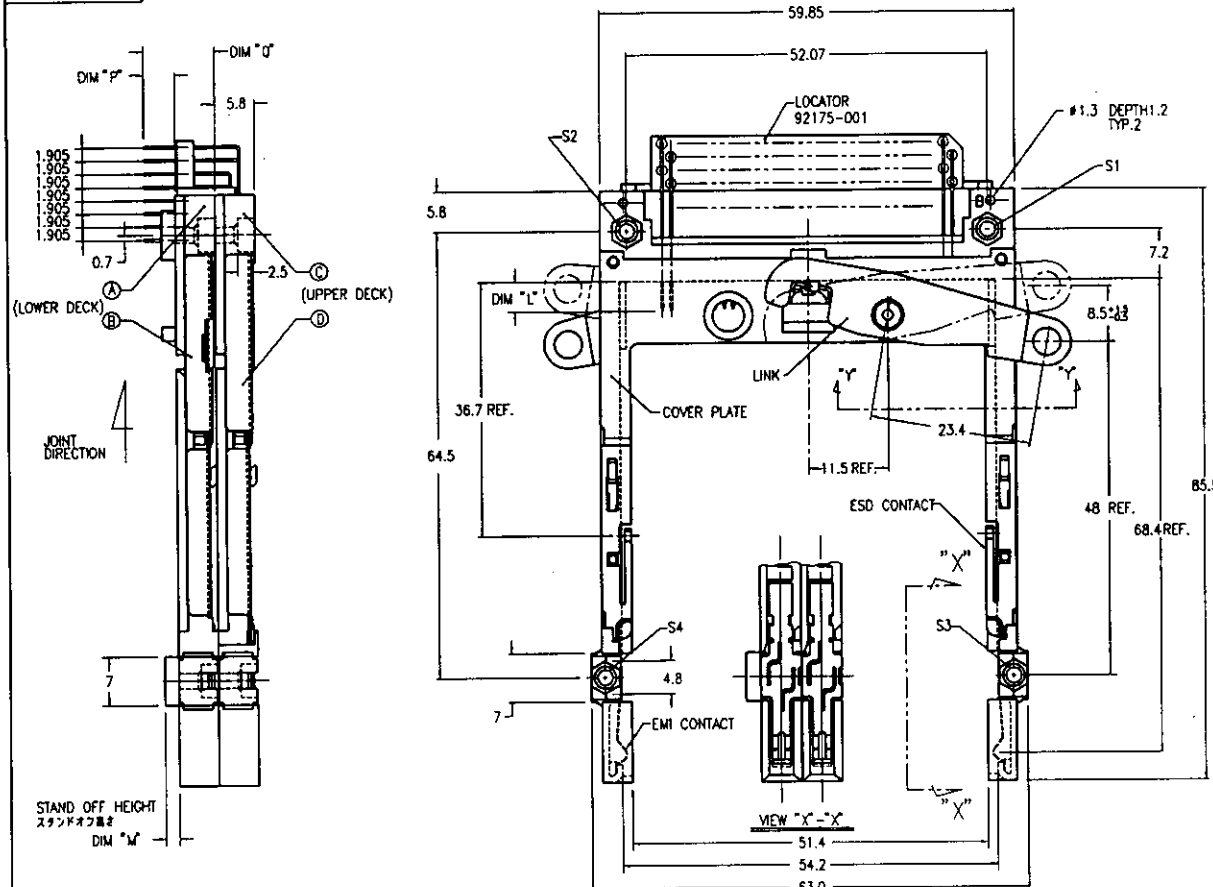
8BP DOUBLE EJECTOR TYPE I / II / III
NON-PUSH ROD

SCALE: 2/1 C
REV: 1/1
DATE: 1/1/79
PART NO: 92788
REV: 1/1
BY: B

DO NOT SCALE PRINT THIS INFORMATION IS CONFIDENTIAL AND IS CONSIDERED TO YOU ON CONDITION THAT NO FURTHER DISCLOSURE IS MADE BY YOU TO OTHER THAN BERG PERSONNEL WITHOUT WRITTEN AUTHORIZATION FROM BERG ELECTRONICS JAPAN INC.

PRODUCT NO.
92788-500
92788-520

REVISIONS				
REV	DESCRIPTION	ECN	BY	DATE
A	RELEASED	J30023	N.T	11/18/93
B	REVISED	J50088	M.KI	6/2/96

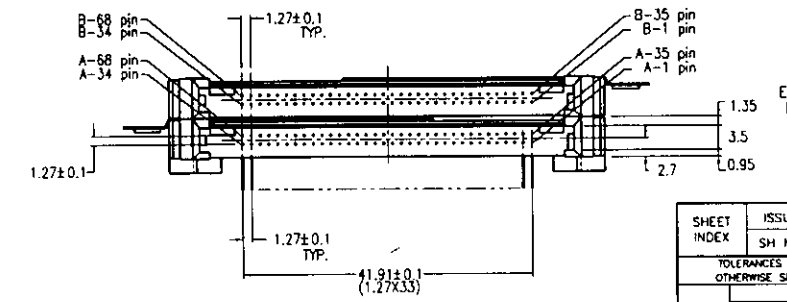
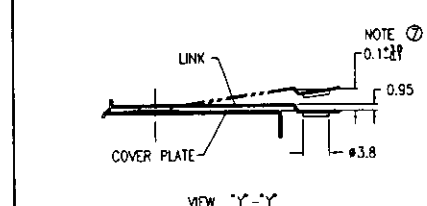
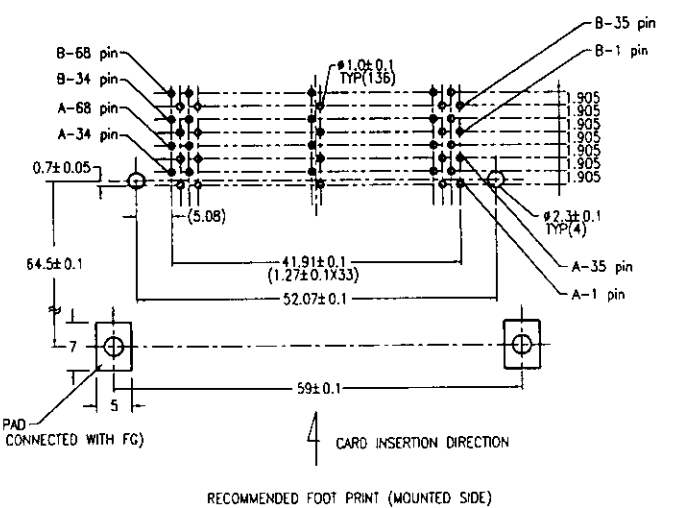


NOTE

NOTE

- EJECT FORCE 3.5Kg MAX.
- ASSY PROCESS
 - TO MOUNT PART ①, ② ON PWB WITH SCREW (S1,S2) AND SOLDER.
 - TO JOINT PART ③, ④ INTO PART ⑤, ⑥ THEN FIX PART ⑦, ⑧ WITH 2 SCREWS (S3,S4).
- EJECT TRAVEL 8.0mm
- MATERIAL
 - PART ①, ② (HEADER ASSY)
 - HOUSING : LCP UL94V-0 NATURAL
 - LOCATOR : G.F. 6.6 NYLON UL94V-0 BLACK
 - PIN : PHOSPHOR BRONZE
 - PART ③, ④ (EJECT MECHANISM ASSY)
 - GUIDE : POLYPHTHARAMID UL94V-0 BLACK
 - PLATE : STAINLESS
 - EMI CONTACT : PHOSPHOR BRONZE
- FINISH (PIN)
 - UNDER PLATING : 0.5 μm MIN. Ni
 - CONTACT AREA : 0.1 μm MIN. Au OVER 0.5 μm MIN. Pd-Ni
 - SOLDER TAIL : 2.5 μm MIN. Sn-Pb
- DIM "L"

4.25±0.1	3.5±0.1	5.0±0.1
OTHERS	36.67	38.168
- DIM 0.1±0.1 SHOULD BE 0.1±0.1 (LOWER DECK) AND 0.1±0.1 (UPPER DECK) AFTER ASSEMBLING WITH YOUR PUSH OR SLIDE BUTTON.
- GENERAL TOLERANCE : ±0.3
- SEE SHEET 1 REGARDING COMPONENTS

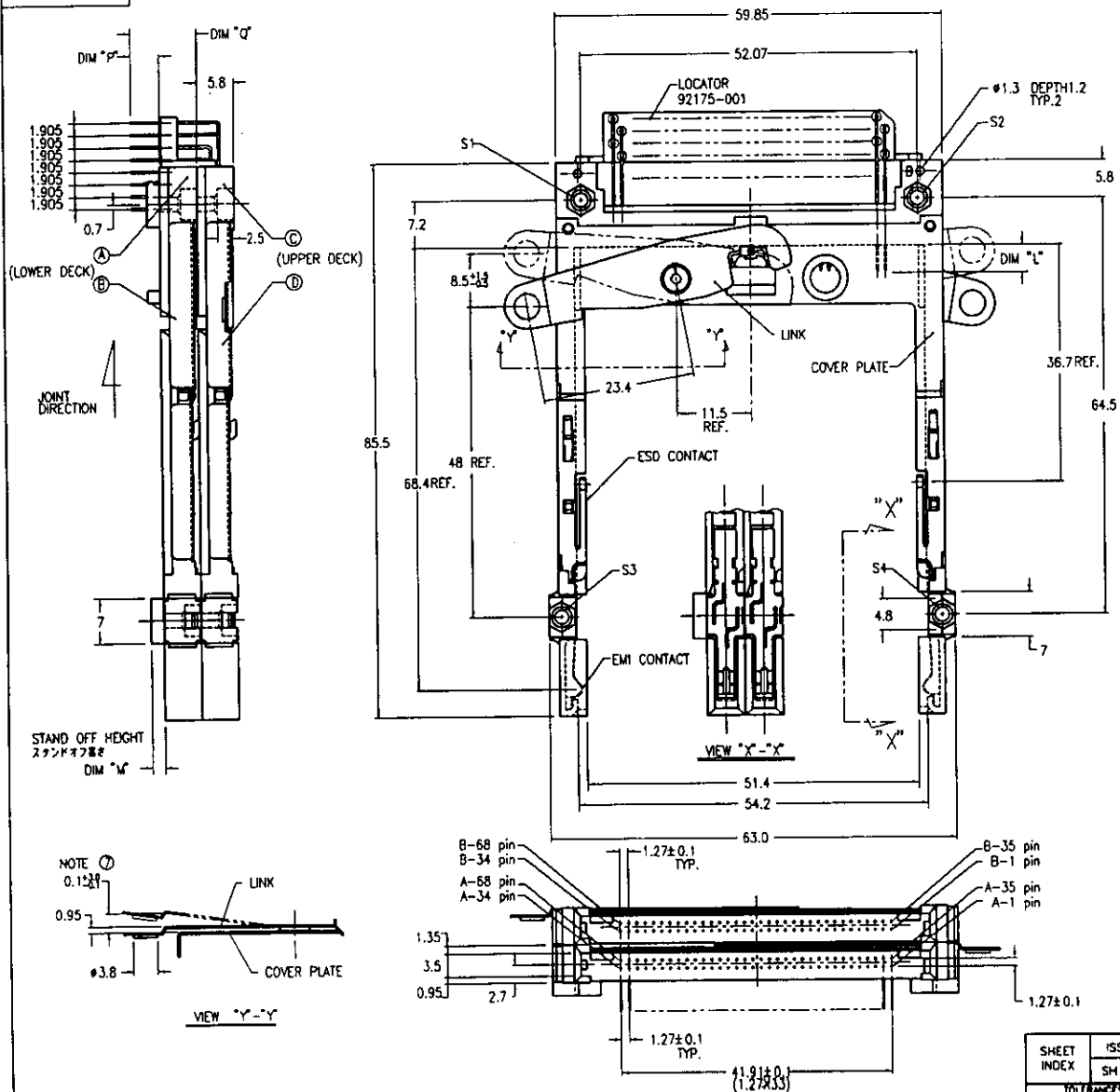


SHEET INDEX	ISSUE	MAT	OR	DATE	CUSTOMER	TITLE	SCALE	SIZE	DWG. NO.	REV	SHEET
	SH NO.		ENG	8/2/95		8BP DOUBLE EJECTOR TYPE 1/1/1		C	92788	B	60F
TOLERANCES UNLESS OTHERWISE SPECIFIED		SEE NOTE ④	DATE	8/2/95	NON-PUSH ROD						
LINEAR		SEE NOTE ⑤	DATE	9/13/95	NON-ANGLE PROD						
ANGLES			DATE	9/13/95							

DO NOT SCALE PRINT THIS INFORMATION IS CONFIDENTIAL AND IS DISCLOSED TO YOU ON CONDITION THAT NO FURTHER DISCLOSURE IS MADE BY YOU TO OTHER THAN BERG PERSONNEL WITHOUT WRITTEN AUTHORIZATION FROM BERG ELECTRONICS JAPAN INC.

PRODUCT NO.
92788-600
92788-620

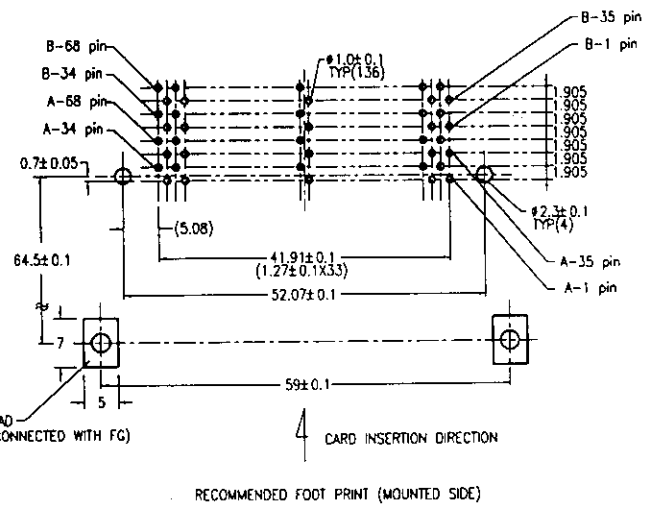
REVISIONS				
REV	DESCRIPTION	ECN	BY	DATE
A	RELEASED	J30044	N.T.	1/14/79
B	REVISED	J50086	M.K.	6/7/79



NOTE
1. EJECT FORCE 3.5Kg MAX.
2. ASSY PROCESS
2.1 TO MOUNT PART ②, ③ ON PWB WITH SCREW (S1,S2) AND SOLDER.
2.2 TO JOINT PART ④, ⑤ INTO PART ③, ⑥ THEN FIX PART ③, ⑥ WITH 2 SCREWS (S3,S4).
3. EJECT TRAVEL 8.0mm
④ MATERIAL
4.1 PART ②, ③ (HEADER ASSY)
HOUSING : LCP UL94V-0 NATURAL
LOCATOR : G.F. 6.6 NYLON UL94V-0 BLACK
PIN : PHOSPHOR BRONZE
4.2 PART ④, ⑤ (EJECT MECHANISM ASSY)
GUIDE : POLYPHTHARAMID UL94V-0 BLACK
PLATE : STAINLESS
EMI CONTACT : PHOSPHOR BRONZE
⑥ FINISH (PIN)
UNDER PLATING : 0.5 μm MIN. Ni
CONTACT AREA : 0.1 μm MIN. Au OVER 0.5 μm MIN. Pd-Ni
SOLDER TAIL : 2.5 μm MIN. Sn-Pb
6. DIM "L"

4.25±0.1	3.5±0.1	5.0±0.1
OTHERS	36.87	33.1±0.2

⑦ DIM 0.1±0.1 SHOULD BE 0.1±0.1 (LOWER DECK) AND 0.1±0.1 (UPPER DECK) AFTER ASSEMBLING WITH YOUR PUSH OR SLIDE BUTTON.
8. GENERAL TOLERANCE : ±0.3
9. SEE SHEET 1 REGARDING COMPONENTS



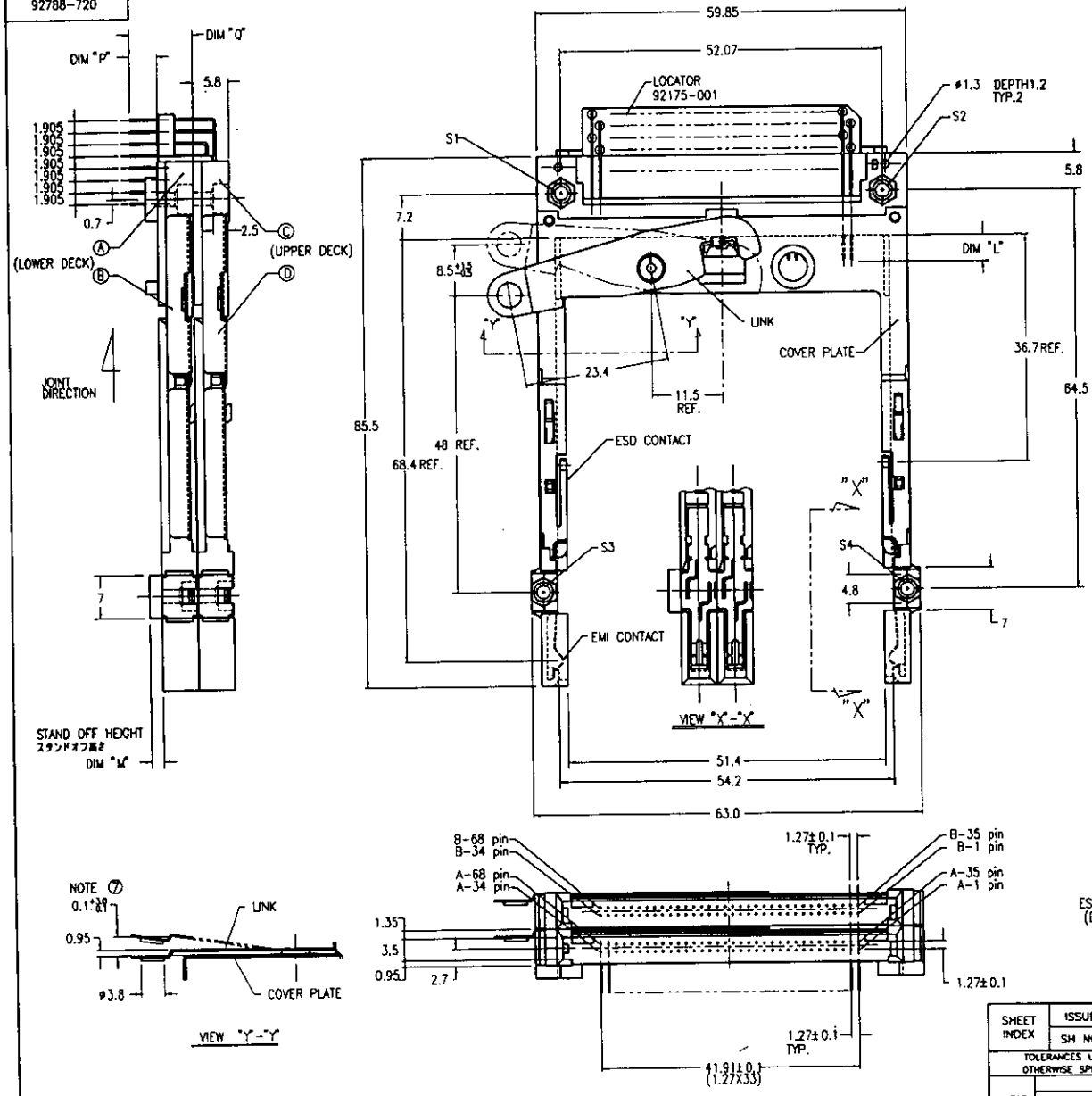
SHEET INDEX	ISSUE SH NO.	MAT	DR	DATE	CUSTOMER COPY	TITLE
		SEE NOTE ①	S. Omada	6/2/79		68P DOUBLE EJECTOR TYPE I / I / III NON-PUSH ROD
		FINISH	H. Kojima	6/2/79		
		SEE NOTE ②				

DATE	REV	BY	CHK	APP	UNIT	REV	DATE
2/1	C					B	7or

DO NOT SCALE. PRINTING INFORMATION IS CONFIDENTIAL AND IS DISCLOSED TO YOU ON CONDITION THAT NO FURTHER DISCLOSURE IS MADE BY YOU TO OTHER THAN BERG PERSONNEL WITHOUT WRITTEN AUTHORIZATION FROM BERG ELECTRONICS (JAPAN) INC.

PRODUCT NO.
92788-700
92788-720

REVISIONS				
REV	DESCRIPTION	ECN	BY	DATE
A	RELEASED	J30044	N.T.	1/14/93
B	REVISED	J50086	M.K.	4/2/95



NOTE

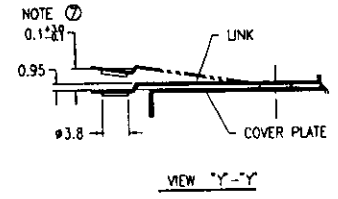
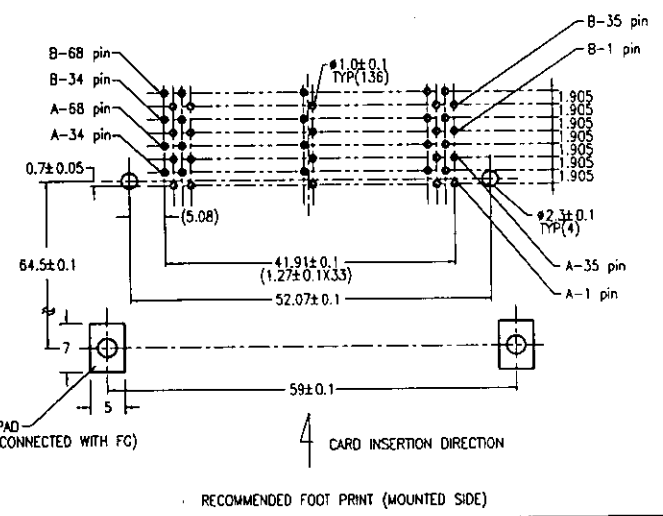
- EJECT FORCE 3.5kg MAX.
- ASSY PROCESS
 - TO MOUNT PART ②, ③ ON PWB WITH SCREW (S1,S2) AND SOLDER.
 - TO JOINT PART ④, ⑤ INTO PART ②, ③ THEN FIX PART ②, ③ WITH 2 SCREWS (S3,S4).
- EJECT TRAVEL 8.0mm
- MATERIAL
 - PART ②, ③ (HEADER ASSY)
 - HOUSING : LCP UL94V-0 NATURAL
 - LOCATOR : G.F. 6.6 NYLON UL94V-0 BLACK
 - PIN : PHOSPHOR BRONZE
 - PART ④, ⑤ (EJECT MECHANISM ASSY)
 - GUIDE : POLYPHTHAMID UL94V-0 BLACK
 - PLATE : STAINLESS
 - EMI CONTACT : PHOSPHOR BRONZE
- FINISH (PIN)
 - UNDER PLATING : 0.5μm MIN. Ni
 - CONTACT AREA : 0.1μm MIN. Au OVER 0.5μm MIN. Pd-Ni
 - SOLDER TAIL : 2.5μm MIN. Sn-Pb
- DIM "L"

4.25±0.1	3.5±0.1	5.0±0.1
OTHERS	36.67	36.51.00

② DIM 0.1±0.1 SHOULD BE 0.1±0.1 (LOWER DECK) AND 0.1±0.1 (UPPER DECK) AFTER ASSEMBLING WITH YOUR PUSH OR SLIDE BUTTON.

8. GENERAL TOLERANCE : ±0.3

9. SEE SHEET 1 REGARDING COMPONENTS

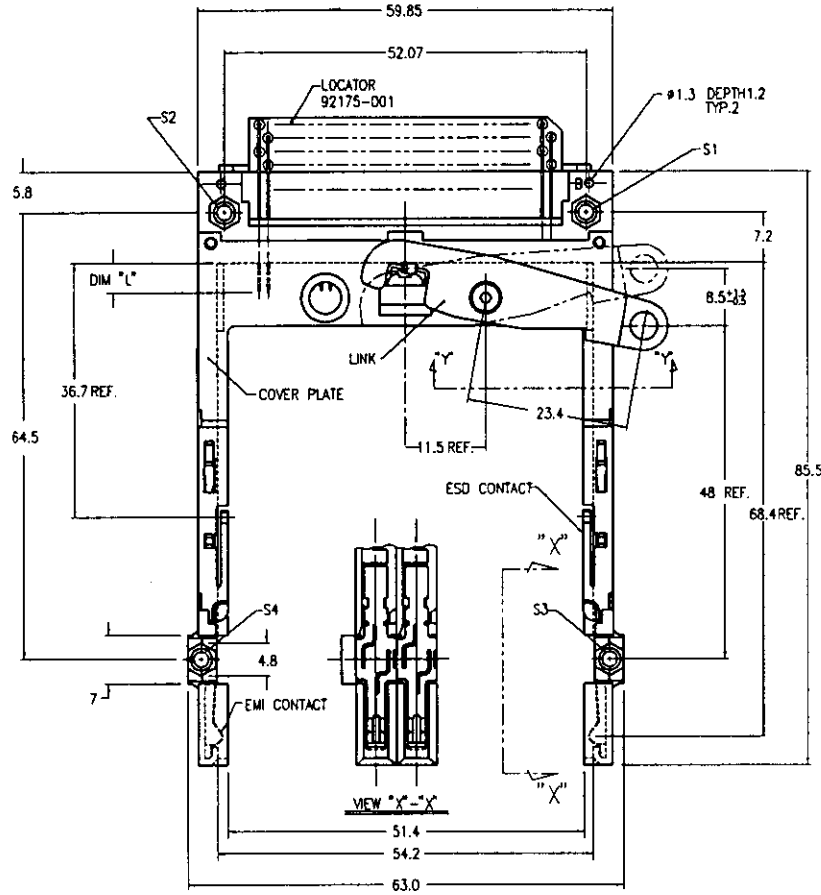
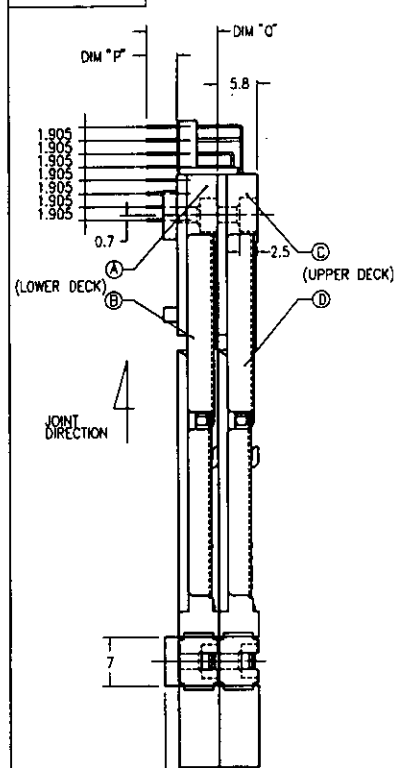


SHEET INDEX	ISSUE	SH NO.	MAT	DR	DATE	CUSTOMER COPY	TITLE	SCALE	SIZE	DWG. NO.	REV	SHEET
				J. Omata	8/2/95		88P DOUBLE EJECTOR TYPE 1/1		C	92788	B	18 OF
TOLERANCES UNLESS OTHERWISE SPECIFIED		SEE NOTE ④	ENGR	M. Kojima	8/2/95	UNIT	NON-PUSH ROD					
LINEAR	FINISH	SEE NOTE ⑤	CHK	S. Sato	8/11/95							
			APPRO	K. Sato	9/13/95							

DO NOT SCALE PRINT THIS INFORMATION IS CONFIDENTIAL AND IS DISCLOSED TO YOU ON CONDITION THAT NO FURTHER DISCLOSURE IS MADE BY YOU TO OTHER THAN BERG PERSONNEL WITHOUT WRITTEN AUTHORIZATION FROM BERG ELECTRONICS JAPAN INC.

PRODUCT NO.
92788-800
92788-820

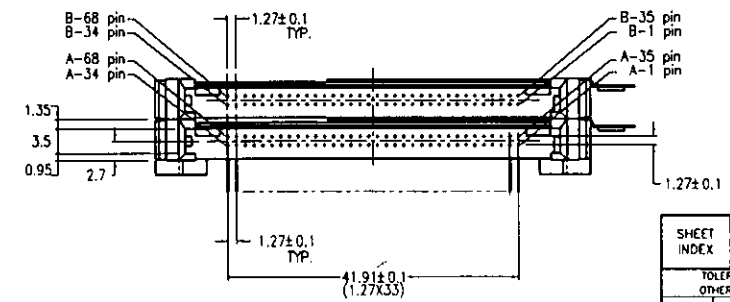
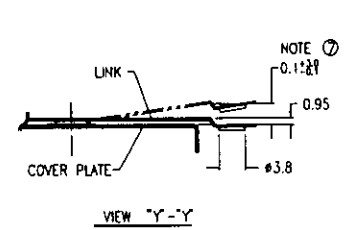
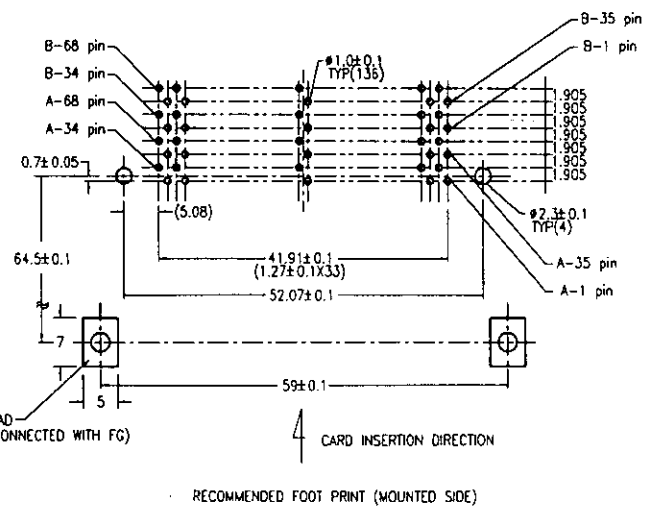
REVISIONS				
REV	DESCRIPTION	ECN	BY	DATE
A	RELEASED	J30044	N.T.	1/14/93
B	REVISED	J50086	M.K.	2/2/96



NOTE

- EJECT FORCE 3.5kg MAX.
- ASSY PROCESS
 - TO MOUNT PART ②, ③ ON PWB WITH SCREW (S1,S2) AND SOLDER.
 - TO JOINT PART ②, ③ INTO PART ①, ④ THEN FIX PART ②, ③ WITH 2 SCREWS (S3,S4).
- EJECT TRAVEL 8.0mm
- MATERIAL
 - PART ②, ③ (HEADER ASSY)
 - HOUSING : LCP UL94V-0 NATURAL
 - LOCATOR : G.F. 6.6 NYLON UL94V-0 BLACK
 - PIN : PHOSPHOR BRONZE
 - PART ②, ③ (EJECT MECHANISM ASSY)
 - GLIDE : POLYPHTHARAMID UL94V-0 BLACK
 - PLATE : STAINLESS
 - EMI CONTACT : PHOSPHOR BRONZE
- FINISH (PIN)
 - UNDER PLATING : 0.5 μm MIN. Ni
 - CONTACT AREA : 0.1 μm MIN. Au OVER 0.5 μm MIN. Pd-Ni
 - SOLDER TAIL : 2.5 μm MIN. Sn-Pb
- DIM "L"

4.25±0.1	3.5±0.1	5.0±0.1
OTHERS	36.67	35.18
- DIM 0.1±0.1 SHOULD BE 0.1±0.1 (LOWER DECK) AND 0.1±0.1 (UPPER DECK) AFTER ASSEMBLING WITH YOUR PUSH OR SLIDE BUTTON.
- GENERAL TOLERANCE : ±0.3
- SEE SHEET 1 REGARDING COMPONENTS



DR-0034 REV. C
 (DO NOT SCALE PRINT) THIS INFORMATION IS CONFIDENTIAL AND IS CONVEYED TO YOU ON THE UNDERSTANDING THAT NO FURTHER DEVELOPMENT IS MADE BY YOU OR OTHER THAN BERG PERSONNEL, WITHOUT WRITTEN AUTHORIZATION FROM BERG ELECTRONICS JAPAN INC.

SHEET INDEX	ISSUE	DATE		CUSTOMER COPY	
	SH. NO.	5/2/96		④	
TOLERANCES UNLESS OTHERWISE SPECIFIED		MAT	DR	DATE	
		ENGR	J. Omada	5/2/96	
		CHK	H. Kojima	5/7/96	
		APPR	K. Suga	5/11/96	
LINEAR		UNIT	MM	SCALE	2/1
ANGLES		TYP.		SIZE	C
		DWG. NO.		REV	92788
				BY	B
				DATE	9/96

BERG ELECTRONICS

88P DOUBLE EJECTOR TYPE 1/1/1/1
 NON-PUSH ROD

SCALE: 2/1 C DWG. NO. 92788 REV SHEET B 9/96