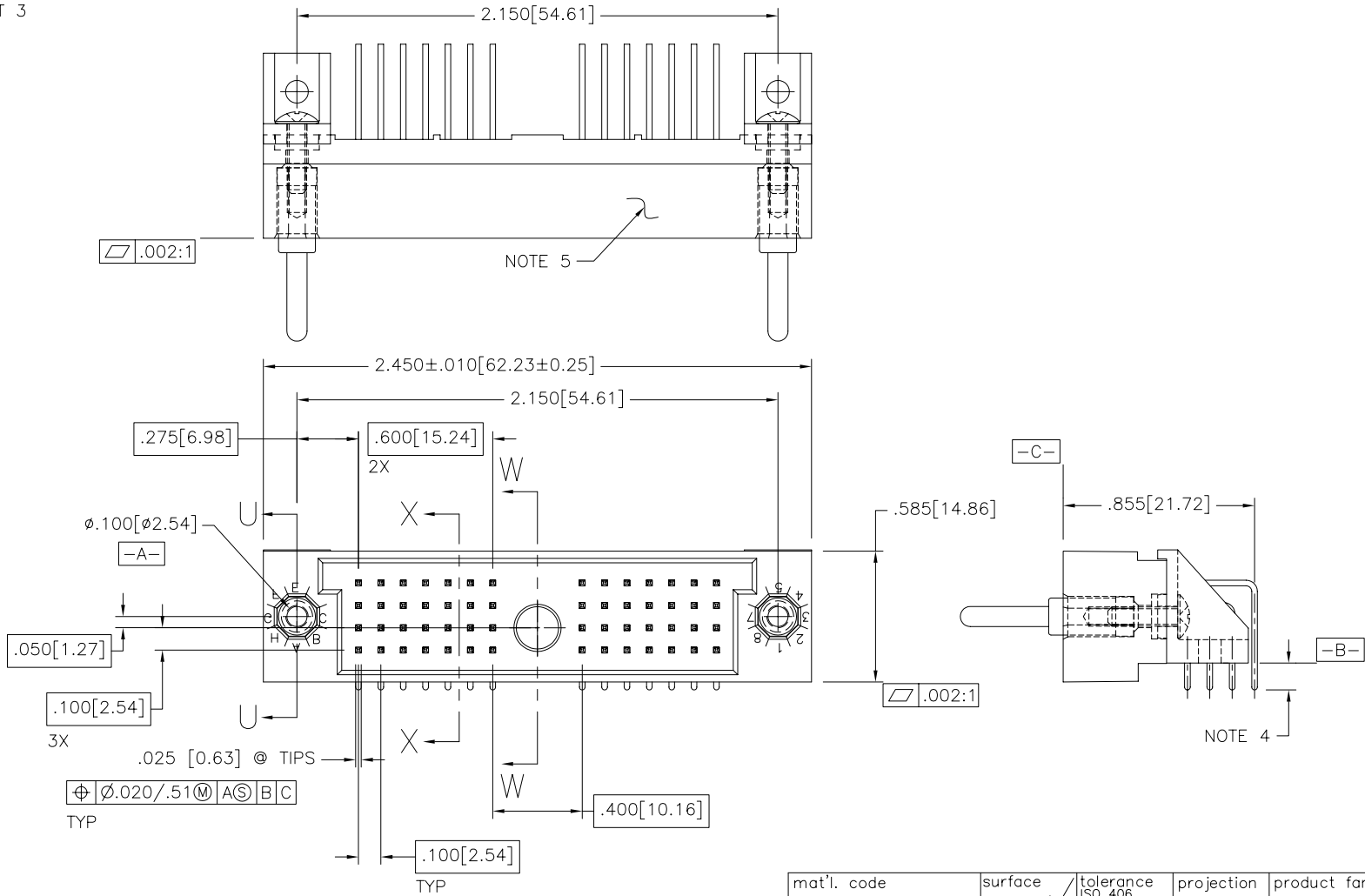


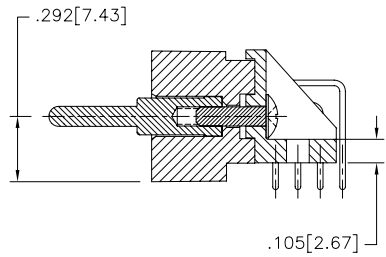
PRODUCT NUMBER	DESCRIPTION
51448-XX001	STANDARD
51448-XX001LF	LEAD-FREE
SEE SHEET 3	



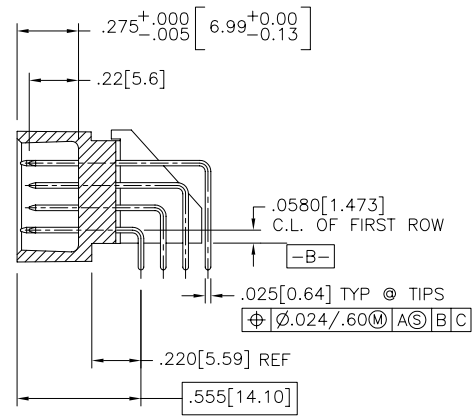
mat'l. code		surface		tolerance		projection		product family	
NOTE 2		ISO 1302 ✓		ISO 406		ISO 1101		HPC	
ltr		ecn no		date		tolerances unless otherwise specified		title	
A	v80388	MSC	3/6/98	angles		.xx±.01/.3		4 ROW R/A HEADER ASS'Y	
B	v80860	MSC	5/15/98	linear		.xxx±.005/.13		S.T., 0 G.P. 1 P.P.	
C	v81237	MSC	6/19/98	0'±2'		.xxxx±.0020/.051		scale 1:1	
D	v00264	JWS	1/27/00	dr	M.CLOUSER	2/25/98		dwg no	
E	v05-0508	LP	7/18/05	enr	J.AFTON	2/25/98		sheet 1 of 3 size	
F	w06-0283	MHT	7/27/06	chr	J.AFTON	2/25/98		51448	
sheet		revision		F		F		A3	
index		sheet		1		2		3	
				4		5		6	

FCI  
FCIconnect.com  
Copyright FCI

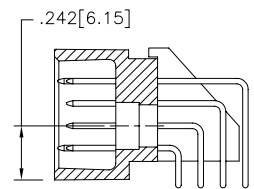
PRODUCT NUMBER  
SEE SHEET 3



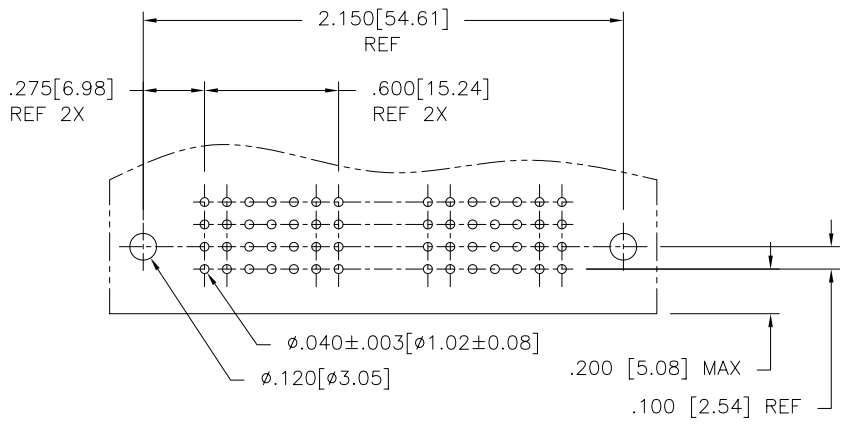
SECTION U-U



SECTION X-X



SECTION W-W



RECOMMENDED PCB LAYOUT  
(ALL HOLES LOCATED ON .100/2.54 GRID  
UNLESS OTHERWISE SPECIFIED)

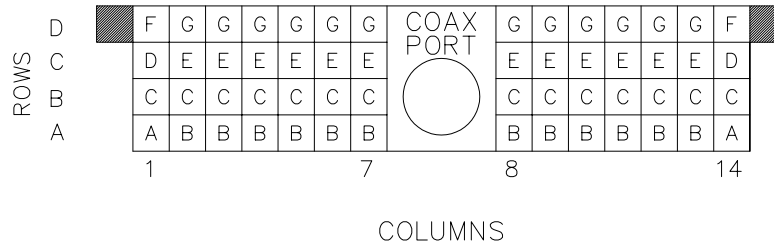
NOTES:

- THIS PRODUCT IS CONFIGURED WITH 14 COLUMNS.
- HOUSING MATERIAL: GLASS AND MINERAL FILLED HIGH TEMP THERMO PLASTIC. FLAME RETARDANT PER UL94V-0. COLOR: BLACK. PIN MATERIAL: PHOS. BRONZE.
- CONTACT AREA PLATING:  
7 = 60u"/1.52u GXT
- TAIL LENGTH OPTIONS:  
J = .120/3.05
- MANUFACTURE'S NAME, P/N, AND LOT CODE TO APPEAR ON THIS SURFACE PER BUS-12-108.
- MANUFACTURE AS PER BUS-24-004.
- HOUSING CONFIGURED FOR CABLE COAX, P/N 77427-112.
- THIS PRODUCT (WITH "LF" SUFFIX) MEETS EUROPEAN UNION DIRECTIVES AND OTHER COUNTRY REGULATIONS AS DESCRIBED IN GS-12-008.
- THIS HOUSING WILL WITHSTAND EXPOSURE TO 260 DEGREES C PEAK TEMPERATURE FOR 10 - 30 SECONDS IN A CONVECTION, INFRA-RED OR VAPOR PHASE REFLOW OVEN.

mat'l. code		surface		tolerance		projection		product family	
NOTE 2		ISO 1302 ✓		ISO 406		ISO 1101		HPC	
ltr	ecn	no	dr	date	tolerances unless otherwise specified				
F					angles	linear	.xx±.01/.3	title	
					0°±2'		.xxx±.005/.13	4 ROW R/A HEADER ASS'Y	
							.xxxx±.0020/.051	S.T., 0 G.P. 1 P.P.	
			dr	M.CLOUSER	2/25/98	scale 1:1		sheet 2 of 3 size	
			enr	J.AFTON	2/25/98			51448	
			chr	J.AFTON	2/25/98			A3	
			appd	S.CLARK	3/6/98			type Product Customer Drawing	
sheet index	revision sheet								

Copyright FCI  
FCIconnect.com

PRODUCT NO.	ITEM	SIZE-4X14+1 COAX	NUMBER OF POS. 56+1 COAX	POSITIONS LOADED-56	
		PLATING--60u"/1.52u GXT	TAIL STYLE		
		QTY.	MATING LENGTH	TAIL LENGTH	PIN LENGTH
51448-XX001	A	2	.260/6.60	.120/3.05	.704/17.88
	B	12	.220/5.59	.120/3.05	.664/16.87
	C	14	.220/5.59	.120/3.05	.864/21.95
	D	2	.180/4.57	.120/3.05	1.024/26.01
	E	12	.220/5.59	.120/3.05	1.064/27.03
	F	2	.260/6.60	.120/3.05	1.304/33.12
	G	12	.220/5.59	.120/3.05	1.264/32.11
51448-XX001LF (LEAD-FREE)	A	2	.260/6.60	.120/3.05	.704/17.88
	B	12	.220/5.59	.120/3.05	.664/16.87
	C	14	.220/5.59	.120/3.05	.864/21.95
	D	2	.180/4.57	.120/3.05	1.024/26.01
	E	12	.220/5.59	.120/3.05	1.064/27.03
	F	2	.260/6.60	.120/3.05	1.304/33.12
	G	12	.220/5.59	.120/3.05	1.264/32.11



SPECIAL NOTES FOR 51448-XX001 AND XX001LF

- COLUMN 1, ROW A IS DESIGNATED AS PIN 1, AS VIEWED FROM THE MATING FACE.

mat'l. code		surface		tolerance		projection		product family	
NOTE 2		ISO 1302 ✓		ISO 406 ISO 1101		⊕		HPC	
ltr	ecn	no	dr	date	tolerances unless otherwise specified			title	
F					angles	linear	.xx±.01/.3	4 ROW R/A HEADER ASS'Y	
					0'±2'		.xxx±.005/.13	S.T., 0 G.P. 1 P.P.	
							.xxxx±.0020/.051	scale 1:1	
					dr	M.CLOUSER	2/25/98	dwg no	
					enr	J.AFTON	2/25/98	sheet 3 of 3 size	
					chr	J.AFTON	2/25/98	51448 A3	
					appd	S.CLARK	3/6/98	type Product Customer Drawing	
sheet index	revision sheet								