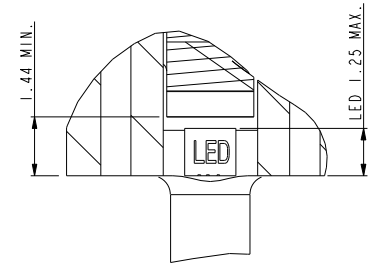
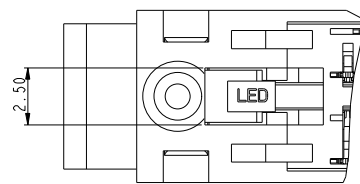


28.60 REF (FOR 25.4mm MODULE HEIGHT)  
21.50 REF (FOR 18.3mm MODULE HEIGHT)

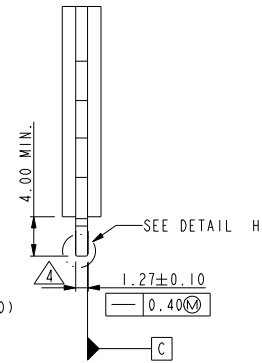
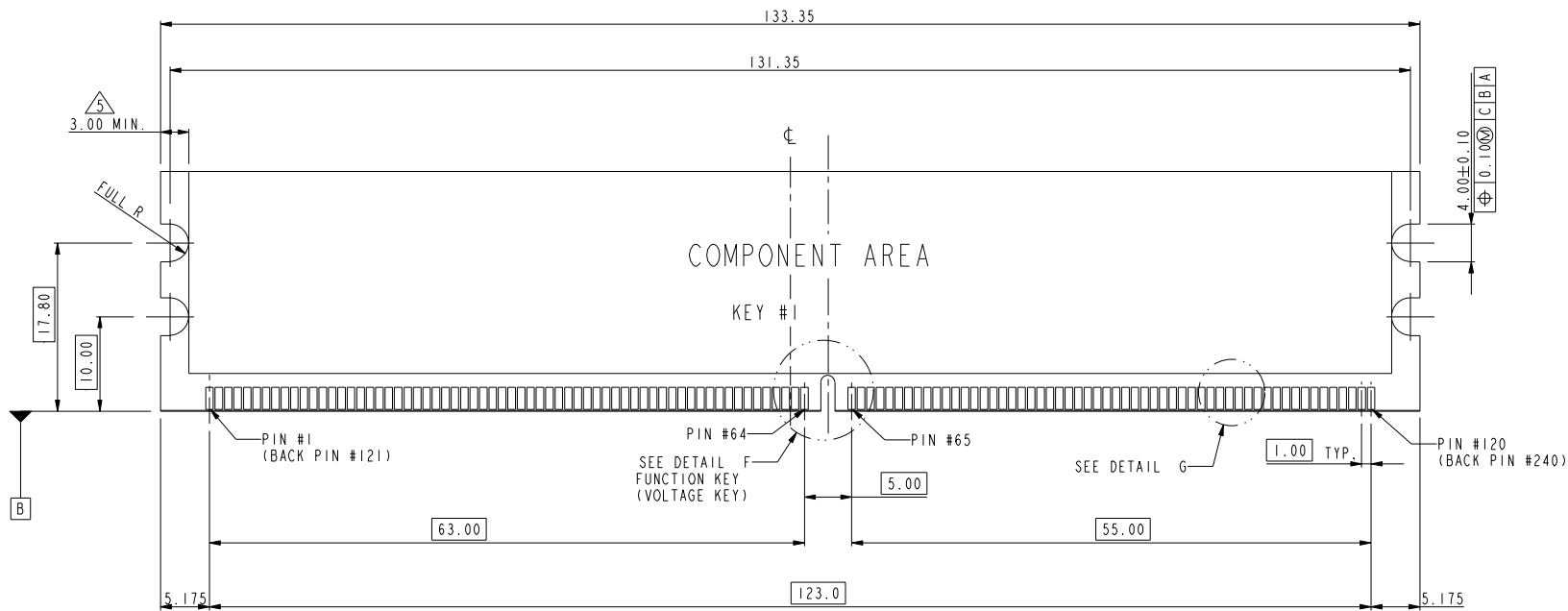


Mark with 10083950 REV. A in area indicated by X.....			
rev	ecn no	dr	date
A	DG08-0017	CS	11/01/08*

www.fciconnect.com				surface	tolerance std	projection	MM	
				<input checked="" type="checkbox"/>	TOLERANCES UNLESS OTHERWISE SPECIFIED			
Dr	CHARLIE S	11/01/07	ANGULAR	0.X	± .38	size	Scale	
Eng	CHARLIE S	11/01/07	LINEAR	0.XX	± .25	A4	0.500	
Chr	HSIEH GARY	11/01/07	0° ±2°	0.XXX	± .13	ECN	*	
Appr	JOSEPH HSIA	11/01/07	Product family	Spec ref				*
FCI				title		dwg no		
				DDR 11 240P PRESS-FIT		10083950		
				LOWER LATCH		Rev. A		
				catalog		CUSTOMER		

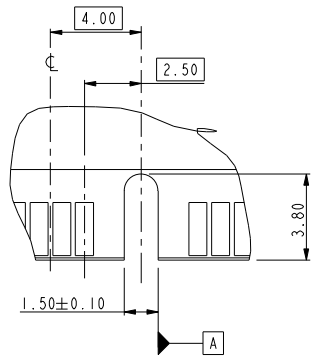


Copyright FCI.

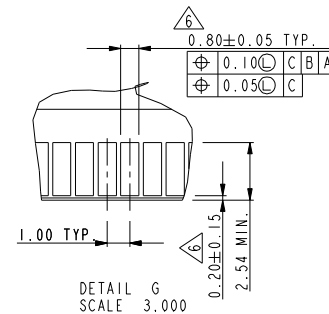


DETAIL H  
SCALE 3.000

REFERENCE ONLY - SEE JEDEC SPEC MO-237 FOR DETAIL



DETAIL F  
KEY POSITION #1  
TYPE "C"



DETAIL G  
SCALE 3.000

- NOTE:  
 1. MATERIAL : FR-4.  
 2. FINISH: SOLDER MASK.  
 3. BURR: 0.08 MAX.

tolerance unless otherwise specified	
linear	.X ± .38
	.XX ± .25
	.XXX ± .13
angles	0° ± 2°

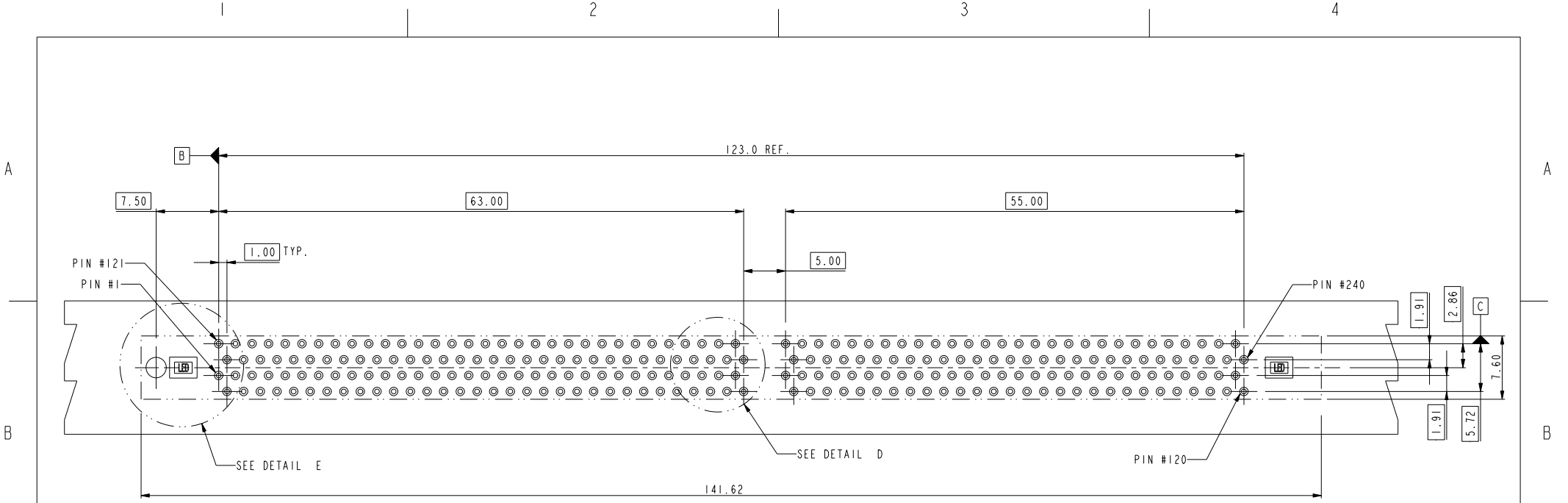
TYPE "C"	1.8 VOLTAGE
SUB KEY POS #1	DESCRIPTION

FCI	title	DDR II 240P PRESS-FIT	dwg no	10083950	Rev.	A
	catalog	LOWER LATCH		CUSTOMER		sheet 2 of 4

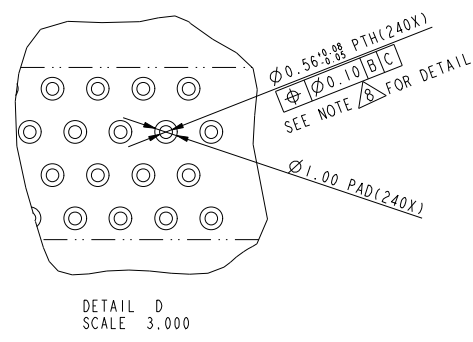
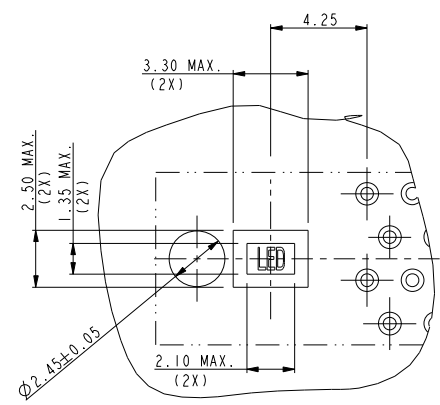
PDM: Rev-A

STATUS: Released

Printed: Jul 28, 2010



RECOMMEND CIRCUIT BOARD HOLE LAYOUT



tolerance unless otherwise specified	
linear	.X ± .38
	.XX ± .25
	.XXX ± .13
angles	0° ± 2°

	<b>DDR II 240P PRESS-FIT</b> LOWER LATCH	dwg no <b>10083950</b>	Rev. <b>A</b>
	catalog	<b>PDM: Rev-A</b>	STATUS <b>Released</b>

sheet 3 of 4  
Printed: Jul 28, 2010

Copyright FCI.

10083950-□ □ □ □

STYLE: MECHANICAL KEYING  
I : 1.8 VOLT

REVISE  
0

TAIL LENGTH

CODE	DIM. "D"
0	3.30
1	3.70
2	4.20

PLATING

CODE	CONTACT	TAIL AREA	UNDERPLATE	CODE	CONTACT	TAIL AREA	UNDERPLATE
2	15u" (0.38um) MIN. GOLD	35u"~100u" Tin PLATING	50u" (1.27um) MIN. NICKEL OVERALL	2B	15u" (0.38um) MIN. GOLD	35u"~100u" Tin/Lead PLATING	50u" (1.27um) MIN. NICKEL OVERALL
3	30u" (0.76um) MIN. GOLD			3B	30u" (0.76um) MIN. GOLD		
4	3u" (0.076um) MIN. GOLD			4B	3u" (0.076um) MIN. GOLD		
6	15u" (0.38um) MIN. GOLD (LUBRICATED)	35u"~100u" Tin PLATING	50u" (1.27um) MIN. NICKEL OVERALL	6B	15u" (0.38um) MIN. GOLD (LUBRICATED)	35u"~100u" Tin/Lead PLATING	50u" (1.27um) MIN. NICKEL OVERALL
7	30u" (0.76um) MIN. GOLD (LUBRICATED)			7B	30u" (0.76um) MIN. GOLD (LUBRICATED)		
8	3u" (0.076um) MIN. GOLD (LUBRICATED)			8B	3u" (0.076um) MIN. GOLD (LUBRICATED)		
2LF	15u" (0.38um) MIN. GOLD	35u"~100u" Tin PLATING	50u" (1.27um) MIN. NICKEL OVERALL				
3LF	30u" (0.76um) MIN. GOLD						
4LF	3u" (0.076um) MIN. GOLD						
6LF	15u" (0.38um) MIN. GOLD (LUBRICATED)	35u"~100u" Tin PLATING	50u" (1.27um) MIN. NICKEL OVERALL				
7LF	30u" (0.76um) MIN. GOLD (LUBRICATED)						
8LF	3u" (0.076um) MIN. GOLD (LUBRICATED)						

COLOR OF HOUSING AN EJECTOR

- 0 : BLACK HOUSING + IVORY EJECTOR
- 1 : BLACK HOUSING + AMBER EJECTOR
- 2 : BLACK HOUSING + BLACK EJECTOR
- 3 : BLUE HOUSING + IVORY EJECTOR
- 4 : BLUE HOUSING + AMBER EJECTOR

NOTE:

1. MATERIAL:  
HOUSING: HIGH PERFORMANCE RESINS, GLASS FILLED UL94V-0 RATED,  
COLOR: BLACK.  
EJECTOR: HIGH PERFORMANCE RESINS, GLASS FILLED UL94V-0 RATED,  
COLOR: NATURAL.  
TERMINAL: COPPER ALLOY.
2. FCI LOGO TO BE APPROXIMATELY LOCATED AS SHOWN ON PRINT.
3. PRODUCT SPECIFICATION: GS-12-273
- △ CARD THICKNESS APPLIES ACROSS TABS AND INCLUDES PLATING AND / OR METALIZATION.
- △ 3.00mm MINIMUM APPLIES TO BOTH 4.00mm WIDE NOTCH LENGTH AND COMPONENT KEEP-OUT AREA.
- △ LEADING EDGE OF CONTACT PADS SPECIFIED BY THE KEEP OUT ZONE SHALL BE FREE OF BURRS AND EXTERNAL TIE BARS.  
FOR OPTIMUM PERFORMANCE, THE TIE BAR IS TO BE ON AN INTERNAL LAYER SO THAT THE REMNANT CANNOT CAUSE CONTACT DAMAGE.
7. PACKAGING SPECIFICATION: GS-14-528.
- △ ALL PTH SHOULD BE 0.66mm DIA DRILLED AND 0.025mm MIN. ELECTRO-DEPOSITED COPPER THK ON THROUGH HOLE WALL.
9. THIS PRODUCT MEETS EUROPEAN UNION DIRECTIVES AND OTHER COUNTRY REGULATIONS AS DESCRIBED IN GS-22-008.
10. THE HOUSING WILL WITHSTAND EXPOSURE TO 260° PEAK TEMPERATURE FOR 20 SECONDS IN A IR REFLOW OVEN.

△ DATE CODE: X X X X X X

YEAR  
DATE  
MONTH

	title	DDR 11 240P PRESS-FIT	dwg no	10083950	Rev. A
	catalog	LOWER LATCH		CUSTOMER	

PDM: Rev:A

STATUS: Released

sheet 4 of 4

Printed: Jul 28, 2010