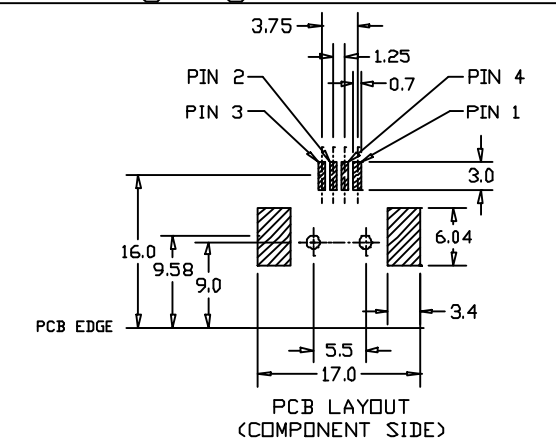
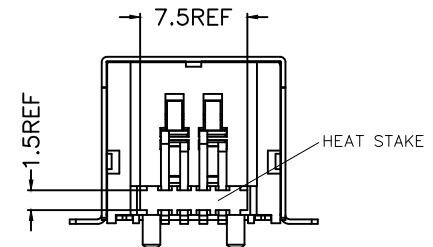
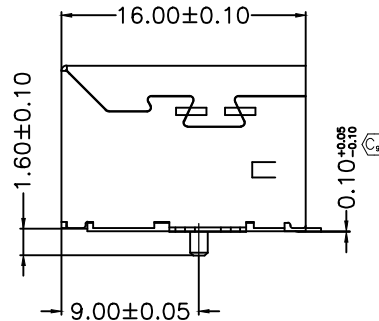
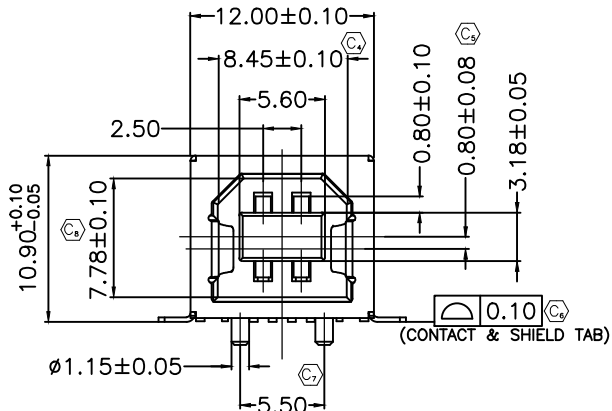
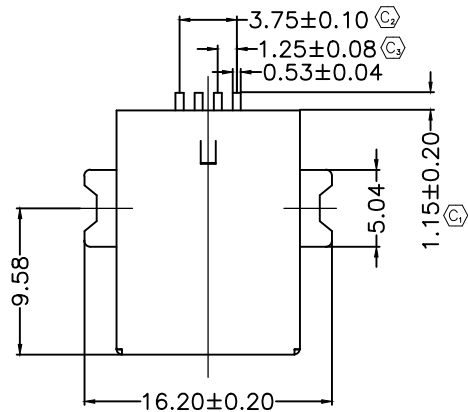


REVISION T

DO NOT SCALE FROM THIS PRINT



USB-B-S-X-X-SM-X-XX

TYPE
-B

CONFIGURATION
-S: SINGLE

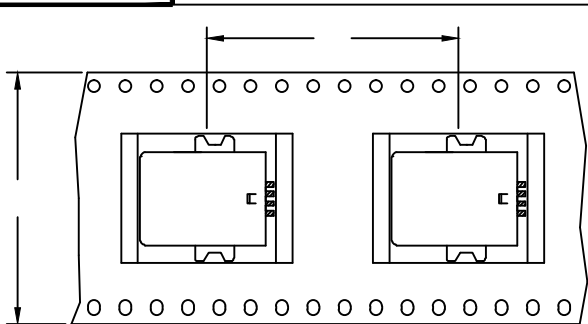
PLATING
-F: 1u" FLASH GOLD IN CONTACT AREA, MATTE TIN ON TAIL
-S: 30u" SELECTIVE GOLD IN CONTACT AREA, MATTE TIN ON TAIL

OPTIONS
-TR: TAPE AND REEL (LEAVE BLANK FOR TRAY PACKAGING)

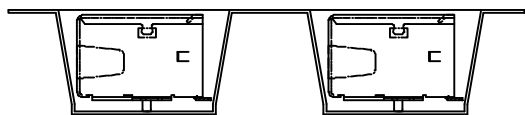
E & I OPTIONS
-R: ROHS COMPLIANT-LEAD FREE WITH HIGH TEMP INSULATOR

RA TERMINATION
-SM: SURFACE MOUNT

COLOR
-B: BLACK
-W: WHITE



USER DIRECTION OF UNREELING —
POCKET NOT DETAILED



- NOTES:
1. Ⓢ REPRESENTS CRITICAL DIMENSION.
 2. NOTE DELETED.
 3. SHIELD CHANGE TO CONTINUOUS PLATING

<p>UNLESS OTHERWISE SPECIFIED, DIMENSIONS ARE MILLIMETERS. TOLERANCES ARE: DECIMALS ANGLES</p>	<p>PROPRIETARY NOTE THIS DOCUMENT CONTAINS INFORMATION CONFIDENTIAL AND PROPRIETARY TO SAMTEC INC. AND SHALL NOT BE REPRODUCED OR TRANSFERRED TO OTHER DOCUMENTS OR DISCLOSED TO OTHERS OR USED FOR ANY PURPOSE OTHER THAN THAT FOR WHICH IT WAS OBTAINED WITHOUT THE EXPRESSED WRITTEN CONSENT OF SAMTEC INC.</p>	<p>samtec 520 PARK EAST BLVD. NEW ALBANY, IN 47150 (812) 944-6733 P.O. BOX 1147 TWX: 810-540-4085</p>
<p>DO NOT SCALE DRAWING SHEET SCALE: 1:2 INSULATOR: PA9T (RATED UL94V-0) CONTACT: PHOS BRONZE SHELL: STEEL, NICKEL PLATED MAX FLASH ALLOWED: .051 MAX GATE VESTIGE: .051 F:\DWG\EXISPRD\ASSEMBLY\10\USB\</p>		<p>DESCRIPTION: USB TYPE B RIGHT ANGLE SURFACE MOUNT DWG. NO. USB-B-S-X-X-SM-X-XX BY: J. Riley 02/06/04 SHEET 1 OF 1</p>

CODE: 55322