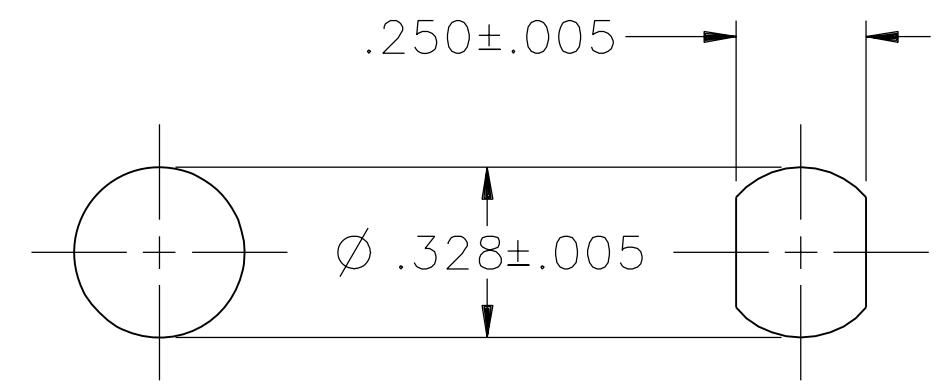
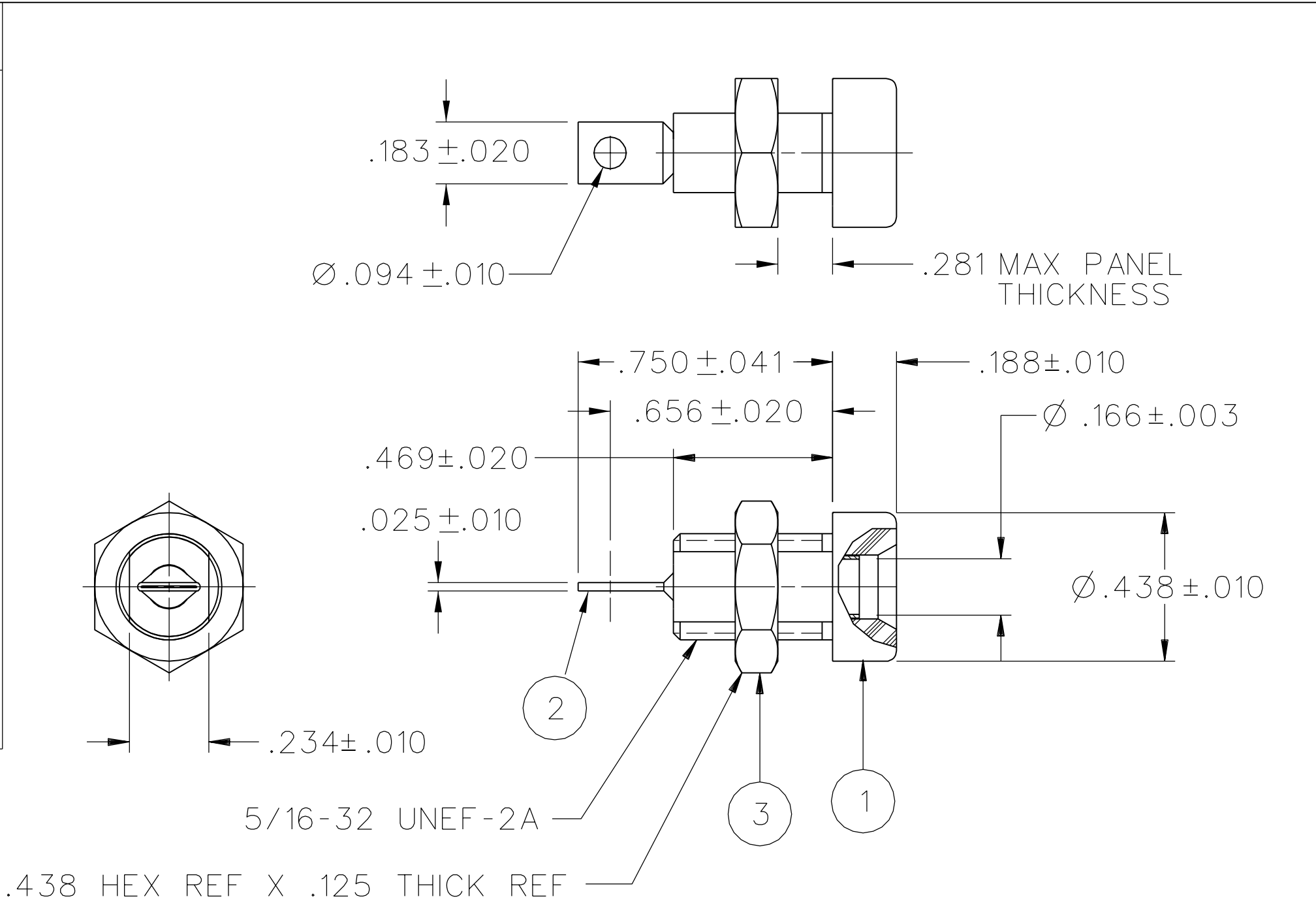


PART NUMBER	ITEM ①		ITEM ②	ITEM ③
	BODY	COLOR		
108-0901-001	NYLON	WHITE	BRASS TIN PL .0001 MIN OVER NICKEL PL .00005 MIN	BRASS NICKEL PL .0001 MIN
108-0902-001		RED		
108-0903-001		BLACK		
108-0904-001		GREEN		
108-0905-001				
108-0906-001		ORANGE		
108-0907-001		YELLOW		
108-0908-001		BROWN		
108-0909-001				
108-0910-001		BLUE		
108-0911-001				
108-0912-001		VIOLET		
108-0913-001		GRAY		
108-0914-001				
108-0915-001				
108-0916-001				
108-0917-001				
108-0918-001				
108-0919-001				
108-0920-001				



MOUNTING HOLE OPTIONS

NOTES:

SPECIFICATIONS:

ELECTRICAL:

CURRENT RATING: 15 AMPS DC MINIMUM
 DIELECTRIC WITHSTANDING VOLTAGE: 7000 VRMS MINIMUM AT SEA LEVEL
 RECOMMENDED WORKING VOLTAGE: 3500 VRMS MAXIMUM AT SEA LEVEL
 INSULATION RESISTANCE: 5000 MEGOHMS MINIMUM
 CONTACT RESISTANCE: 10 MILLIOHMS MAXIMUM
 CAPACITANCE: 2.4 pF NOMINAL

MECHANICAL:

CONTACT RETENTION IN INSULATOR FORCE: 30 LBS MINIMUM
 CONTACT RETENTION IN INSULATOR TORQUE: 2 IN OZ MINIMUM
 INSULATOR RETENTION IN .062 PANEL FORCE: NOT APPLICABLE
 INSULATOR RETENTION IN .062 PANEL TORQUE: NOT APPLICABLE
 PLASTIC MOUNTING THREAD STRIPPING TORQUE: 6 IN LB MINIMUM
 WIRE ACCEPTABILITY: 12 AWG OR SMALLER
 WIRE ATTACHMENT: SOLDER
 MATING BANANA PLUG SPRING WIDTH: .175 NOMINAL
 DURABILITY: 1000 CYCLES MINIMUM

ENVIRONMENTAL:

(MEETS OR EXCEEDS THE APPLICABLE PARAGRAPH OF MIL-PRF-39024)
 OPERATING TEMPERATURE: -55 DEG C TO 85 DEG C
 TEMPERATURE RISE AT RATED CURRENT: 10 DEG C MAXIMUM
 CORROSION: MIL-STD-1344, METHOD 1001, CONDITION B
 SHOCK: MIL-STD-1344, METHOD 2004, CONDITION G
 VIBRATION: MIL-STD-1344, METHOD 2005, CONDITION I
 HUMIDITY: MIL-STD-1344, METHOD 1002, CONDITION B

DRAWING NO.
 B - 108-0901/0920-001

0 REVISIONS

REVISED AND REDRAWN. DRAWING WAS "C" SIZE 108-0901/0920-001/020 DATED 3-30-88. SPLIT INTO 6 SEPERATE DWGS. CREATED SHEET 2.

26a 1-9-03 R H R J B 10-1-03 ECN 48696

CUSTOMER DRAWING

THIS DRAWING TO BE INTERPRETED PER ASME Y 14.5M - 1994

"μSTATION"

COMPANY CONFIDENTIAL

TOLERANCE UNLESS OTHERWISE SPECIFIED		DRAWN BY	DATE
DECIMALS	mm	RJB	12-27-02
.XX	_____	CHECKED BY	DATE
.XXX	_____		
MATL	_____	APPROVED BY	DATE
		RJB	10-1-03
FINISH	_____	RELEASE DATE	10-1-03
		U/M	INCH
		SCALE	2:1

Cinch Connectivity Solutions
 P.O. Box 1732
 Waseca, MN 56093
 1-800-247-8256

TITLE
 ASSEMBLY, BANANA JACK, INSULATED THREADED PANEL MOUNT, SOLDER TERMINAL

SHEET 2 OF 2
 DRAWING NO. B - 108-0901/0920-001