

REV.	ECN NO.	REVISIONS	DRN.	CKD.	APP.	DATE
A		NEW RELEASE	AV		N.O.	12-15-97
B		ADDED mm DIMENSIONS; .031 (0.80) WAS .024(0.61); .194 (4.93) WAS .177(4.50).	TC		N.O.	1-28-98
C		.104 ± .010(2.65 ± 0.25) WAS .090 ± .010(2.29 ± 0.25); REMOVED "REF" FROM DIMENSIONS ON SIDE VIEW; ADDED HOUSING CUTOUT AND REVISED SLOT ON INSERT.	TC	AV	NO	9-9-98
D	-----	ADD PACKAGING INFO	AV	DC	N.O.	2-25-99
E		REMOVED 3com PO LABEL FROM TRAY.	TC			

LED COLOR					
POS #	COLOR	POS #	COLOR	POS #	COLOR
1	-BLANK-	5	-BLANK-	9	-BLANK-
2	-BLANK-	6	-BLANK-	10	-BLANK-
3	YELLOW	7	YELLOW	11	-BLANK-
4	GREEN	8	GREEN	12	-BLANK-

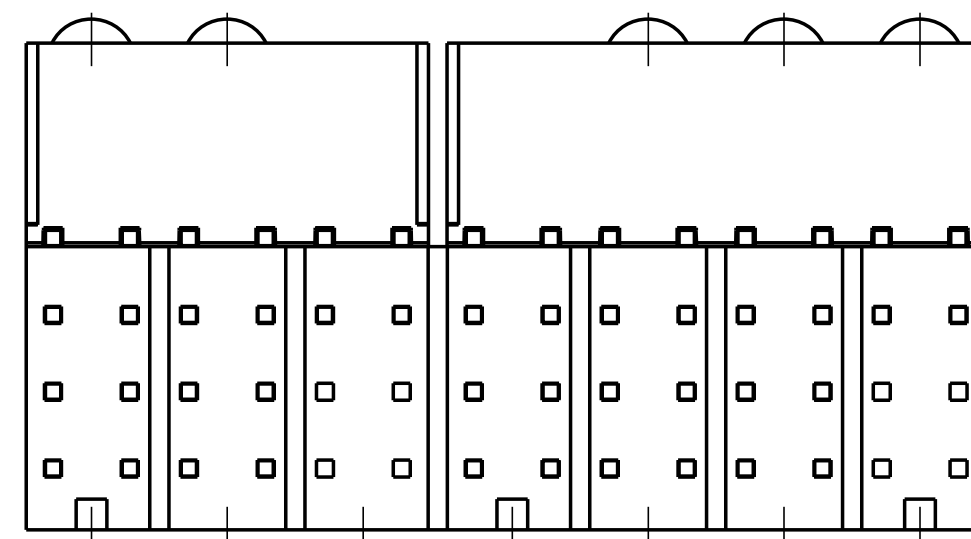
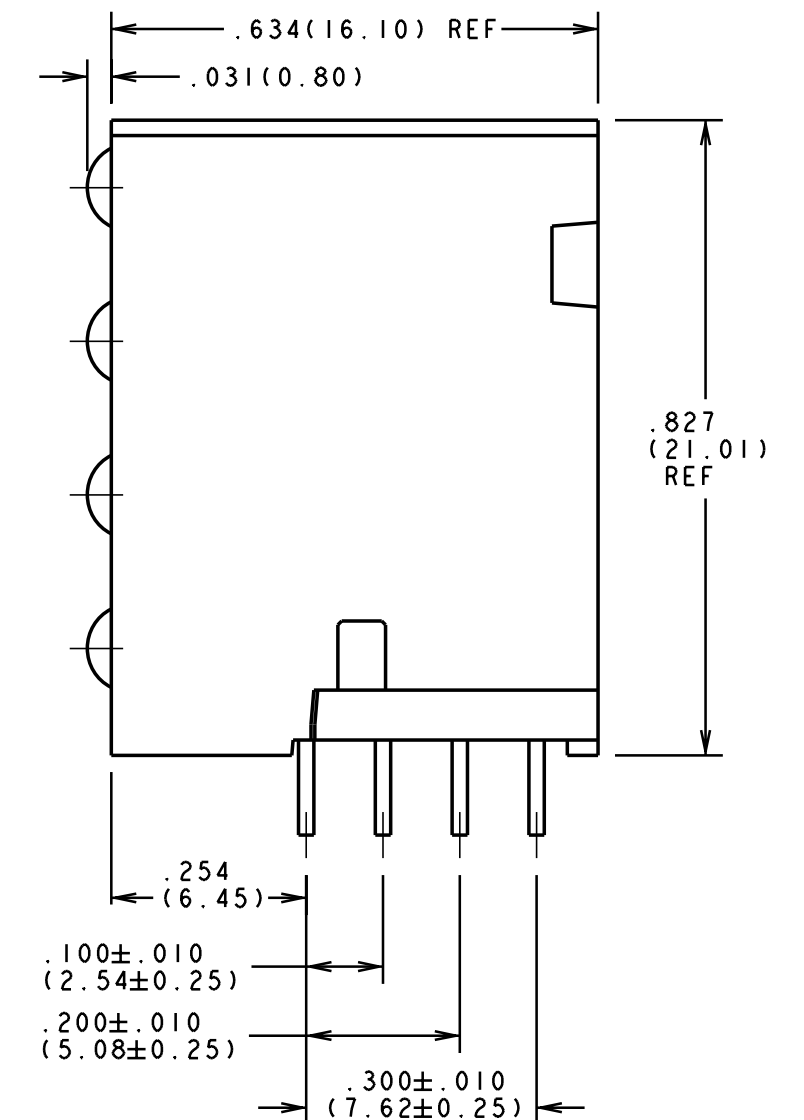
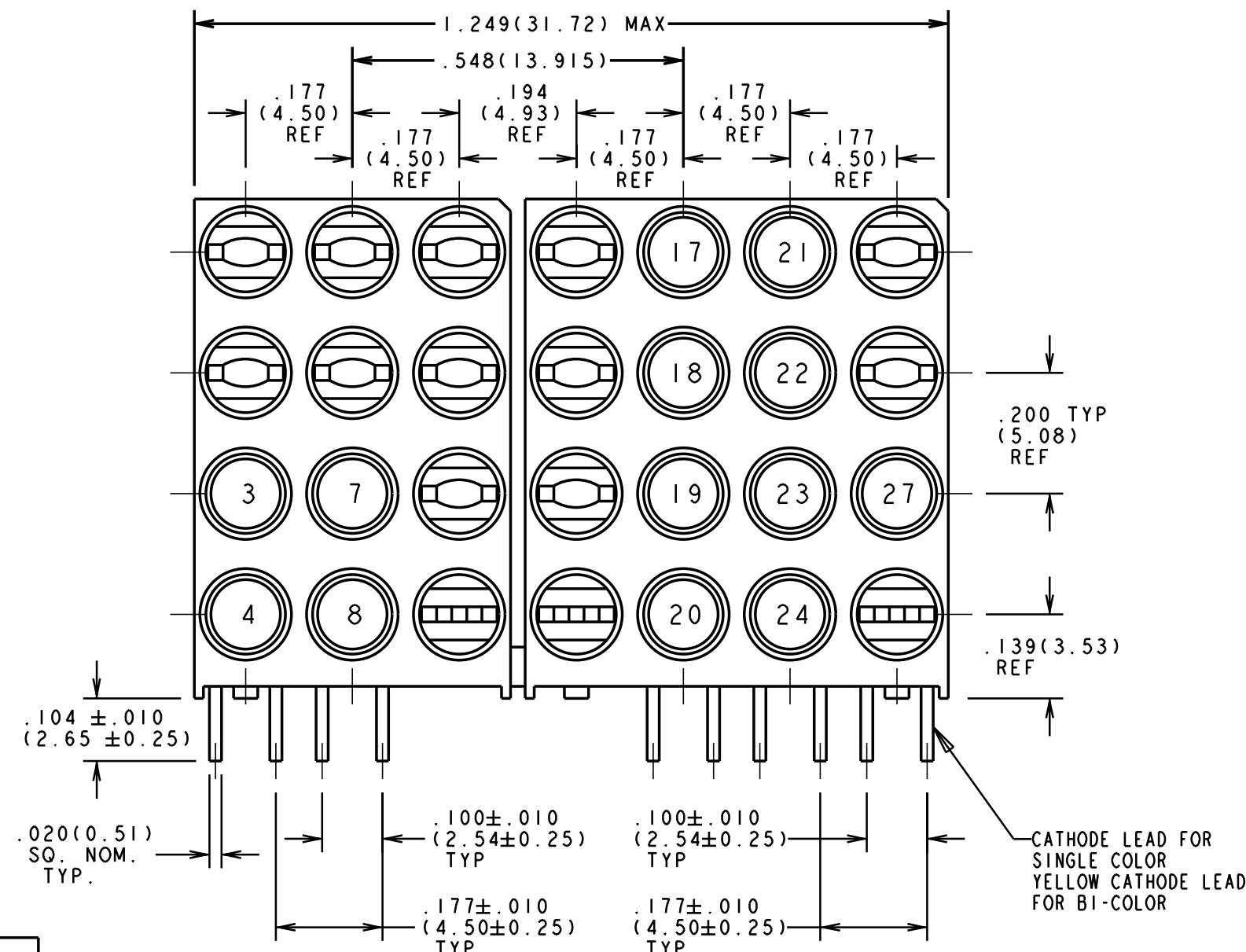
LED COLOR							
POS #	COLOR	POS #	COLOR	POS #	COLOR	POS #	COLOR
13	-BLANK-	17	GREEN	21	GREEN	25	-BLANK-
14	-BLANK-	18	GREEN	22	GREEN	26	-BLANK-
15	-BLANK-	19	GREEN	23	GREEN	27	YEL/GRN
16	-BLANK-	20	GREEN	24	GREEN	28	-BLANK-

- NOTES :
- 3-COM PART NUMBER = 7320-455-004 REF
 - ALL DIMENSIONS ARE IN INCHES (mm)
 - PACKAGING = BLOCKS PLACED IN CLEAR ANTISTATIC TRAY 45 BLOCKS PER TRAY
 - DIALIGHT PART NUMBER = 568-0020-801

GREEN LED SPEC					
OPERATING CHARACTERISTICS AT 25° C AMBIENT					
LED CHARACTERISTICS	MIN.	TYP.	MAX.	UNITS	TEST CONDITIONS
LUMINOUS INTENSITY	4.7	12.6		mcd	I _F = 10 mA
FORWARD VOLTAGE		2.1	2.8	V	I _F = 20 mA
PEAK EMISSION WAVELENGTH		565		nm	
REVERSE CURRENT			100	μA	@ V _R = 5 V
VIEWING ANGLE (2 Φ 1/2)		60		DEGREES	
CAPACITANCE		35		pF	V _R = 0 V, f = 1 MHz

YELLOW LED SPEC					
OPERATING CHARACTERISTICS AT 25° C AMBIENT					
LED CHARACTERISTICS	MIN.	TYP.	MAX.	UNITS	TEST CONDITIONS
LUMINOUS INTENSITY	7.4	10.0		mcd	I _F = 10 mA
FORWARD VOLTAGE		2.1	2.8	V	I _F = 20 mA
PEAK EMISSION WAVELENGTH		585		nm	
REVERSE CURRENT			100	μA	@ V _R = 5 V
VIEWING ANGLE (2 Φ 1/2)		60		DEGREES	
CAPACITANCE		15		pF	V _R = 0 V, f = 1 MHz

BI-COLOR LED SPEC						
OPERATING CHARACTERISTICS AT 25° C AMBIENT						
LED CHARACTERISTICS	COLOR	MIN.	TYP.	MAX.	UNITS	TEST CONDITIONS
LUMINOUS INTENSITY	GREEN YELLOW	2.5 2.5	6.3 4.3		mcd	I _F = 10 mA
FORWARD VOLTAGE	GREEN YELLOW		2.1	2.8	V	I _F = 20 mA
PEAK WAVELENGTH (λ _p)	GREEN YELLOW		565 585		nm	
DOMINANT WAVELENGTH (λ _d)	GREEN YELLOW (Y3) YELLOW (Y2)	585 583	569	589 587	nm	MEASURED ON EXELTRON 2001
VIEWING ANGLE (2 Φ 1/2)	GREEN YELLOW		80		DEGREES	
CAPACITANCE	GREEN YELLOW		35 15		pF	V _R = 0 V, f = 1 MHz



THIS DRAWING AND THE CONTENTS HEREIN ARE CONFIDENTIAL AND THE SOLE PROPERTY OF DIALIGHT. REPRODUCTION OF THIS DRAWING OR CONSTRUCTION OF ANY PARTS WITHIN THIS DRAWING ARE FORBIDDEN WITHOUT THE WRITTEN CONSENT OF DIALIGHT.		
SCALE 4:1	DRAWING NUMBER	REV
ALL DIM'S IN: INCHES	C-16320	E
TOLERANCES: UNLESS OTHERWISE SPECIFIED	TITLE (4x7) CBI BLOCK	
FRACTIONS (.XX): ±1/64	MATERIAL	
DECIMALS (.XXX): ±.020	Dialight	
DECIMALS (.XXX): ±.015	1913 ATLANTIC AVE. MANASQUAN, N.J. 08736	
ANGLES: ±1°	FSCM 83330	SHEET OF FAMILY TABLES:
FINISH:		