

Watchport®

USB ENVIRONMENTAL MONITORING APPLIANCES



Installation Guide

SensorModels:

Watchport/H

Watchport/P

Watchport/T

Watchport/W

Watchport/D

Watchport/A

CameraModels:

Watchport/VE

Watchport/V2

Watchport/V3



www.digi.com

Table of Contents

Table of Contents	1
Introduction.....	1
Installing Watchport Camera Drivers	2
DirectShow (DirectX) Drivers.....	2
TWAIN and AVI Drivers	3
Installing Watchport Sensor Drivers.....	4
Cabling Watchport.....	6
Watchport Camera Products	6
Watchport Sensor Products.....	6
Installing Watchport Manager	8
Updating Base Unit Firmware	8
Using the Watchport Sensor Interface	9
Watchport/A (Acceleration & Tilt Sensor).....	10
Watchport/H (Humidity & Temperature Sensor)	11
Watchport/P (Proximity Sensor).....	12
Watchport/D (Proximity & Distance Sensor).....	13
Watchport/T (Temperature Sensor)	14
Watchport/W (Water Detector).....	15
Using the Edgeport Utility Program	16
Regulatory and Other Information.....	22

Introduction

The Watchport® Series is the first line of plug-and-play USB devices for 24/7 environmental monitoring. Asset monitoring is a key issue in reducing total cost of ownership by pre-empting system failures, extending the life of equipment, and reducing downtime in mission-critical applications like branch server room management and equipment room monitoring. Camera components for surveillance may be paired with sensors for proximity, water, temperature, and humidity to create a made-to-order monitoring system. Customers may use their own software applications with Watchport devices or use the included Watchport Manager. Watchport Manager sends phone, email, or beeper alerts and enables easy device integration without additional software development.

Watchport products consist of the following parts:

- The sensing device

- A USB interface (as a separate base unit or as part of the device itself)

- Watchport Manager software

The Watchport products are divided into two categories:

Camera

301-9020-01 Watchport/VE USB Camera

301-9010-01 Watchport/V2 USB Camera

301-9010-02 Watchport/V3 USB Camera

Camera Accessories

- 301-9012-01 Watchport/V2 Bulk 20

- 301-9012-02 Watchport/V3 Bulk 20

- 301-9014-01 Watchport Close-Up Lens

- 301-9015-01 Watchport Lens Package
Green: 3 mm Wide Angle, Red: 8 mm Close-Up, Blue: 12 mm Telephoto

- 301-9018-01 Watchport Wall Mount

- 301-9019-01 Watchport Clamp Mount

Sensors

301-1141-01 Watchport/H Humidity & Temperature Sensor

301-1143-01 Watchport/P Proximity Sensor

301-1144-01 Watchport/T Temperature Sensor

301-1145-01 Watchport/W Water Detector

301-1146-01 Watchport/D Proximity & Distance Sensor

301-1147-01 Watchport/A Acceleration & Tilt Sensor

Installing Watchport Camera Drivers

NOTE: If any Watchport Camera drivers are already installed on your system, you **MUST** uninstall them before continuing with these installation instructions. Also, the two sets of drivers (one for DirectShow and one for TWAIN and AVI) are mutually exclusive; you may install one **OR** the other, but not both.

If you are using DirectShow (DirectX), follow the instructions below. If you are using TWAIN or AVI, go to “TWAIN and AVI Drivers” on page 3.

DirectShow (DirectX) Drivers

You may want to check that you have the most recent version of DirectX before continuing with these installation instructions.

ForWindowsXP,2000,and2003ServerUsers

Drivers for DirectShow (DirectX) are on the “DirectShow Driver and Manual” CD. Note that you must be logged into an account with administrator privileges.

- 1) Insert the “DirectShow Driver and Manual” CD version 2.90 or above into your CD-ROM drive.
- 2) Plug in the Watchport Camera. (See “Cabling Watchport” on page 6).
- 3) When the Found New Hardware screen for the Watchport USB Loader software appears, choose option a) or option b):
 - a) Specify the location of the drivers and click **Next**.
 - b) Install from a list or specific location and click **Next**. The subsequent screen allows you to search removable media, type the location path, or browse to locate the drivers on your CD-ROM drive. Use one of these methods to locate the drivers and click **Next**.
- 4) Windows may warn that the software “has not passed Windows Logo testing.” Click **Continue Anyway** to continue with driver installation.
- 5) When the Found New Hardware Wizard finishes installing the Watchport USB Loader software, click **Finish**.
- 6) Wait for the second Found New Hardware screen (for the Watchport Camera software) to appear. When it does, again choose option a) or option b) as described in step 3.
- 7) Windows may warn that the software “has not passed Windows Logo testing.” Click **Continue Anyway** to continue with driver installation.
- 8) When the Found New Hardware Wizard finishes installing the Watchport USB Camera software, click **Finish**.

Your Watchport Camera is now ready to use. To verify installation you may start the Watchport Viewer (found in **Start/Programs/Watchport imaging/Watchport Viewer**).

The Watchport Viewer defaults to activating the camera (in **Options/Preview**). You can open a Properties screen through **Options/Video Capture Filter** and adjust brightness, sharpness, contrast, color, compression, etc.

TWAIN and AVI Drivers

For Windows XP, 2000, and 2003 Server Users

Drivers for TWAIN/AVI are on the “TWAIN/AVI Driver and Manual” CD. Note that you must be logged into an account with administrator privileges.

- 1) Insert the “TWAIN/AVI Driver and Manual” CD version 2.60 or above into your CD-ROM drive.
- 2) Plug in the Watchport Camera. (See “Cabling Watchport” on page 6).
- 3) When the Found New Hardware screen for the Watchport USB Loader software appears, choose option a) or option b):
 - a) Specify the location of the drivers and click **Next**.
 - b) Install from a list or specific location and click **Next**. The subsequent screen allows you to search removable media, type the location path, or browse to locate the drivers on your CD-ROM drive. Use one of these methods to locate the drivers and click **Next**.
- 4) Windows may warn that the software “has not passed Windows Logo testing.” Click **Continue Anyway** to continue with driver installation.
- 5) When the Found New Hardware Wizard finishes installing the Watchport USB Loader software, click **Finish**.
- 6) Wait for the second Found New Hardware screen (for the Watchport Camera software) to appear. When it does, again choose option a) or option b) as described in step 3.
- 7) Windows may warn that the software “has not passed Windows Logo testing.” Click **Continue Anyway** to continue with driver installation.
- 8) When the Found New Hardware Wizard finishes installing the Watchport USB Camera software, click **Finish**.

Your Watchport Camera is now ready. To verify installation you may use the VC3Viewer (found in **Start/Programs/Watchport imaging/VC3Viewer**). The camera is automatically activated. In the **Controls** menu you can select **Camera Control Panel** to adjust image size, color format, brightness, sharpness, quality, etc.

Installing Watchport Sensor Drivers

ForWindowsXPand2003ServerUsers

You must be logged into an account with administrator privileges. If your computer is connected to the internet, the latest Microsoft certified drivers will be automatically downloaded from the Microsoft driver update server.

- 1) Plug in the Base Unit. (See “Cabling Watchport” on page 6.)
- 2) Insert the “Edgeport Driver” CD version 4.20 or above into your CD-ROM drive.
- 3) When the Found New Hardware Wizard appears click **Next**, and the drivers will be automatically installed from the CD. Installation is complete when no more dialogs appear.

ForWindows2000Users

You must be logged into an account with administrator privileges.

- 1) Plug in the Base Unit. (See “Cabling Watchport” on page 6.)
- 2) Insert the “Edgeport Driver” CD version 4.20 or above into your CD-ROM drive.
- 3) When the Found New Hardware Wizard appears, select **Install from a list or specific location (Advanced)** and click **Next**.
- 4) Select **Search for a suitable driver for my device** and click **Next**.
- 5) Select **Specify a location** and click **Next**.
- 6) Type in <CD drive letter>:\Win2k and click **OK**.
- 7) Confirm that Windows is pointing to <CD drive letter>:\Win2k. Then click **Next**.
- 8) Note: Drivers installed from the CD have received “Designed for Windows 2000” certification. Drivers downloaded from our web site may be pending certification. If so, Windows 2000 will display a warning: Digital Signature Not Found. Click **Yes** to continue with driver installation. If you click **No** you will need to contact Digi Technical Support before installing your Watchport Sensor.
- 9) Click **Finish** to complete the driver installation.

ForWindows98,andMeUsers

- 1) Insert the “Edgeport Driver” CD version 4.20 or above into your CD-ROM drive.
- 2) Plug in the Base Unit. (See “Cabling Watchport” on page 6.)
- 3) After connecting the USB cable, the Add New Hardware Wizard appears. Click **Next**.
- 4) Select **Search for the best driver for your device** and click **Next**.
- 5) Select **Specify a location** and type in <CD drive letter>:\Win98. Then click **Next**.
- 6) Confirm that Windows is pointing to <CD drive letter>:\Win98. Click **Next**. Windows will then copy over the driver files.
- 7) Click **Finish** to complete the driver installation.

For Windows NT 4.0 Users

Because Microsoft does not support USB in NT4.0, Digi International supplies a set of USB drivers that will be installed along with the necessary Edgeport drivers. You must be logged into an account that has administrative privileges before installing the drivers.

To install the USB stack and Edgeport drivers:

- 1) Insert the “Edgeport Driver” CD version 4.20 or above into your CD-ROM drive.
- 2) When the welcome dialog appears, click the **Install Driver** button.

Once the driver installation program has begun, follow the on screen instructions.

- 3a) *If you are installing drivers for the first time:* An Information dialog informs you that the installation was successful. After clicking **OK**, the installation is complete.
- 3b) *If you are replacing existing Edgeport drivers:* Follow the on-screen instructions.
Note that, before beginning the installation of the drivers, all applications with open ports must be closed and all USB devices unplugged. If you close all the applications and unplug all the USB devices, then you will not need to reboot for the new drivers to take effect immediately. If any applications are left open or USB devices plugged in, you may choose to abort the installation or to continue and be required to reboot before the upgrade can take effect.

Note that because Windows NT 4.0 is *not* Plug-and-Play, you will *not* see a pop-up dialog box indicating that new hardware has been found. You may verify correct installation with the Edgeport Utility (see page 16) or the USB Status Utility (as described below).

The USB Status Utility (Viewer) can be accessed by clicking the USB icon in your system tray or by clicking on **Start / Programs / Digi USB / Edgeport Configuration Utility**. This utility lists all the USB devices installed on your PC and provides other relevant information for each device. You may also use this utility to create a log file.

Cabling Watchport



USB Type A Connector



USB Type B Connector

Watchport Camera Products

To connect a Watchport Camera, plug the Type A (flat) end of the USB cable into the USB port located in the back of your PC or into an available USB port on a standard hub or into a Digi Hubport. Plug the Type B (rounded) end of the USB cable into the Watchport.

The Watchport/VE Camera is additionally connected using an RCA video cable or an S-Video cable. When using an RCA video cable, match the composite video (yellow), right audio (red), and left audio (white) connectors with the corresponding receptacles on your video device. When using a standard S-Video cable, match the S-Video (black), right audio (red), and left audio (white) with the corresponding S-Video and audio connectors on your video device.

The software default is “Composite Video.” To select S-Video, open the Watchport Viewer (**Start / Programs / Watchport Imaging / Watchport Viewer**). While in the Watchport Viewer, go to **View / Options / Video Capture Filter** and select the **Advanced** tab. In the **Video Source** box, select **S-Video** and click **OK**.

Watchport Sensor Products

The sensing device of the Watchport Sensor Products comes with an RJ45 terminated cable. Plug the RJ45 connector into the corresponding jack on the Watchport base unit.

Plug the Type A (flat) end of the USB cable into the USB port located in the back of your PC or into an available USB port on a standard hub or into a Digi Hubport. Plug the Type B (rounded) end of the USB cable into the Watchport base unit.

Extending the Cable

Watchport Sensor products, which are shipped with a 6 foot cable, can be extended using a CAT-5 twisted pair cable up to 500 feet for the Watchport/A, Watchport/H, Watchport/P, Watchport/D, and Watchport/T and up to 1000 feet for the Watchport/W. Contact Digi International if you need to extend it beyond these limits.

To extend your cable, we recommend that you use CAT-5 twisted pair cable and follow the wiring in Table 1. Your color assignment may vary and you will need to adjust the tables accordingly. Connect only the actively used signals as indicated in the picture to the right.

Proximity Sensor		All Other Sensors	
<u>RJ45</u>	<u>Wire Color</u>	<u>RJ45</u>	<u>Wire Color</u>
3	Black	3	Yellow
6	Blue	4	Green
7	Red	5	Black
		8	Grey

Wiring Table 1: Extending the Cable



Base unit, RJ45 connector, CAT-5 twisted pair cable

Shortening the Cable

If you need to shorten the cable, cut off the RJ45 connector and crimp a new connector at the end following the wiring in Table 2 (for all sensors).

<u>RJ45</u>	<u>Wire Color</u>	<u>RJ45</u>	<u>Wire Color</u>
1	White	5	Black
2	Brown	6	Blue
3	Yellow	7	Red
4	Green	8	Grey

Wiring Table 2: Shortening the Cable

Installing Watchport Manager

The Watchport Manager allows you to monitor your Watchport Camera and Sensor readings. To install the Watchport Manager:

1. Use the browser to locate the Watchport Manager folder located on the Edgeport CD and then double-click on **400002560.exe**.
2. Click **OK**.
3. Click on the large button to install Watchport Manager to the specified directory.
4. Click **Continue** to add items to the Watchport Manager program group.
5. Wait while files are copied and the system is updated. If prompted to keep newer existing files while installing, click **Yes**.
6. Click **OK** to complete installation.

You can open the Watchport Manager from the **Start/Programs** menu.

Updating Base Unit Firmware

This section applies to Watchport Sensor base units only (not Watchport Camera products).

1. Connect the Watchport base unit to your PC. Refer to “Cabling Watchport” on page 6 for information on connecting your Watchport base unit.
2. Open the Edgeport configuration utility program, found in the **Start/Programs** menu.
3. In the General tab, click on **Update**.
4. The **Open** button allows you to browse for the Watchport firmware (*.rom). The Edgeport Utility program can detect if the firmware is the same version, an older version, or for a different sensor.
5. After clicking **Update**, you will always be asked to confirm that you want to update your firmware. **NOTE: Do NOT disconnect your Watchport until the update is complete!**
6. After clicking **OK**, the update is complete.

See “The Edgeport Utility Program” on page 16 for more information about using this feature.

Using the Watchport Sensor Interface

The Watchport line of USB attached sensor products present themselves to a user application by way of a virtual serial port. This serial port is named as all standard serial ports in the form of COMx where x is a number between 1 and 255. The number assignment can be configured using the Edgeport configuration utility. (Refer to “The Edgeport Utility Program” on page 16.)

There are two basic types of sensing devices. The first type uses an ASCII command interface: Watchport/H and Watchport/T. The second type uses an RS-232 modem signal interface: Watchport/P and Watchport/W. The serial port can be opened with any serial parameters. Some sensors can be operated in either mode: Watchport/A and Watchport/D.

The first type of sensing devices uses ASCII commands. All ASCII commands sent to the sensing device must be terminated with a carriage return character <CR>. Multiple commands may be grouped together. For example, TCTF<CR> would cause Celsius temperature followed by Fahrenheit temperature to be returned in the response.

The format of the response sent from the Watchport sensor to the application is an ASCII printable character string terminated by a <CR>. For example, sending the command TF<CR> generates a single response string such as +72.0000F<CR> and sending a grouped command such as TCTF<CR> generates two responses such as +22.2200C<CR> followed by +72.0000F<CR>.

Other response strings generated by the Watchport sensor include Invalid Command<CR> or Sensor Error<CR>.

The second type of sensing device uses the modem signals: DSR (Data Set Ready), DCD (Data Carrier Detect), or CTS (Clear To Send) to inform the application of the status of the sensor.

The following sections describe each sensor and its command or signal interface.

Additional information is available at www.digi.com and Digi International’s technical support.

Watchport/A (Acceleration & Tilt Sensor)

The Watchport/A can be programmed to use either an RS-232 modem signal interface or an ASCII command interface. In its ASCII command mode, the sensor reports the current X-axis and Y-axis acceleration vectors relative to its 'neutral' position. In its modem signal mode, the sensor acts as a 'tilt' detector; that is, if the sensor is bumped from its 'neutral' position, it will raise (and then lower) its DSR signal.

Watchport/A Commands

Command	Description	Return Value
?<CR>	Tells about the command set available for this Watchport.	as described in this section
I<CR>	Tells what kind of Watchport is connected.	Watchport/A<CR>
C<CR>	Calibrates the sensor.	OK<CR>
A<CR>	Reflects the current acceleration.	+/-n.nngX +/-m.mmgy<CR>
U<CR>	Reads the raw axis values. These are the values that would be read if the C command were never executed.	+/-n.nngX +/-m.mmgy<CR>
E<CR>	Switches to modem signal mode. Until any other keystroke, the sensor uses DSR to signal 'tilt.'	OK<CR>
Mn<CR>	Adjusts sensitivity. M is followed by a single digit: 1 (most sensitive) through 9 (least sensitive).	OK<CR>

Note that for the return values of commands A and U, +/- means the value will be either positive or negative, n.nn and m.mm represent a number to the hundredth decimal, g stands for gravitational value, and X for the x axis and Y for the y axis.

For starting in either mode:

Step 1: Mount the sensor at its 'neutral' position.

Step 2: Calibrate sensor to establish its 'neutral' position.

C<CR>	Calibrates the sensor.	OK<CR>
-------	------------------------	--------

Step 3: Verify correct calibration.

A<CR>	Use to verify calibration. The response should be very close to 0 for both axes.	+0.00gX +0.00gY<CR>
-------	--	---------------------

Now the sensor can either be left in ASCII mode or the E<CR> command can be sent to switch it to modem signal mode.

Watchport/H (Humidity & Temperature Sensor)

The Watchport/H uses an ASCII command interface. Its operating range is -40C to +85C. For best results, avoid exposure to bright light.

Watchport/H Commands

Command	Description	Return Value
?<CR>	Tells about the command set available for this Watchport.	as described in this section
I<CR>	Tells what kind of Watchport is connected.	Watchport/H<CR>
H<CR>	Gives the percentage relative humidity.	38%<CR>
T<CR>	Gives temperature in Celsius.	+22.2500C<CR>
TC<CR>	Also gives temperature in Celsius.	+22.2500C<CR>
TF<CR>	Gives temperature in Fahrenheit.	+72.0000F<CR>
TF+<CR>	Repeats the TF command every 3-4 seconds until the next keystroke. Appending + also works with the TC and H commands	+72.0000F<CR>
L4<CR>	Adjusts the slew rate* of the data line. When “L” is followed by a numeric value, 1 through 8, Watchport responds with OK. Other values return Invalid Command. The default setting is 4. Adjust the parameter until the data transmission becomes error-free. The setting remains in effect until the Watchport is power-cycled.	OK

* Slew rate, as associated with 1-wire devices, determines the round-trip propagation time of a signal and depends on the number of devices connected and the length of the cable.

Watchport/P (Proximity Sensor)

The Watchport/P uses an RS-232 modem signal interface. The sensor acts as a 'proximity' detector; that is, if an object comes within range, the sensor will raise (and then lower) its DSR signal. The Watchport/P detects the presence of objects within a user-selectable range of 0.5 to 1.5 meters (1.64 to 4.9 feet) of the device and can give a reading as frequently as 100 times per second. If using the Watchport Manager, the sensor defaults to 1 read per 3 seconds.

Watchport/P Panel Description

To access the panel, pull tab out and lift up cover. Push firmly to close.

Red LED	This light indicates that the sensor is receiving some reflection of its signal but not enough to trigger the amber light. A persistent red light may mean that the sensor needs service. DSR is unaffected.
Amber LED	This light triggers the sensor. DSR goes high, so a message is sent.
PNP switch	This is the default setting. Watchport/P functions only with PNP selected.
NPN switch	This setting is not used.
L. ON switch	This is the default setting. DSR goes high when something comes within proximity of the sensor.
D. ON switch	This setting changes the sensor so that DSR goes high when something is NOT within proximity of the sensor.
SENS. knob	Adjust potentiometer with a small screwdriver. Adjusting higher (H) will increase sensitivity, lower (L) will lower sensitivity.

Watchport/P Commands

Command	Description	Return Value
?<CR>	Tells about the command set available for this Watchport.	as described in this section
I<CR>	Tells what kind of Watchport is connected.	Watchport/P<CR>

Watchport/D (Proximity & Distance Sensor)

The Watchport/D can be programmed to use either an RS-232 modem signal interface or an ASCII command interface. In its ASCII command mode, the sensor reports the distance to the object (if any). In its modem signal mode, the sensor acts as a 'proximity' detector; that is, if an object comes within range, the sensor will raise (and then lower) its DSR signal. The default mode is Proximity.

Watchport/D Commands

Command	Description	Return Value
?<CR>	Tells about the command set available for this Watchport.	as described in this section
I<CR>	Tells what kind of Watchport is connected.	Watchport/P<CR>

For the ASCII command mode:

D<CR>	Reflects the current distance. The valid range is from 20 cm to 150 cm. Otherwise, the sensor indicates no object.	nnncm<CR> No Object<CR>
-------	--	----------------------------

For the modem signal mode:

E<CR>	Enables monitor function. Until any other keystroke, the sensor uses DSR to signal 'proximity.'	OK<CR>
Mn<CR>	Adjusts sensitivity M is followed by a single digit: 1 (most sensitive) through 9 (least sensitive).	OK<CR>

Watchport/T (Temperature Sensor)

The Watchport/T uses an ASCII command interface. Its operating range is -55C to +125C.

Watchport/T Commands

Command	Description	Return Value
?<CR>	Tells about the command set available for this Watchport.	as described in this section
I<CR>	Tells what kind of Watchport is connected.	Watchport/T<CR>
T<CR>	Gives temperature in Celsius.	+22.2500C<CR>
TC<CR>	Also gives temperature in Celsius.	+22.2500C<CR>
TF<CR>	Gives temperature in Fahrenheit.	+72.0000F<CR>
TF+<CR>	Repeats the TF command every 3-4 seconds until the next keystroke. Appending + also works with the TC and T commands.	+72.0000F<CR>
L4<CR>	Adjusts the slew rate* of the data line. When L is followed by a numeric value, 1 through 8, Watchport responds with OK. Other values return Invalid Command. The default setting is 4. Adjust the parameter until the data transmission becomes error-free. The setting remains in effect until the Watchport is power-cycled.	OK Invalid Command

* Slew rate, as associated with 1-wire devices, determines the round-trip propagation time of a signal and depends on the number of devices connected and the length of the cable.

Watchport/W (Water Detector)

The Watchport/W uses an RS-232 modem signal interface and gives a binary output as frequently as 100 times per second. If using the Watchport Manager, the sensor is defaults to 1 read per 3 seconds.

DCD high indicates wet and DCD low indicates not wet.

The two prongs projecting from the bottom are for securing the detector to a soft surface such as pinewood or wallboard. The surface should not be conductive when it is dry, so it cannot be a metallic or other conductive material.

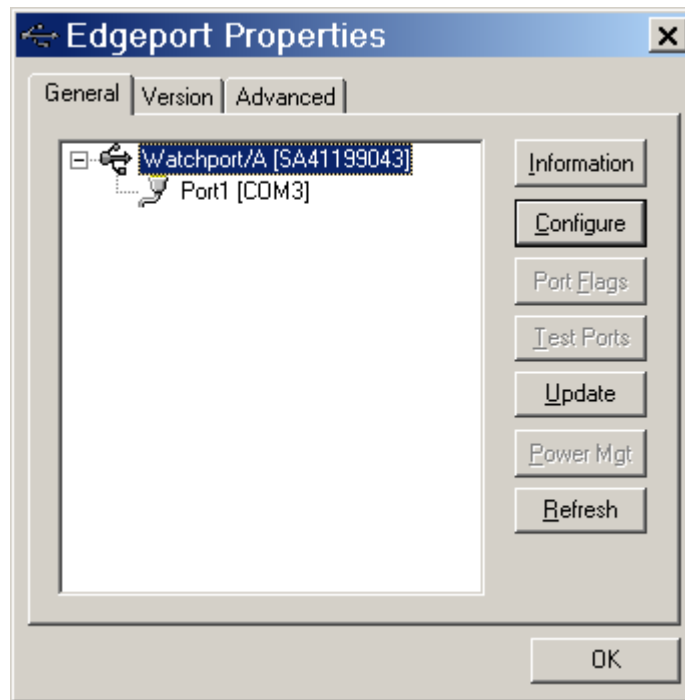
Using the Edgeport Utility Program

For all Windows Operating Systems

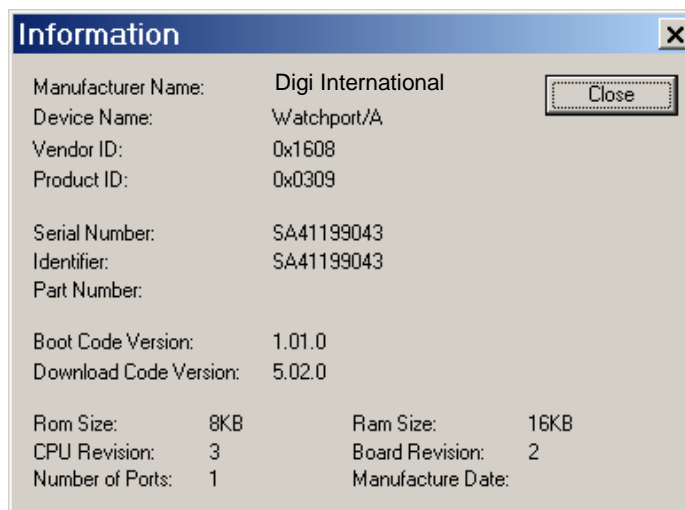
The Edgeport configuration utility program (**edgeport.exe**) allows you to manage the serial ports of your Watchport product. Note that with Windows NT you must have administrative privileges in order to change the COM port settings. For more information, see the Support section at www.digi.com.

General Tab

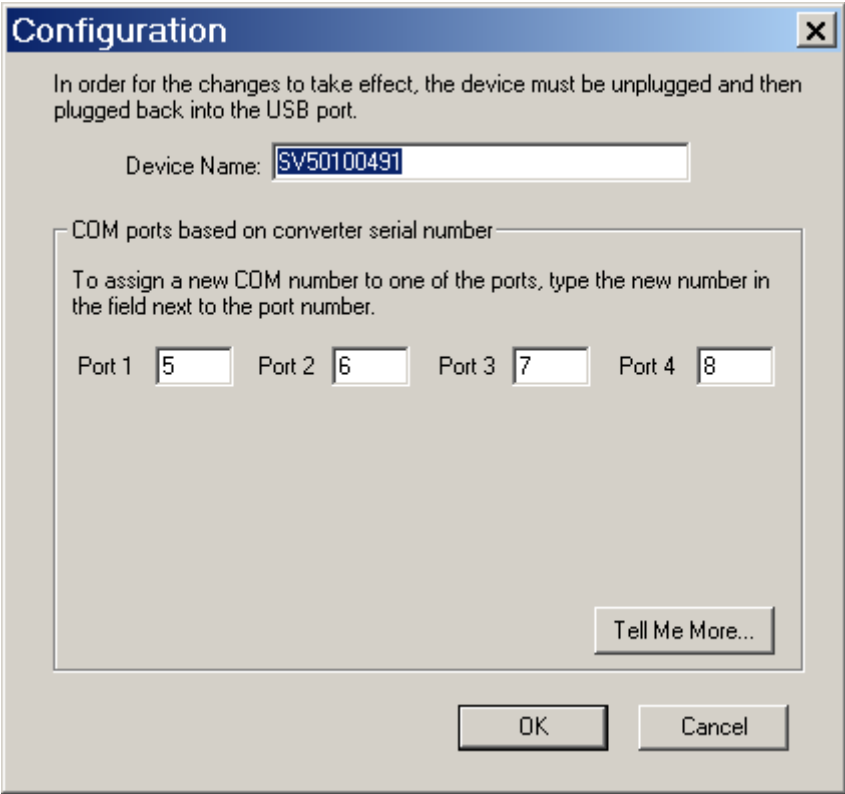
The **General** tab in this utility allows you to do the following:



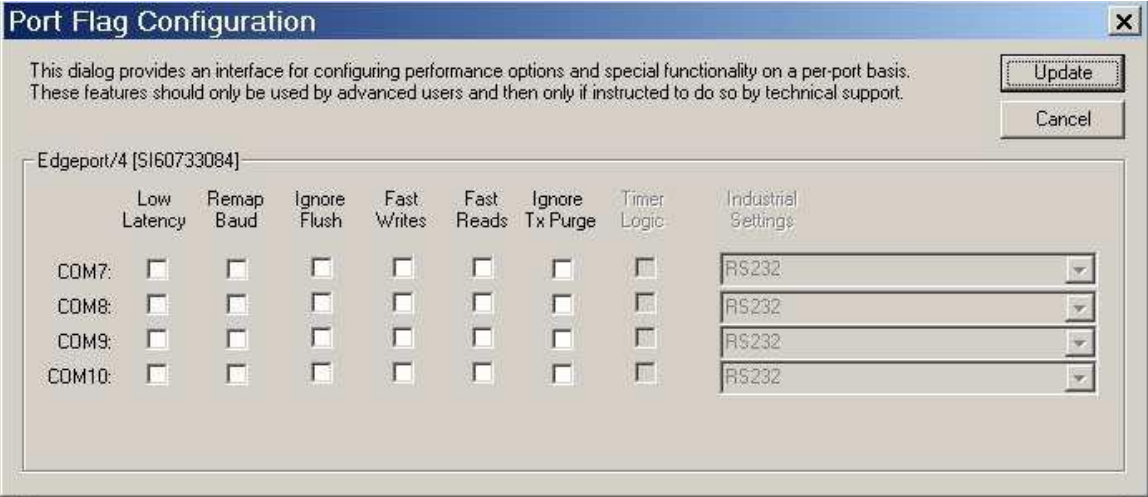
Information - Check the manufacturing information pertaining to your device.



Configure - Reassign the physical port on your device to any available Windows COM port number from 1 to 255 and give your device a user friendly Device Name. This capability is particularly helpful if you have more than one device.



Port Flags - Configure performance options and special functionality on a per-port basis.



Low Latency:

Normally the UART will interrupt when the receiver has been idle for 4 character times. (For example 4ms at 9600) As long as data is being received the UART will continue to buffer them until its internal FIFO is full (~56 bytes). This flag causes the Edgeport to poll the RX FIFO for received bytes. If any bytes are available they will be sent to the driver without any delay.

Remap Baud: (All operating systems)

Setting the baud rate to 1200 baud will result in 230400 baud

Ignore Flush: (Windows NT/2K/XP)

If an application sends IRP_MJ_FLUSH_BUFFERS it will be ignored.

Excerpt from Microsoft documentation:

Drivers of devices with internal caches for data and drivers that maintain internal buffers for data must handle this request.

When Sent

Receipt of a flush request indicates that the driver should flush the device's cache or its internal buffer, or, possibly, should discard the data in its internal buffer.

Operation

The driver transfers any data currently cached in the device or held in the driver's internal buffer(s) before completing the flush request. The driver of an input-only device that buffers data internally might simply discard the currently buffered device data before completing the flush IRP, depending on the nature of its device.

Fast Writes: (All operating systems)

When an application sends a write to the driver, by default the Edgeport driver will wait until all data has been transmitted out of the Edgeport device before completing the write. When the Fast Writes flag is set, we complete the write even if data is still buffered in the driver and the Edgeport device.

Fast Reads:

This flag is used when an application requires that a read complete immediately. In the read immediate case, the Edgeport driver will send a request to the Edgeport device asking for any buffered data to be sent up. This buffered data will be included when the read completes. If this flag is set, the driver will not query the Edgeport device for additional data.

Timer Logic: (Windows 9x only)

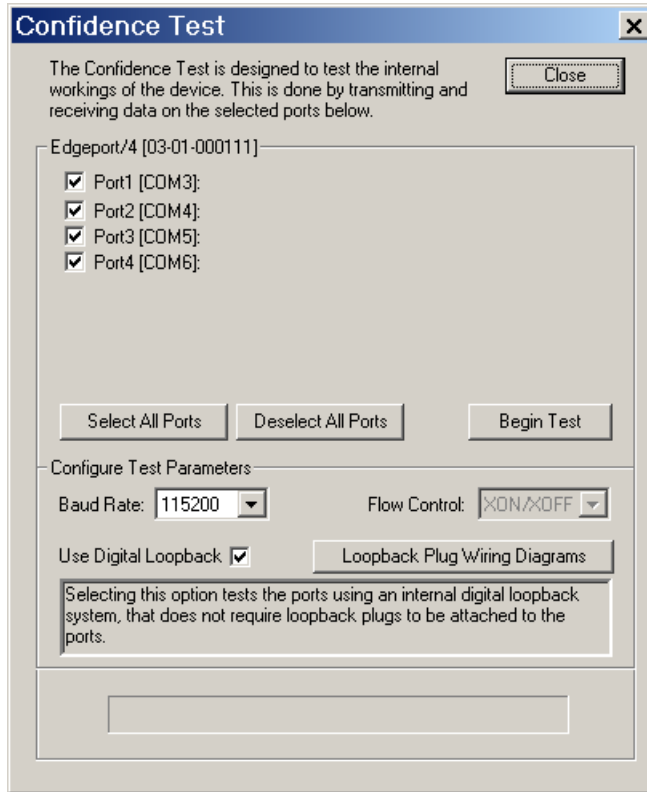
If application uses PortSetReadCallBack(), the notification routine will only be called when the number of bytes in the receive buffer is greater than the RX trigger. The Microsoft serial VxD also implements a timer that will trigger and call the notification routine if some amount of data is available in the RX buffer but no new data has been received for ~200ms (receiver is no longer active).

We do not enable this behavior by default because of the nature of Edgeport buffering. But if you set the flag we will complete the read when we detect ~200 ms no activity.

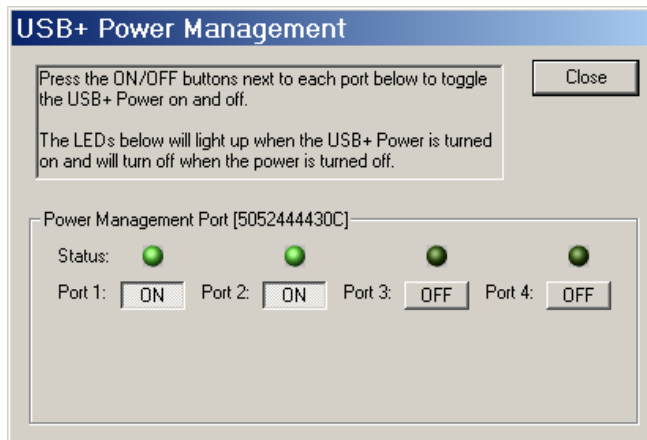
Here is a comment from the code:

If the receiver is active then do not complete this read. The problem is that the Edgeport buffers the RX bytes and we poll the driver. If we do not receive any bytes in 200ms we may report an erroneous event even if there are available bytes in the Edgeport device or driver.

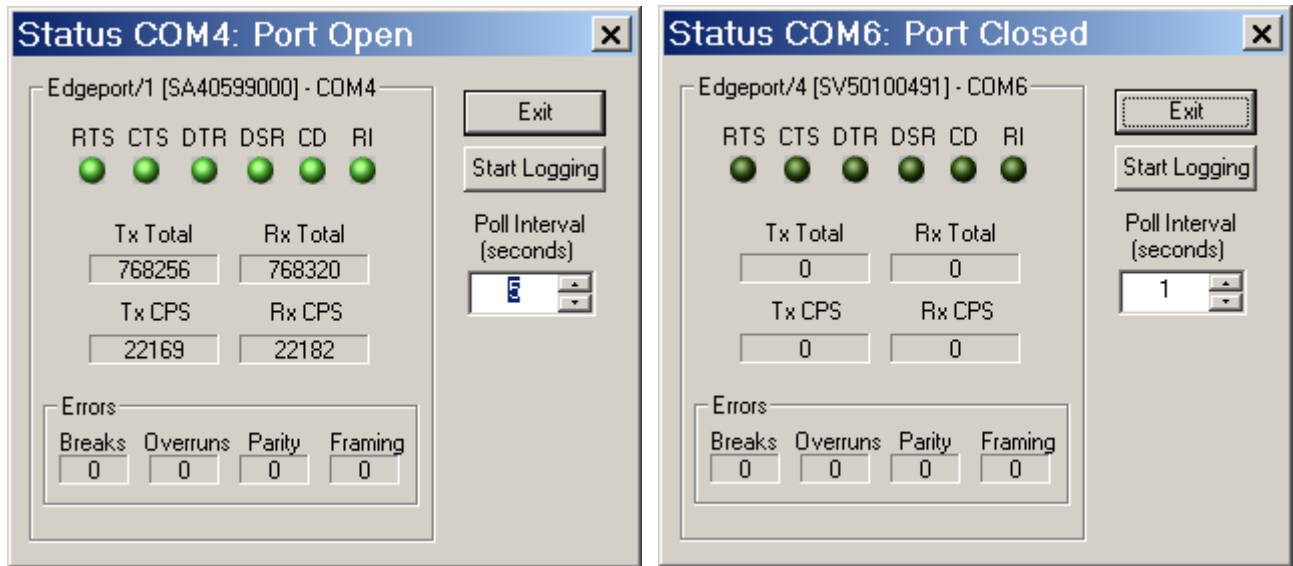
Test Ports - Perform a confidence test on the internal workings of the serial ports.



Power Management – Turn on and off the power for Hubports with USB PlusPower ports



Port Status – Provide the status of a selected (highlighted) serial port.



The Poll Interval is the number of seconds between updates of this window. This is also the number of seconds between each entry in the log file.

To create a log file, click the Start Logging button and enter a filename for the log file. This file will contain all of the information displayed in the Port Status window until the Stop Logging button is clicked.

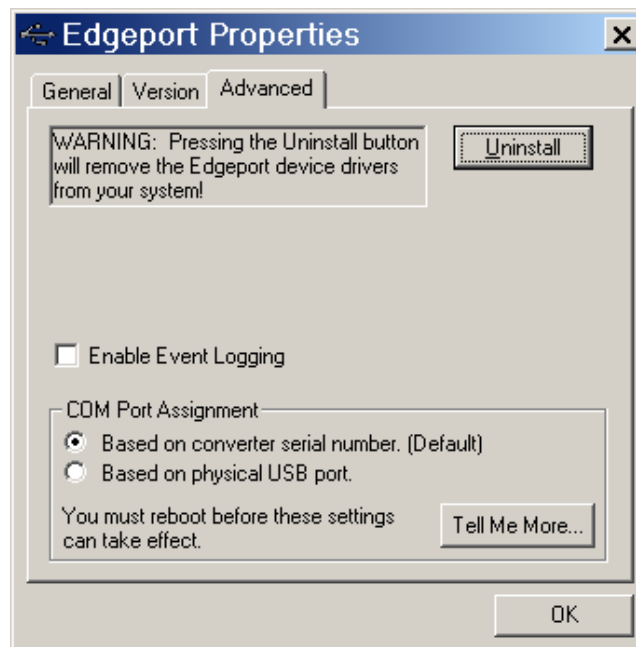
Refresh – Scan for ports. Note that NT 4.0 does not automatically scan.

Version Tab

The Version tab allows you to check the file information pertaining to the software.

Advanced Tab

The Advanced tab allows you to do the following:



Uninstall the drivers.

Enable Event Logging – Place event messages in system event log.

Configure how COM ports will be assigned.

The driver supports COM port number assignment in two ways:

1. Assign COM ports based on converter serial number.

This is the default setting. In this mode, the driver uses the serial number of each converter to uniquely identify it, and the COM port assignments for a given converter are based on its serial number. No matter which physical USB port a converter is plugged into, it will maintain its assigned COM port numbers.

2. Assign COM ports based on physical USB port.

In this mode, the driver identifies a converter based on the physical USB port it is plugged into. This effectively assigns COM port numbers to physical USB ports. No matter which converter is plugged into a given USB port, it will use the COM port numbers assigned to that USB port. This permits a converter to be replaced with a new unit, and, although the new unit has a different serial number, it will receive the same COM port assignments as the old unit because they were both plugged into the same USB port.

When using this mode, converters are identified not by their serial number, but by a 2-7 digit number that identifies which USB port it is plugged into.

After changing this setting, you will need to reboot before the change takes effect.

Regulatory and Other Information

© 2007 Digi, Digi International, the Digi logo, the Digi Connectware logo, USB Over IP, Watchport, Edgeport, Hubport, and Inside Out Networks and its logo are either trademarks or registered trademarks of Digi International, Inc. in the United States and/or other countries. All other trademarks are the property of their respective holders.

Information in this documentation is subject to change without notice and does not represent a commitment on the part of Digi International.

Digi International provides this document “as is,” without warranty of any kind, either expressed or implied, including, but not limited to, the particular purpose. Digi International may make improvements and/or changes to this documentation or to the product(s) and/or program(s) described in this documentation at any time.

Digi International assumes no responsibility of any errors, technical inaccuracies, or typographical errors that may appear in this documentation, nor liability for any damages arising out of its use. Changes are made periodically to the information herein; these changes may be incorporated in new editions of the publication.

For U.S. Government use:

Any provision of this document and associated computer programs to the U.S. Government is with “Restricted Rights.” Use, duplication, or disclosure by the government is subject to the restrictions set forth in, subparagraph (c) (1) (ii) of the Rights in Technical Data and Computer Software clause of DFARS 52.277-7013.

For non-U.S. Government use:

These programs are supplied under a license. They may be used, disclosed, and/or copied only as supplied under such license agreement. Any copy must contain the above copyright notice and restricted rights notice. Use, copying, and/or disclosure of the programs is strictly prohibited unless otherwise provided for in the license agreement.

Federal Communications Commission (FCC) Regulatory Information (USA only)

This equipment has been tested and found to comply with the limits for a Class B digital device, pursuant to Part 15 of the FCC Rules. These limits are designed to provide reasonable protection

against harmful interference in a residential installation. This equipment generates, uses, and can radiate radio frequency energy and, if not installed and used in accordance with the instructions, may cause harmful interference to radio communications. However, there is no guarantee that interference will not occur in a particular installation. If this equipment does cause harmful interference to radio or television reception, which can be determined by turning the equipment off and on, the user is encouraged to correct the interference by one or more of the following measures:

- Reorient or relocate the receiving antenna.
- Increase the separation between the equipment and the receiver.
- Connect the equipment into an outlet that is on a circuit different from the receiver.
- Consult the dealer or an experienced radio/TV technician for help.

Warning: The connection of a non-shielded interface cable to this equipment will invalidate the FCC Certification for this device.

FCC Regulation - Part 15 Declaration of Conformity (DoC)

This device complies with the requirements of the Code of Federal Regulations listed below:

FCC Title 47 CFR, Part 15 Class B for a digital device.

Operation is subject to the following two conditions:

This device may not cause harmful interference, and

This device must accept any interference received, including interference that may cause undesired operation.

Department of Communication (DOC) Notice (Canada only)

This Class B digital apparatus meets the requirements of the Canadian Interference-Causing Equipment Regulations.

Cet appareil numérique de la Classe B respecte toutes les exigences du Règlement sur le matériel brouiller du Canada.

Digi International

11001 Bren Road East
Minnetonka, MN 55343

digi.info@digi.com
www.digi.com

Corporate
Headquarters:
952-912-3444
877-912-3444
Fax: 952-912-4952

Digi Europe: +49-231-9747-0
Digi Hong Kong: +852-2833-1008
Digi North America: 877-912-3444

