


## Housing - HC-D 7-AML-26/GW/PA - 1772285

Please be informed that the data shown in this PDF Document is generated from our Online Catalog. Please find the complete data in the user's documentation. Our General Terms of Use for Downloads are valid (<http://download.phoenixcontact.com>)

HEAVYCON D7 panel mounting base, with single locking latch, height: 25.5 mm, angled, PA



### Key commercial data

Packing unit	1 pc
GTIN	 4 017918 036959
Weight per Piece (excluding packing)	24.88 GRM
Custom tariff number	85472000
Country of origin	Germany

### Technical data

#### Dimensions

Height	25.5 mm
Width	40.5 mm
Length	38 mm
Length of the assembly cutout	21.5 mm
Width of the assembly cutout	21.5 mm

#### Ambient conditions

Degree of protection of housing (IP)	IP54
	IP65 (with sealing screw)
Ambient temperature (operation)	-40 °C ... 125 °C

#### General

Note	For contact inserts HC-D7, D8, A3, A4, B5, HS2-D7
Design	D7

# Housing - HC-D 7-AML-26/GW/PA - 1772285

## Technical data

### General

Housing type	Panel mounting base
Locking type	With single locking latch
Screw connection	None
Housing material	Polyamide
Housing surface material	PA, light gray
Seal material	NBR
Material lock	Polyamide

## Classifications

### eCl@ss

eCl@ss 4.0	27140816
eCl@ss 4.1	27140816
eCl@ss 5.0	27143424
eCl@ss 5.1	27143424
eCl@ss 6.0	27143424
eCl@ss 7.0	27440209
eCl@ss 8.0	27440209

### ETIM

ETIM 2.0	EC000437
ETIM 3.0	EC000437
ETIM 4.0	EC000437
ETIM 5.0	EC000437

### UNSPSC

UNSPSC 6.01	31261502
UNSPSC 7.0901	31261502
UNSPSC 11	31261502
UNSPSC 12.01	31261502
UNSPSC 13.2	31261502

## Approvals

### Approvals

---

Approvals

GOST

# Housing - HC-D 7-AML-26/GW/PA - 1772285

## Approvals

Ex Approvals

Approvals submitted

## Approval details



## Accessories

Accessories

Mounting material

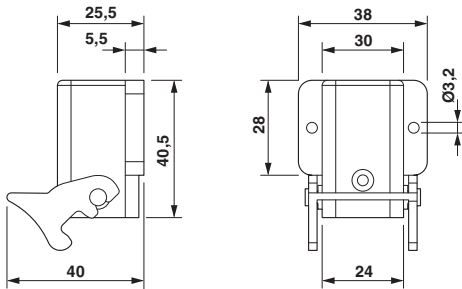
Sealing screw - HC-D 7-DS-IP65 - 1686229



Sealing screw, for IP65 protection

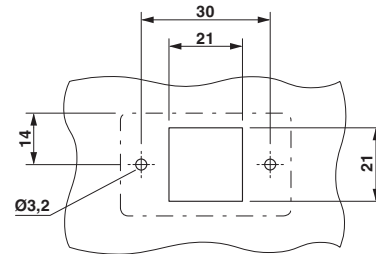
## Drawings

Dimensioned drawing



Dimensional drawing

Dimensioned drawing



Panel cutout

