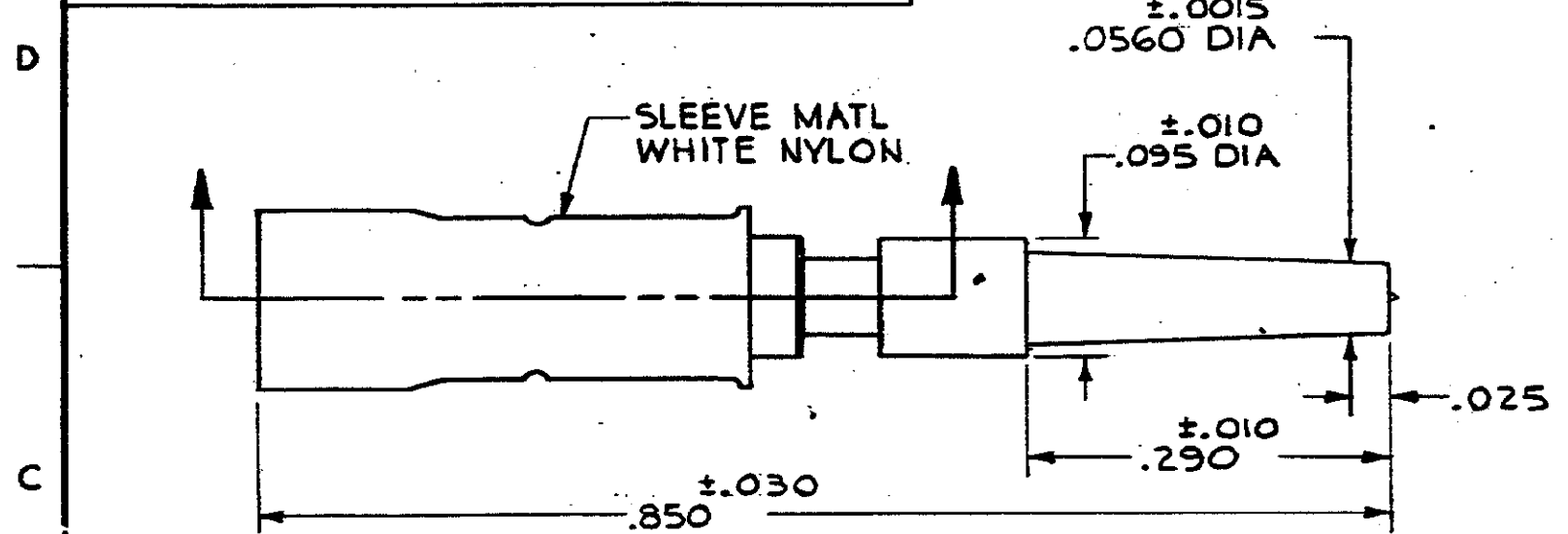


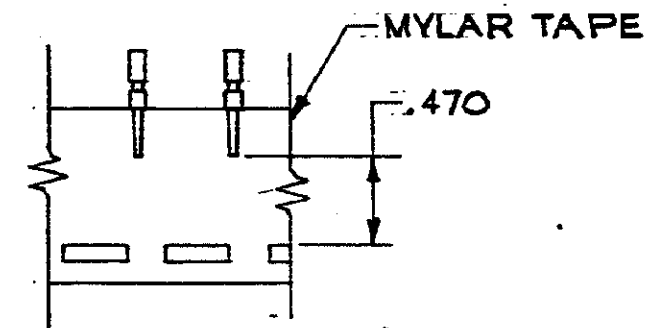
DRAWING MADE IN THIRD ANGLE PROJECTION

© COPYRIGHT 1973 BY AMP INCORPORATED, HARRISBURG, PA.  
ALL INTERNATIONAL RIGHTS RESERVED. AMP INCORPORATED PRODUCTS  
COVERED BY U. S. AND FOREIGN PATENTS AND/OR PATENTS PENDING.

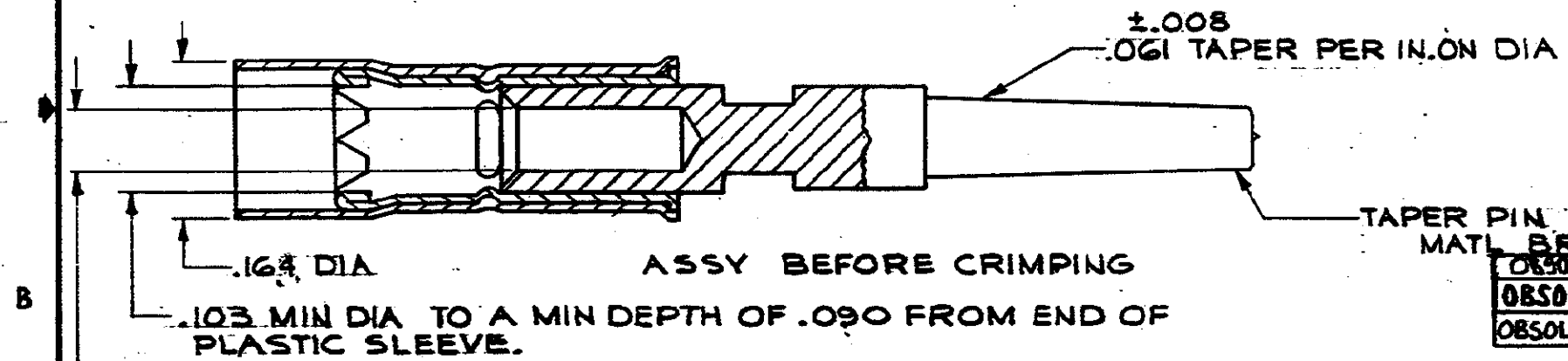
REVISIONS						
P	F	ZONE	LTR	DESCRIPTION	DATE	APPROVED
✓			E	REV; ECN DF-0488	10/10/73	JTC



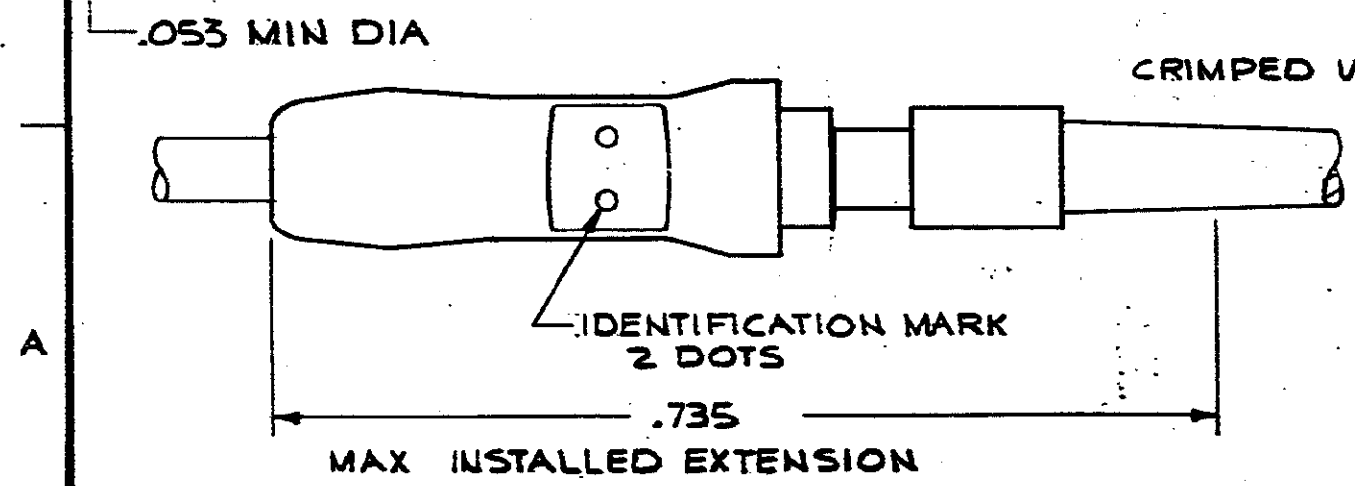
WIRE RANGE 20-18 AWG, INSULATION RANGE .060 - .100 DIA.



TAPE MOUNTED ASSY NO'S 42634-4, -5, -6  
SCALE 1:1



PART NO	DESCRIPTION
42634-6	AU.00003 OVER .00005 NI. ON TAPE
42634-5	SILVER.0002 THK ON TAPE
42634-4	BRIGHT TIN-LEAD, .0002 THK, ON TAPE
42634-3	GOLD.000030 OVER.000050 NI
42634-2	SILVER .0002 THK
42634-1	BRIGHT TIN-LEAD, .0002 THK



UNLESS OTHERWISE SPECIFIED DIMENSIONS ARE IN INCHES. TOLERANCES ON: DECIMALS ±.015 ANGLES ±	CONTRACT NO	AMP INCORPORATED Harrisburg, Pa.	
	DR J. PENICA 6-11-73	NAME TAPER PIN ASSY "53" SERIES P.I.D.G.	
	CHK Callahan 6-12-73	SIZE B	CODE IDENT NO 00779
	MATERIAL SEE CALLOUT	APPD [Signature] 6-12-73	NUMBER 42634
FINISH	DSGN APPD	SCALE 8:1	SHEET

AMP 1470-15 (1-73)

CUSTOMER DRAWING