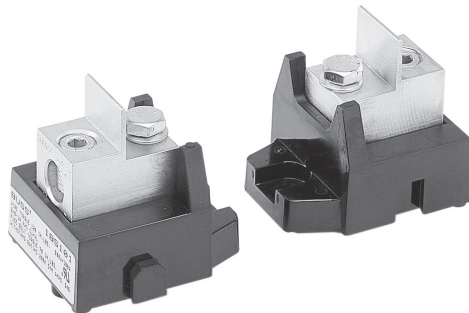


1BS101 modular fuse block, 600 V, 100 A

RoHS



Catalog number:

- 1BS101

Description:

Bussmann™ series modular fuse block for bolt-on high speed, Class J (70-100 A), 600 V Class T (70-100 A) and select BS88 fuses. See mounting dimensions table for applicable Bussmann series fuse catalog symbols. Dovetail interlock on each side of the base allows mounting multiple poles adjacent to one another.

Specifications:

Ratings

- Volts - 600 V
- Amps - 100 A
- Withstand rating - 200 kA RMS Sym. or the applied fuse interrupting rating, whichever is less

Agency information

- UL® Recognized, Guide IZLT2, File E14853
- CSA® Certified, Class 6225-01, File 47235
- CE
- RoHS compliant

Materials

- Base - molded black phenolic, 150°C
- Mounting bolts - zinc plated steel, 1/4-20 x 1/2"
- Washer - zinc plated steel 1/4" Belleville
- Connector: tin-plated aluminum

Conductors

- Connector accepts single 14 AWG - 2/0 copper or aluminum, solid or stranded wire

Torque

- Conductor setscrew - 13.6 N•m (120 Lb-in)
- Fuse mounting bolt - 7.9 N•m (70 Lb-in)

Dimensions: — mm/in

See Table 1 for A, B and C dimensions per fuse catalog symbol/ampacity.

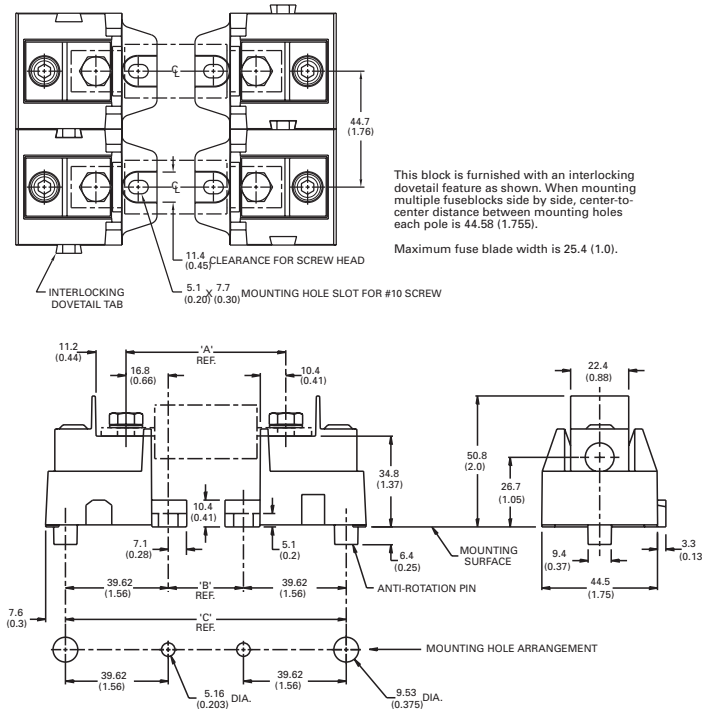


Table 1. Mounting dimensions — mm (in)

Bussmann series fuse catalog symbol	Amp range	A	B	C
FWA-_A	70-100	49.3 (1.94)	16.0 (0.63)	95.4 (3.75)
FWH-_B	35-60	58.9 (2.32)	25.6 (1.01)	104.9 (4.13)
FWH-_B	70-100	72.4 (2.85)	39.1 (1.54)	118.3 (4.66)
FWX-_A	35-60	59.4 (2.34)	26.1 (1.03)	105.4 (4.15)
FWX-_A	70-100	59.7 (2.35)	26.4 (1.04)	105.6 (4.16)
KAC_-	1-30	63.5 (2.50)	30.2 (1.19)	109.4 (4.31)
KAC_-	35-60	88.9 (3.50)	55.6 (2.19)	134.8 (5.31)
KAC_-	70-100	105.7 (4.16)	72.3 (2.85)	151.6 (5.97)
KBC_-	35-60	88.9 (3.50)	55.6 (2.19)	134.8 (5.31)
KBC_-	70-100	93.0 (3.66)	59.6 (2.35)	138.9 (5.47)
LPJ-_SP-_SP	70-100	95.5 (3.76)	62.2 (2.45)	141.4 (5.57)
JJS_-	70-100	59.9 (2.36)	26.6 (1.05)	105.9 (4.17)
JKS_-	70-100	96.3 (3.79)	62.9 (2.48)	142.2 (5.60)
_L14C	80-100	89.9 (3.54)	56.6 (2.23)	135.8 (5.35)
_L09C	80-100	112.0 (4.41)	78.7 (3.10)	157.9 (6.22)

The only controlled copy of this data sheet is the electronic read-only version located on the Eaton network drive. All other copies of this document are by definition uncontrolled. This bulletin is intended to clearly present comprehensive product data and provide technical information that will help the end user with design applications. Eaton reserves the right, without notice, to change design or construction of any products and to discontinue or limit distribution of any products. Eaton also reserves the right to change or update, without notice, any technical information contained in this bulletin. Once a product has been selected, it should be tested by the user in all possible applications.

Eaton
1000 Eaton Boulevard
Cleveland, OH 44122
Eaton.com

Bussmann Division
114 Old State Road
Ellisville, MO 63021
United States
Eaton.com/bussmannseries

© 2016 Eaton
All Rights Reserved
Printed in USA
Publication No. 1206 — SB98107
December 2016

Eaton and Bussmann are valuable trademarks of Eaton in the U.S. and other countries. You are not permitted to use the Eaton trademarks without prior written consent of Eaton.

CSA is a registered trademark of the Canadian Standards Group.
UL is a registered trademark of the Underwriters Laboratories, Inc.

For Eaton's Bussmann series product information, call **1-855-287-7626** or visit: **Eaton.com/bussmannseries**

Follow us on social media to get the latest product and support information.

